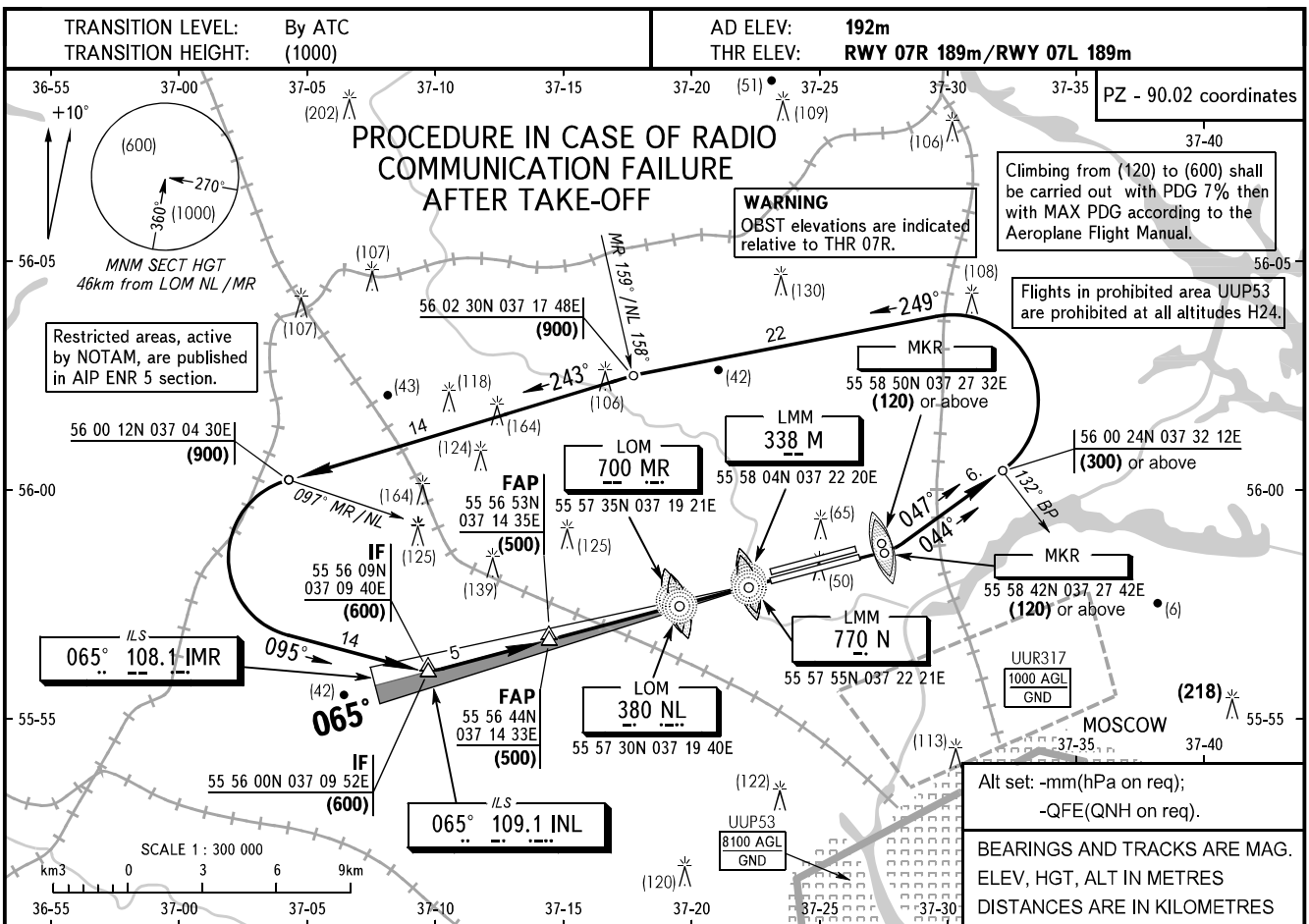


**INSTRUMENT  
APPROACH  
CHART - ICAO**

MOSCOW	APPROACH 2	127.200
SHEREMETYEVO RADAR		118.100
TOWER	RWY 07R/25L	120.700
	RWY 07L/25R	131.500

**MOSCOW, RUSSIA**  
SHEREMETYEVO  
ILS, PAR, 2 NDB RWY 07R/L



The profile of descent on final approach to RWY 07R see pages UUEE-97, 99

		OCA/H	A	B	C	D	E							
Straight-in Approach	2 NDB	CAT I	234(45)	238(49)	241(52)	246(57)	249(62)							
		CAT II	206(17)	209(20)	213(24)	218(29)	226(37)							
		PAR	257(68)	260(71)	263(74)	266(77)	271(83)							
		With FAF	293(104)	293(104)	293(104)	293(104)	293(104)							
		WO FAF	424(235)	424(235)	424(235)	424(235)	424(235)							
		CAT IIIA	DA(H) 204(15) RVR 200m											
GROUND SPEED			km/h	150	180	210	240	270	300	330	360	390	420	450
LOM-THR 3791m			min:sec	1.31	1.16	1.05	0.57	0.51	0.46	0.41	0.38	0.35	0.33	0.30
RATE OF DESCENT (Grad 5.2%)			m/s	2.2	2.6	3.1	3.5	3.9	4.3	4.8	5.2	5.6	6.0	6.5

The profile of descent on final approach to RWY 07L see pages UUEE-101, 103

		OCA/H	A	B	C	D	E							
Straight-in Approach	2 NDB	PAR	256(67)	259(70)	262(73)	265(76)	275(86)							
		CAT I	233(44)	236(47)	239(50)	243(54)	248(59)							
		With FAF	295(106)	295(106)	295(106)	295(106)	295(106)							
		WO FAF	424(235)	424(235)	424(235)	424(235)	424(235)							
GROUND SPEED			km/h	150	180	210	240	270	300	330	360	390	420	450
LOM-THR 4088m			min:sec	1.38	1.22	1.10	1.01	0.55	0.49	0.45	0.41	0.38	0.35	0.33
RATE OF DESCENT (Grad 5.2%)			m/s	2.2	2.6	3.1	3.5	3.9	4.3	4.8	5.2	5.6	6.0	6.5

CHANGE: OCA/H, ELEV