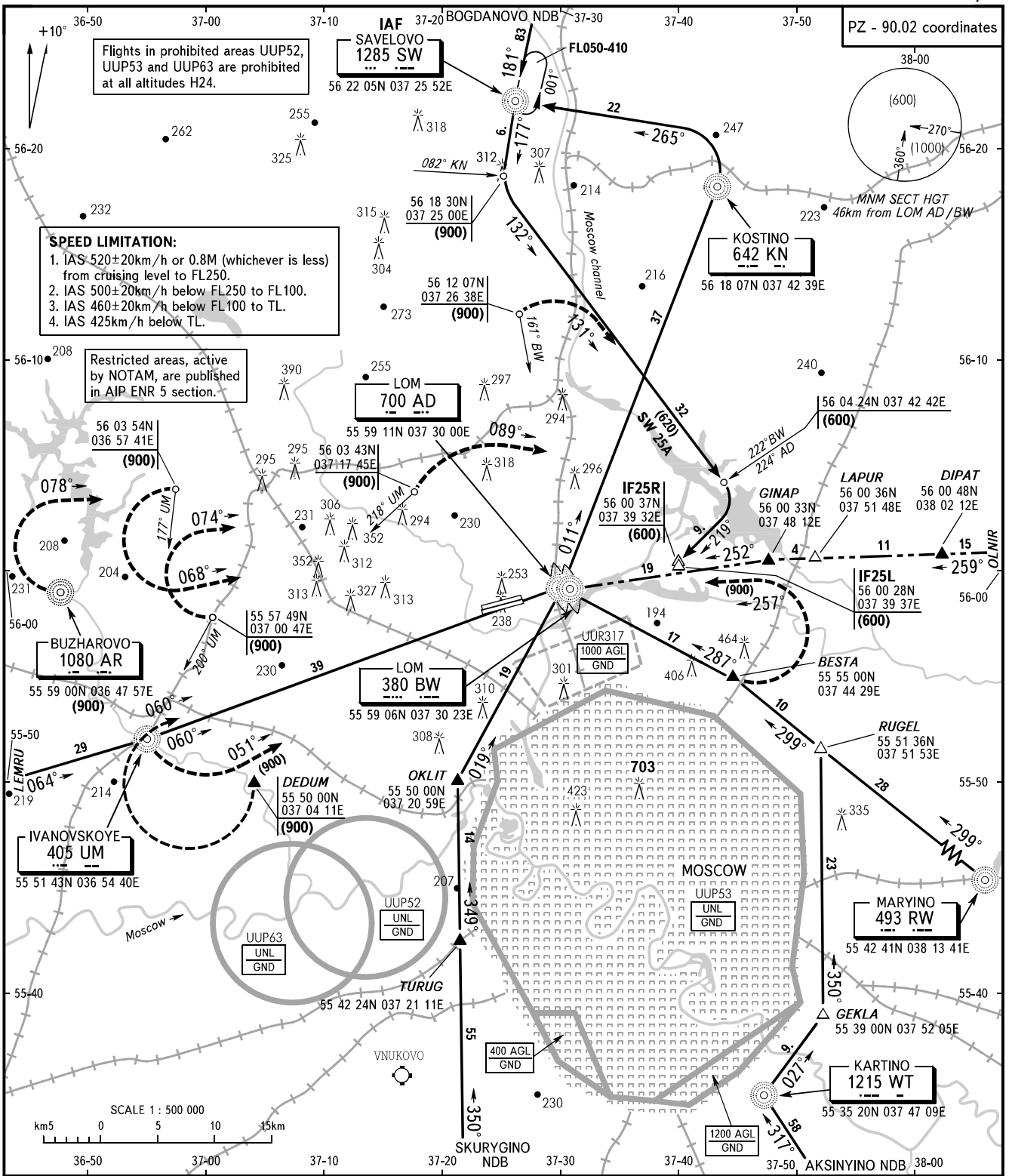


ARRIVAL ROUTES IN CASE OF RADIO COMMUNICATION FAILURE AFTER THE ENTRY INTO MOSCOW AREA

**MOSCOW, RUSSIA
SHEREMETYEVO
RWY 25L/R**

TRANSITION
LEVEL: **By ATC**



MOSCOW	APPROACH 1	127.2 119.450R
	APPROACH 2	122.7 119.450R
	APPROACH 3	128.0 119.450R
	APPROACH 4	123.4 119.450R
	APPROACH 7	131.2 119.450R
	APPROACH 8	129.8 119.450R
SHEREMETYEVO RADAR		118.1 119.450R

WARNING:

- In case of radio communication failure after the entry into Moscow TMA join the holding area over Savelovo NDB at the last flight level (height) assigned by the ATS unit, reach FL060, carry out the flight along the route for approach to land.
- In case of radio communication failure, during climbing to height (flight level) after take-off proceed to LOM (700 AD/380 BW) and carry out approach according to the approach procedure in case of radio communication failure immediately after take-off. In case of necessity for fuel use (fuel dumping) proceed to LOM (700 AD/380 BW), proceed to the holding area over Savelovo NDB climbing to FL070 to Kostino NDB, then to Savelovo NDB, after passing Savelovo NDB join the holding area. After fuel use (fuel dumping) reach FL060, carry out the flight along the route for approach to land.

BEARINGS AND TRACKS ARE MAGNETIC
ALTITUDES, HEIGHTS AND ELEVATIONS ARE IN METRES
DISTANCES ARE IN KILOMETRES

CHANGE: Holding area