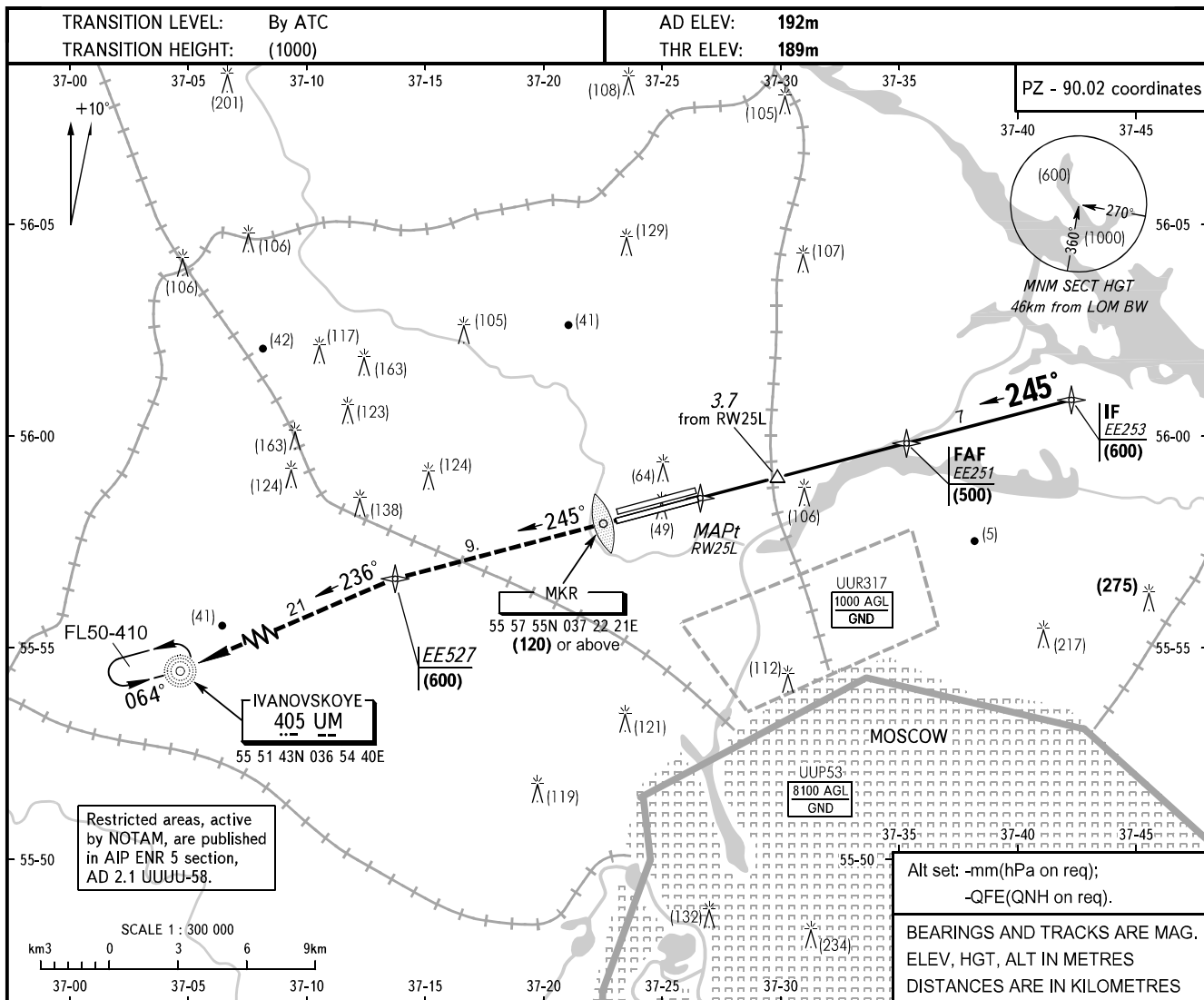


**INSTRUMENT
APPROACH
CHART - ICAO**

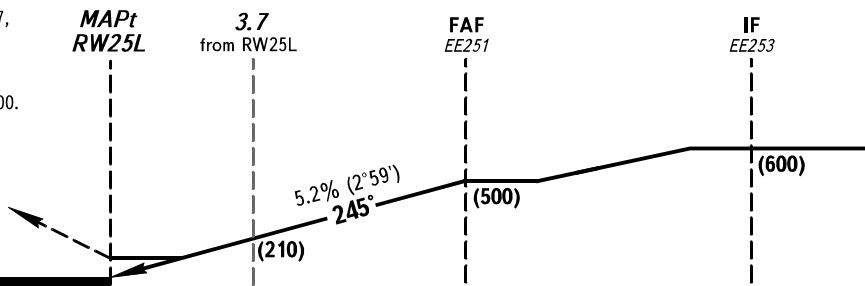
MOSCOW	APPROACH	122.700
SHEREMETYEVO	RADAR	118.100
	TOWER RWY 07R/25L	120.700
	RWY 07L/25R	131.500

**MOSCOW, RUSSIA
SHEREMETYEVO
RNAV (GNSS) RWY 25L**



MISSED APPROACH

Climb straight ahead to (600) to EE227, turn LEFT to NDB UM, to pass it by ATS instruction. After climbing to (200) immediately contact Sheremetyevo-Radar on 118.100.



OCA/H		A	B	C	D	DISTANCE to MAPt				9.0	7.0	5.0	2.0	
Straight-in	RNAV (GNSS)	301(111)	301(111)	301(111)	301(111)	HGT	(485)	(380)	(275)	(120)				
GROUND SPEED		km/h	150	180	210	240	270	300	330	360	390	420	450	
FAF-MAPt 9310m		min:sec	3.43	3.06	2.40	2.20	2.04	1.52	1.42	1.33	1.26	1.20	1.14	
RATE OF DESCENT		m/s	2.2	2.6	3.1	3.5	3.9	4.3	4.8	5.2	5.6	6.0	6.5	