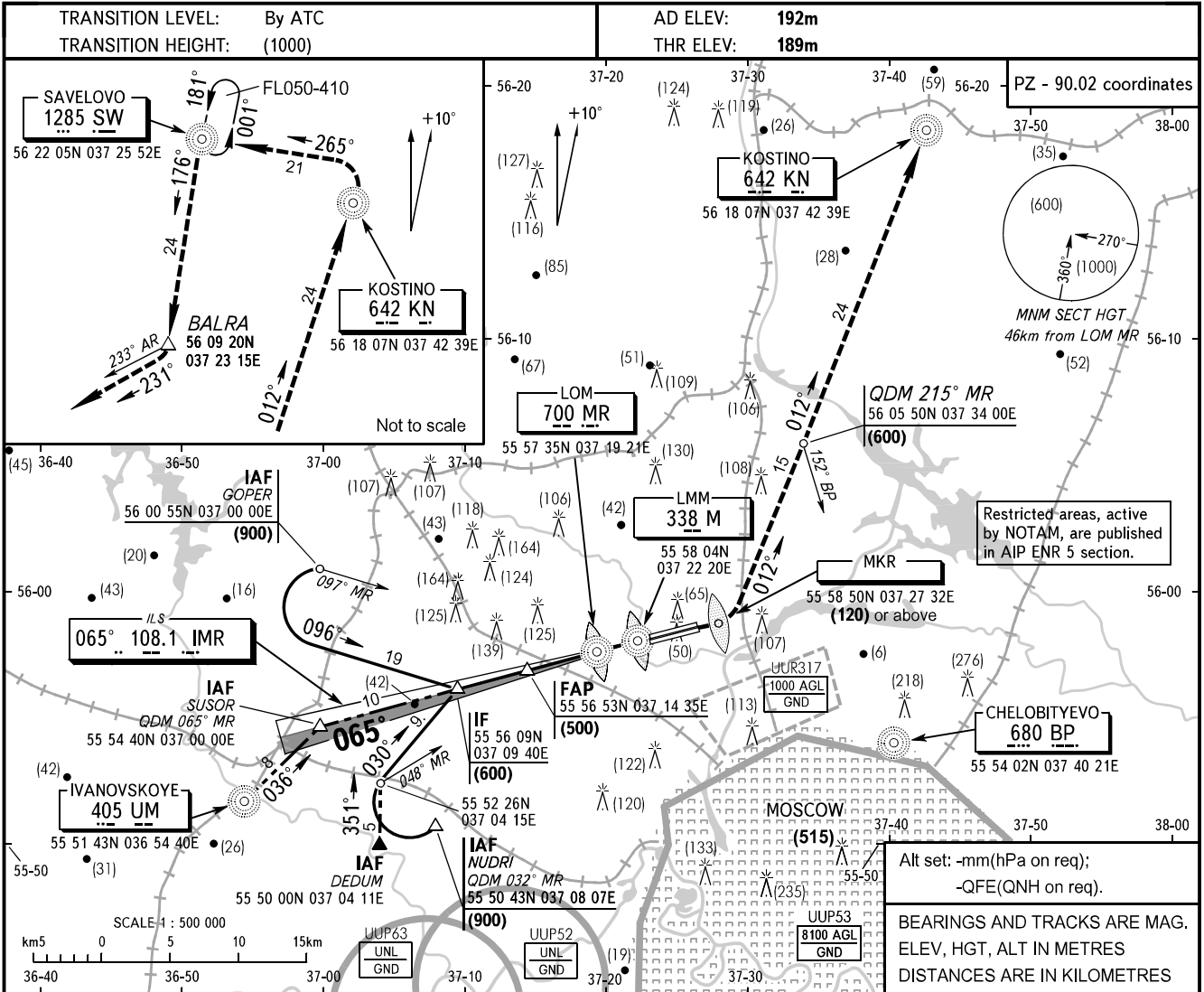


**INSTRUMENT
APPROACH
CHART - ICAO**

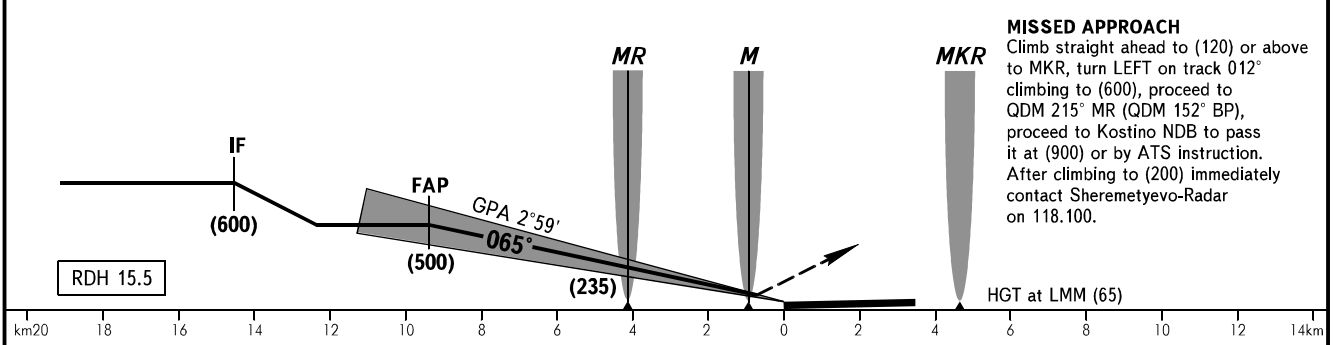
MOSCOW	APPROACH 2	122.700
SHEREMETYEVO RADAR		118.100
TOWER	RWY 07R/25L	120.700
	RWY 07L/25R	131.500

**MOSCOW, RUSSIA
SHEREMETYEVO
ILS, PAR RWY 07L**



Restricted areas, active by NOTAM, are published in AIP ENR 5 section.

Alt set: -mm(hPa on req);
-QFE(QNH on req).
BEARINGS AND TRACKS ARE MAG.
ELEV, HGT, ALT IN METRES
DISTANCES ARE IN KILOMETRES



MISSED APPROACH
Climb straight ahead to (120) or above to MKR, turn LEFT on track 012° climbing to (600), proceed to QDM 215° MR (QDM 152° BP), proceed to Kostino NDB to pass it at (900) or by ATS instruction. After climbing to (200) immediately contact Sheremetyevo-Radar on 118.100.

OCA/H		A	B	C	D
Straight-in Approach	PAR	256(67)	259(70)	262(73)	265(76)
	CAT I	233(44)	236(47)	239(50)	243(54)

WARNING
Interference on glide path shall be expected under VMC.

GROUND SPEED	km/h	150	180	210	240	270	300	330	360	390	420	450
LOM-THR 4088m	min:sec	1.38	1.22	1.10	1.01	0.55	0.49	0.45	0.41	0.38	0.35	0.33
RATE OF DESCENT	m/s	2.2	2.6	3.1	3.5	3.9	4.3	4.8	5.2	5.6	6.0	6.5

CHANGE: NIL