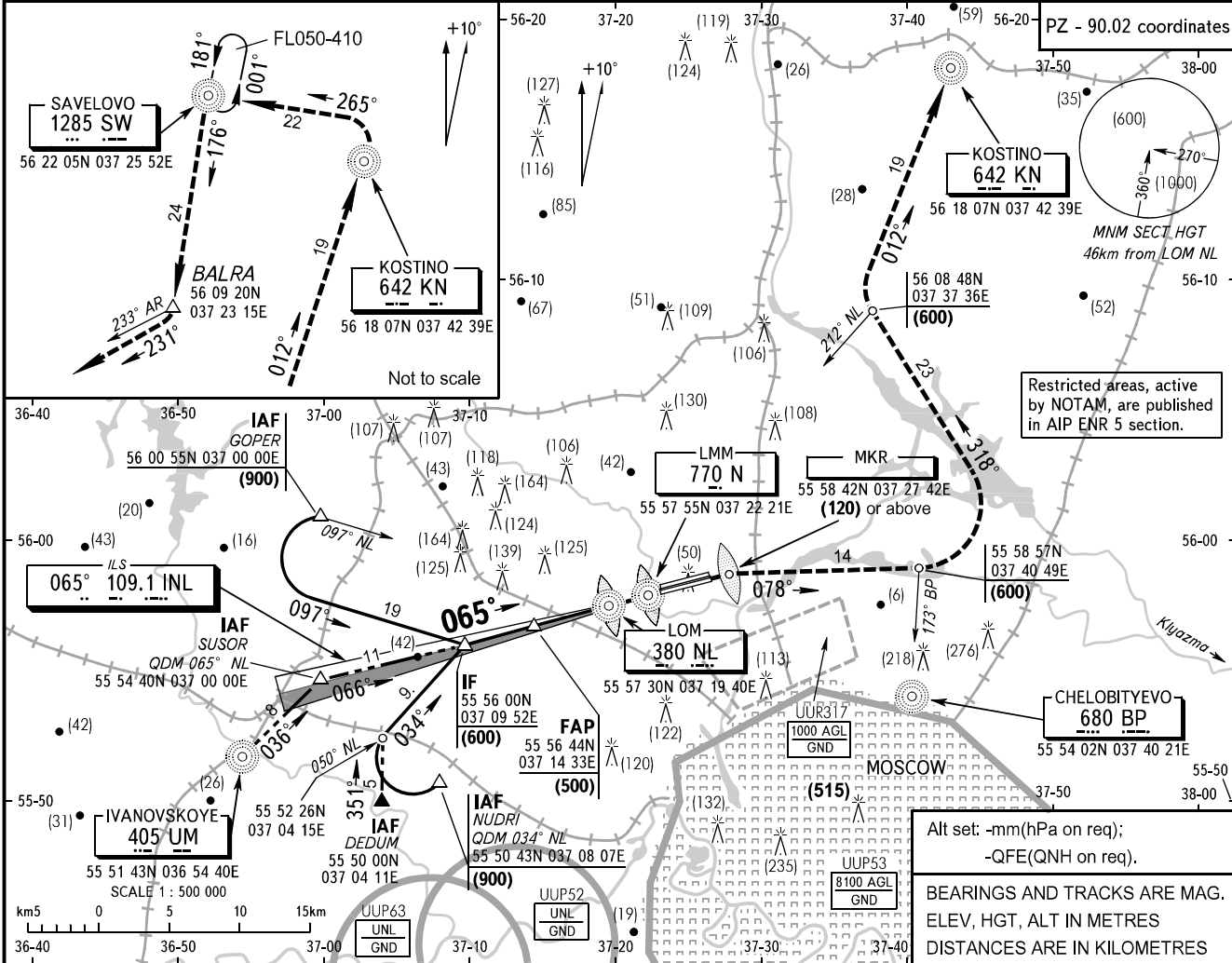


**INSTRUMENT  
APPROACH  
CHART - ICAO**

MOSCOW	APPROACH 2	127.200
SHEREMETYEVO RADAR		118.100
TOWER	RWY 07R/25L	120.700
	RWY 07L/25R	131.500

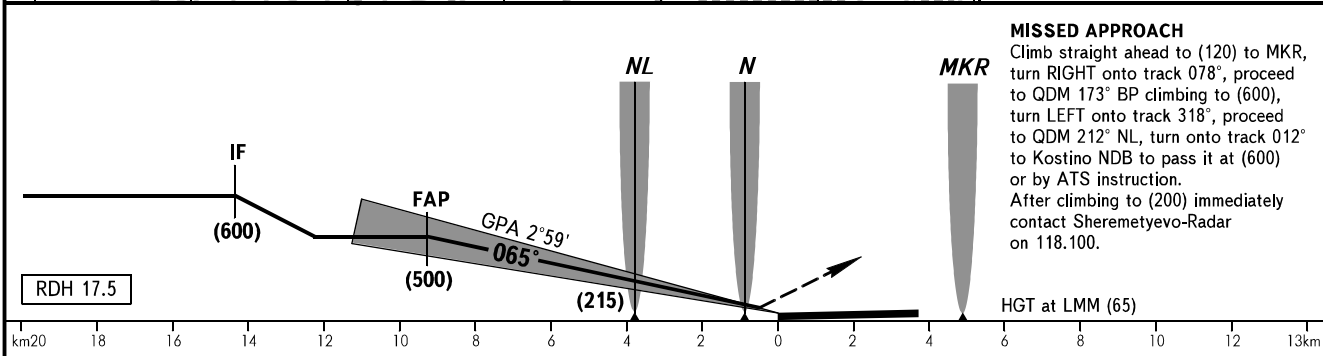
**MOSCOW, RUSSIA  
SHEREMETYEVO  
ILS, PAR RWY 07R**

TRANSITION LEVEL:	By ATC	AD ELEV:	192m
TRANSITION HEIGHT:	(1000)	THR ELEV:	189m



Alt set: -mm(hPa on req);  
-QFE(QNH on req).

BEARINGS AND TRACKS ARE MAG.  
ELEV, HGT, ALT IN METRES  
DISTANCES ARE IN KILOMETRES



**MISSED APPROACH**  
Climb straight ahead to (120) to MKR, turn RIGHT onto track 078°, proceed to QDM 173° BP climbing to (600), turn LEFT onto track 318°, proceed to QDM 212° NL, turn onto track 012° to Kostino NDB to pass it at (600) or by ATS instruction.  
After climbing to (200) immediately contact Sheremetyevo-Radar on 118.100.

HGT at LMM (65)

OCA/H		A	B	C	D	WARNING						
Straight-in Approach	CAT I	234(45)	238(49)	241(52)	246(57)	Interference on glide path shall be expected under VMC.						
	CAT II	206(17)	209(20)	213(24)	218(29)							
	PAR	257(68)	260(71)	263(74)	266(77)							
	CAT IIIA	DA(H) 204(15) RVR 200m										
GROUND SPEED	km/h	150	180	210	240	270	300	330	360	390	420	450
LOM-THR 3791m	min:sec	1.31	1.16	1.05	0.57	0.51	0.46	0.41	0.38	0.35	0.33	0.30
RATE OF DESCENT	m/s	2.2	2.6	3.1	3.5	3.9	4.3	4.8	5.2	5.6	6.0	6.5

CHANGE: New chart