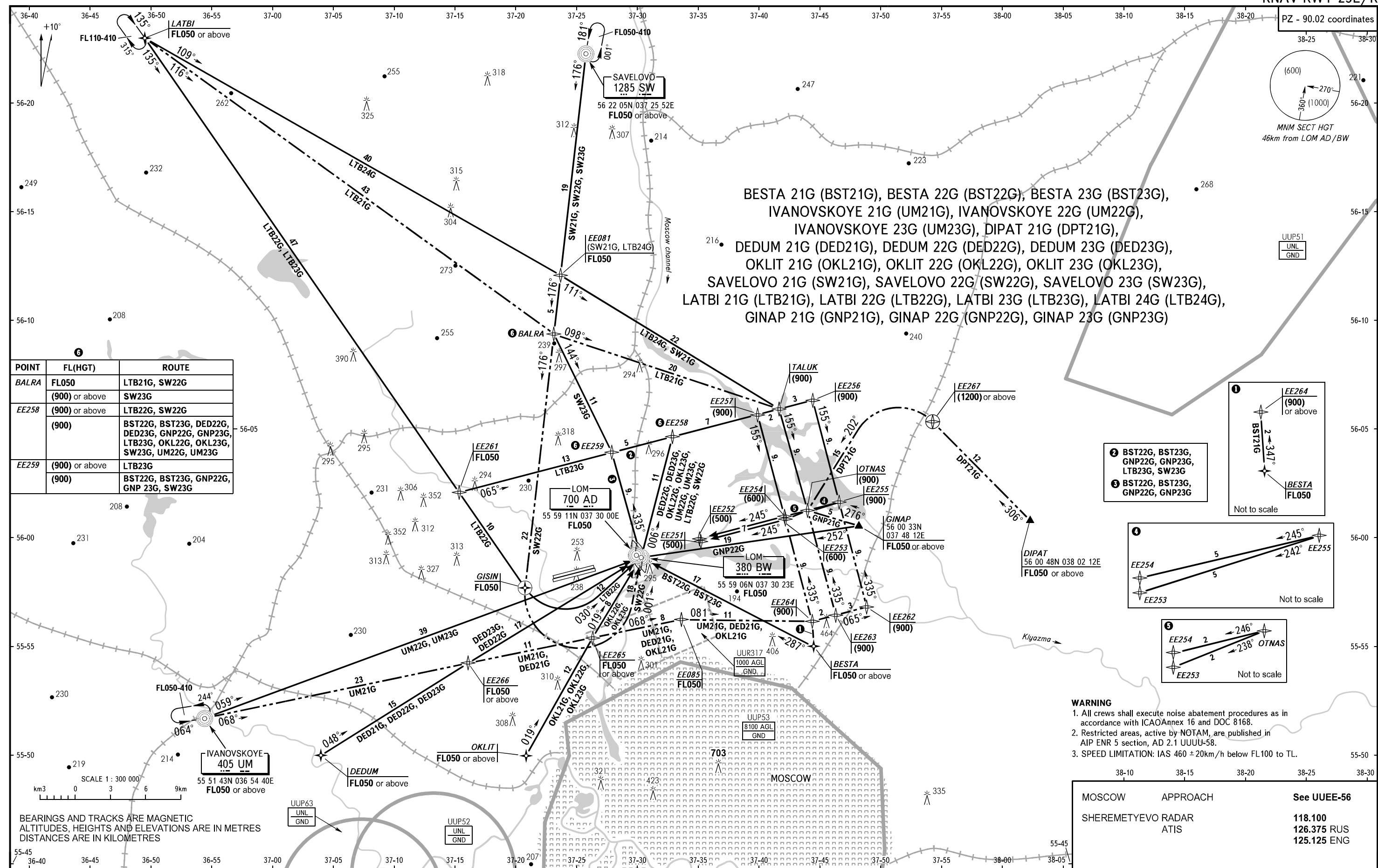


STANDARD ARRIVAL CHART
INSTRUMENT (STAR) - ICAO

TRANSITION
LEVEL: By ATC

MOSCOW, RUSSIA
SHEREMETYEVO
RNAV RWY 25L/R



POINT	FL(HGT)	ROUTE
BALRA	FL050 (900) or above	LTB21G, SW22G SW23G
EE258	(900) or above (900)	LTB22G, SW22G BST22G, BST23G, DED22G, DED23G, GNP22G, GNP23G, LTB23G, OKL22G, OKL23G, SW23G, UM22G, UM23G
EE259	(900) or above (900)	LTB23G BST22G, BST23G, GNP22G, GNP 23G, SW23G

BESTA 21G (BST21G), BESTA 22G (BST22G), BESTA 23G (BST23G),
IVANOVSKOYE 21G (UM21G), IVANOVSKOYE 22G (UM22G),
IVANOVSKOYE 23G (UM23G), DIPAT 21G (DPT21G),
DEDUM 21G (DED21G), DEDUM 22G (DED22G), DEDUM 23G (DED23G),
OKLIT 21G (OKL21G), OKLIT 22G (OKL22G), OKLIT 23G (OKL23G),
SAVELOVO 21G (SW21G), SAVELOVO 22G (SW22G), SAVELOVO 23G (SW23G),
LATBI 21G (LTB21G), LATBI 22G (LTB22G), LATBI 23G (LTB23G), LATBI 24G (LTB24G),
GINAP 21G (GNP21G), GINAP 22G (GNP22G), GINAP 23G (GNP23G)

- WARNING**
- All crews shall execute noise abatement procedures as in accordance with ICAO Annex 16 and DOC 8168.
 - Restricted areas, active by NOTAM, are published in AIP ENR 5 section, AD 2.1 UUUU-58.
 - SPEED LIMITATION: IAS 460 ± 20km/h below FL100 to TL.

MOSCOW	APPROACH	See UUEE-56
SHEREMETYEVO RADAR	ATIS	118.100 126.375 RUS 125.125 ENG

BEARINGS AND TRACKS ARE MAGNETIC
ALTITUDES, HEIGHTS AND ELEVATIONS ARE IN METRES
DISTANCES ARE IN KILOMETRES

CHANGE: FL, HGT