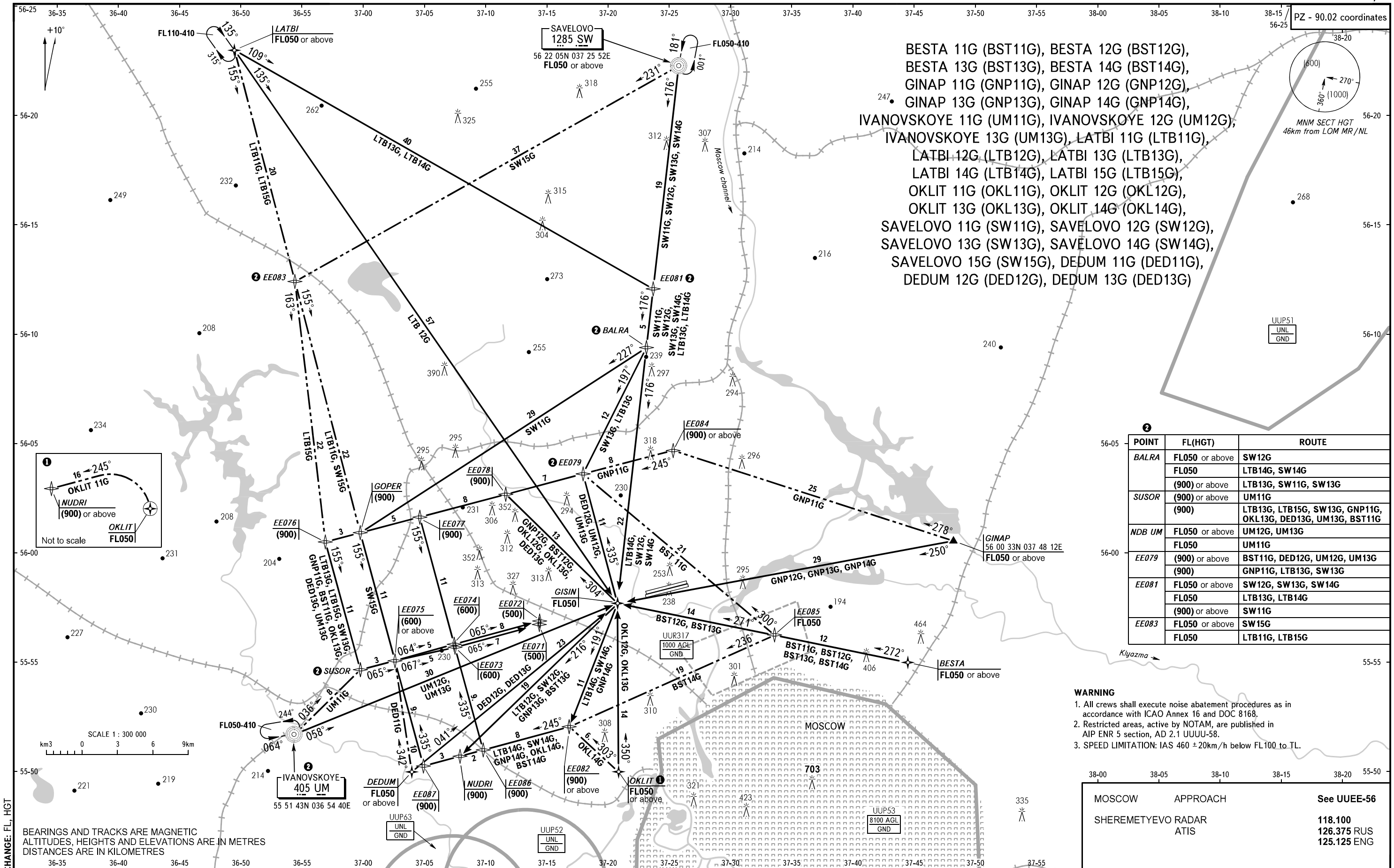


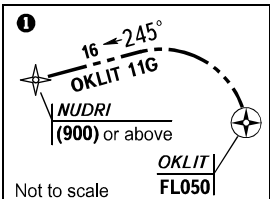
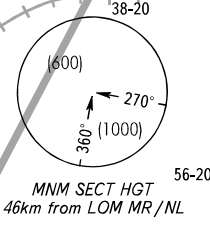
STANDARD ARRIVAL CHART  
INSTRUMENT (STAR) - ICAO

TRANSITION  
LEVEL: By ATC

MOSCOW, RUSSIA  
SHEREMETYEVO  
RNAV RWY 07L/R



BESTA 11G (BST11G), BESTA 12G (BST12G),  
 BESTA 13G (BST13G), BESTA 14G (BST14G),  
 GINAP 11G (GNP11G), GINAP 12G (GNP12G),  
 GINAP 13G (GNP13G), GINAP 14G (GNP14G),  
 IVANOVSKOYE 11G (UM11G), IVANOVSKOYE 12G (UM12G),  
 IVANOVSKOYE 13G (UM13G), LATBI 11G (LTB11G),  
 LATBI 12G (LTB12G), LATBI 13G (LTB13G),  
 LATBI 14G (LTB14G), LATBI 15G (LTB15G),  
 OKLIT 11G (OKL11G), OKLIT 12G (OKL12G),  
 OKLIT 13G (OKL13G), OKLIT 14G (OKL14G),  
 SAVELOVO 11G (SW11G), SAVELOVO 12G (SW12G),  
 SAVELOVO 13G (SW13G), SAVELOVO 14G (SW14G),  
 SAVELOVO 15G (SW15G), DEDUM 11G (DED11G),  
 DEDUM 12G (DED12G), DEDUM 13G (DED13G)



POINT	FL(HGT)	ROUTE
BALRA	FL050 or above	SW12G
	FL050	LTB14G, SW14G
	(900) or above	LTB13G, SW11G, SW13G
SUSOR	(900) or above	UM11G
	(900)	LTB13G, LTB15G, SW13G, GNP11G, OKL13G, DED13G, UM13G, BST11G
NDB UM	FL050 or above	UM12G, UM13G
	FL050	UM11G
EE079	(900) or above	BST11G, DED12G, UM12G, UM13G
	(900)	GNP11G, LTB13G, SW13G
EE081	FL050 or above	SW12G, SW13G, SW14G
	FL050	LTB13G, LTB14G
	(900) or above	SW11G
EE083	FL050 or above	SW15G
	FL050	LTB11G, LTB15G

- WARNING**
- All crews shall execute noise abatement procedures as in accordance with ICAO Annex 16 and DOC 8168.
  - Restricted areas, active by NOTAM, are published in AIP ENR 5 section, AD 2.1 UUUU-58.
  - SPEED LIMITATION: IAS 460 ± 20km/h below FL100 to TL.

MOSCOW	APPROACH	See UUEE-56
SHEREMETYEVO RADAR	ATIS	118.100 126.375 RUS 125.125 ENG