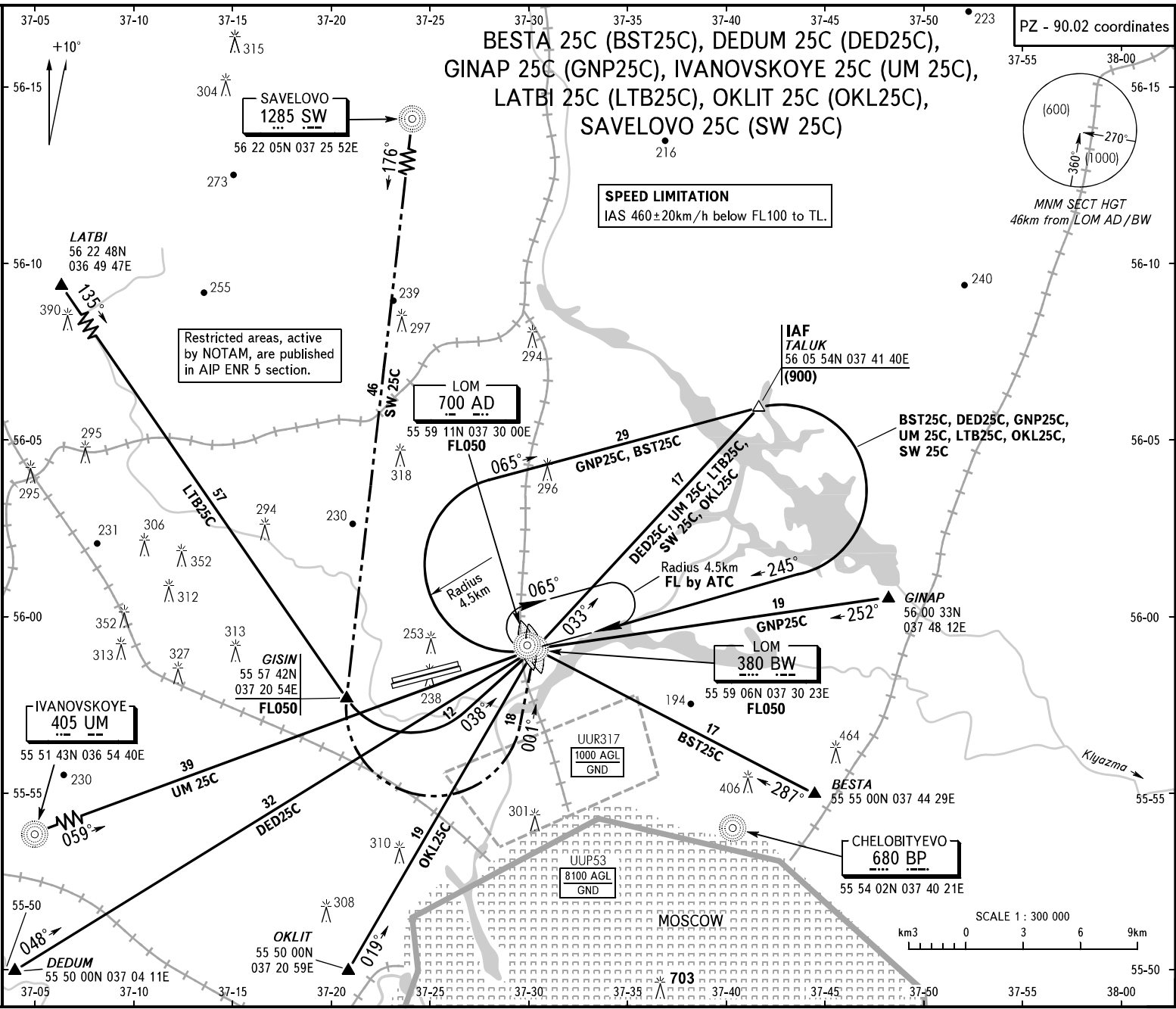


STANDARD ARRIVAL CHART  
INSTRUMENT (STAR) - ICAO

TRANSITION  
LEVEL: By ATC

MOSCOW, RUSSIA  
SHEREMETYEVO  
RWY 25L/25R



Restricted areas, active by NOTAM, are published in AIP ENR 5 section.

**SPEED LIMITATION**  
IAS 460 ± 20km/h below FL100 to TL.

MOSCOW APPROACH  
SHEREMETYEVO RADAR  
See UUEE-56  
118.100

**WARNING**  
All crews shall execute noise abatement procedures as in accordance with ICAO Annex 16 and DOC 8168.

BEARINGS AND TRACKS ARE MAGNETIC  
ALTITUDES, HEIGHTS AND ELEVATIONS ARE IN METRES  
DISTANCES ARE IN KILOMETRES

Federal Air Transport Agency

CHANGE: New chart