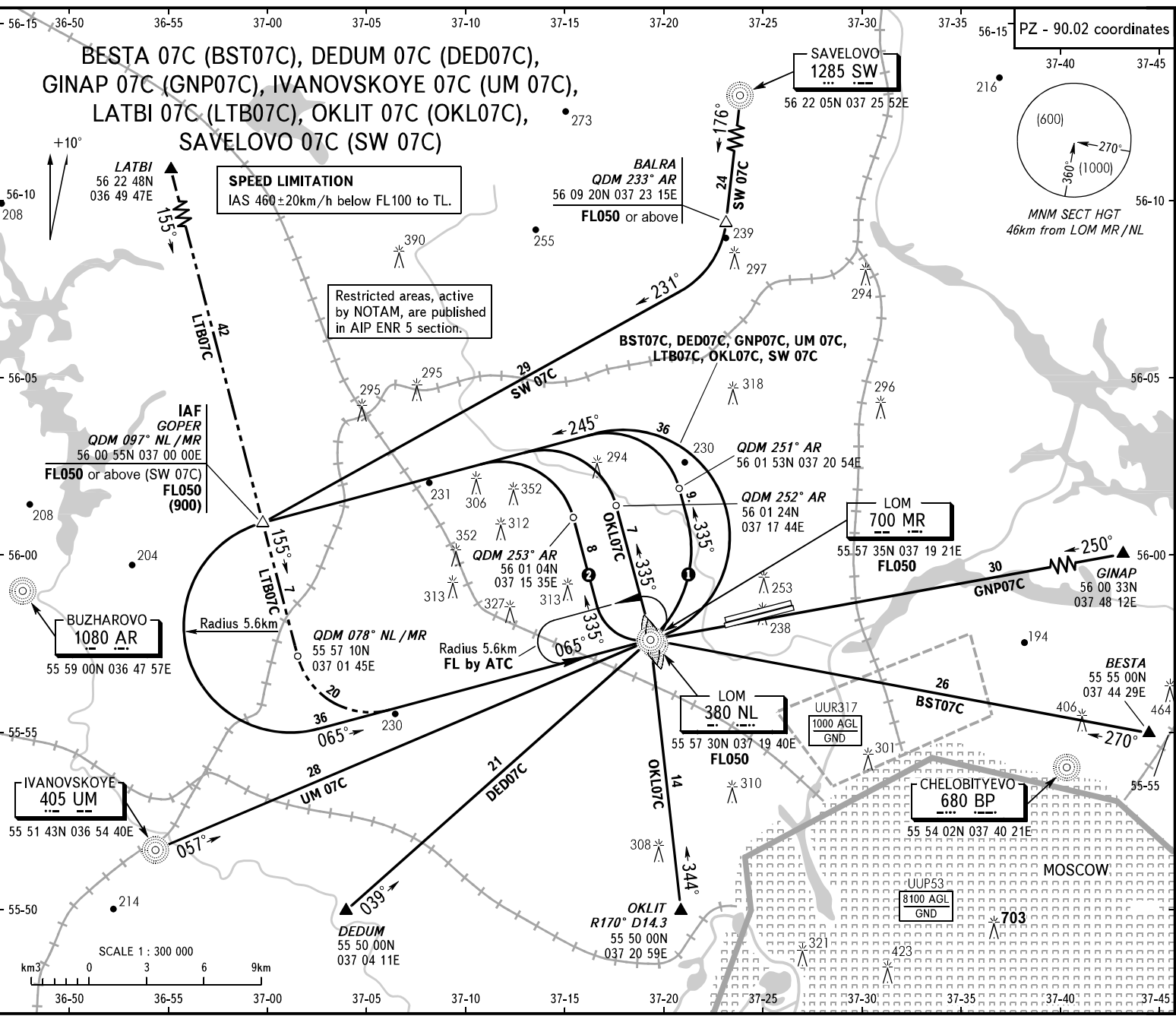


STANDARD ARRIVAL CHART
INSTRUMENT (STAR) - ICAO

TRANSITION
LEVEL: **By ATC**

MOSCOW, RUSSIA
SHEREMETYEVO
RWY 07L/07R



MOSCOW APPROACH
SHEREMETYEVO RADAR
See UUEE-56
118.100

WARNING
All crews shall execute noise abatement procedures as in accordance with ICAO Annex 16 and DOC 8168.

- ① UM 07C, DED07C
- ② GNP07C, BST07C

BEARINGS AND TRACKS ARE MAGNETIC
ALTITUDES, HEIGHTS AND ELEVATIONS ARE IN METRES
DISTANCES ARE IN KILOMETRES