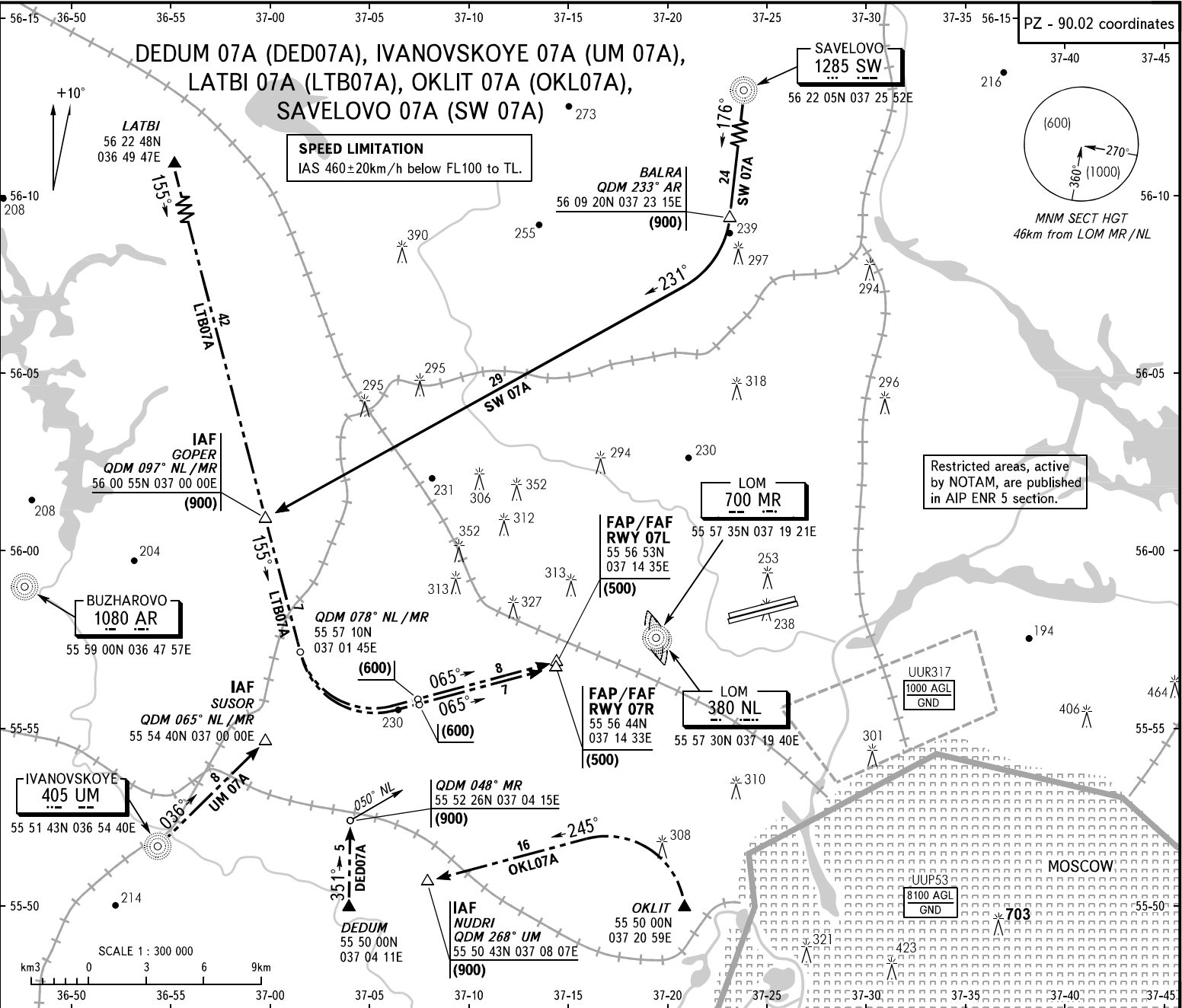


STANDARD ARRIVAL CHART
INSTRUMENT (STAR) - ICAO

TRANSITION
LEVEL: **By ATC**

MOSCOW, RUSSIA
SHEREMETYEVO
RWY 07L/07R



BEARINGS AND TRACKS ARE MAGNETIC
ALTITUDES, HEIGHTS AND ELEVATIONS ARE IN METRES
DISTANCES ARE IN KILOMETRES

APPROACH
See UUEE-56
118.100
MOSCOW
SHEREMETYEVO RADAR

WARNING
All crews shall execute noise abatement procedures as in accordance with ICAO Annex 16 and DOC 8168.