

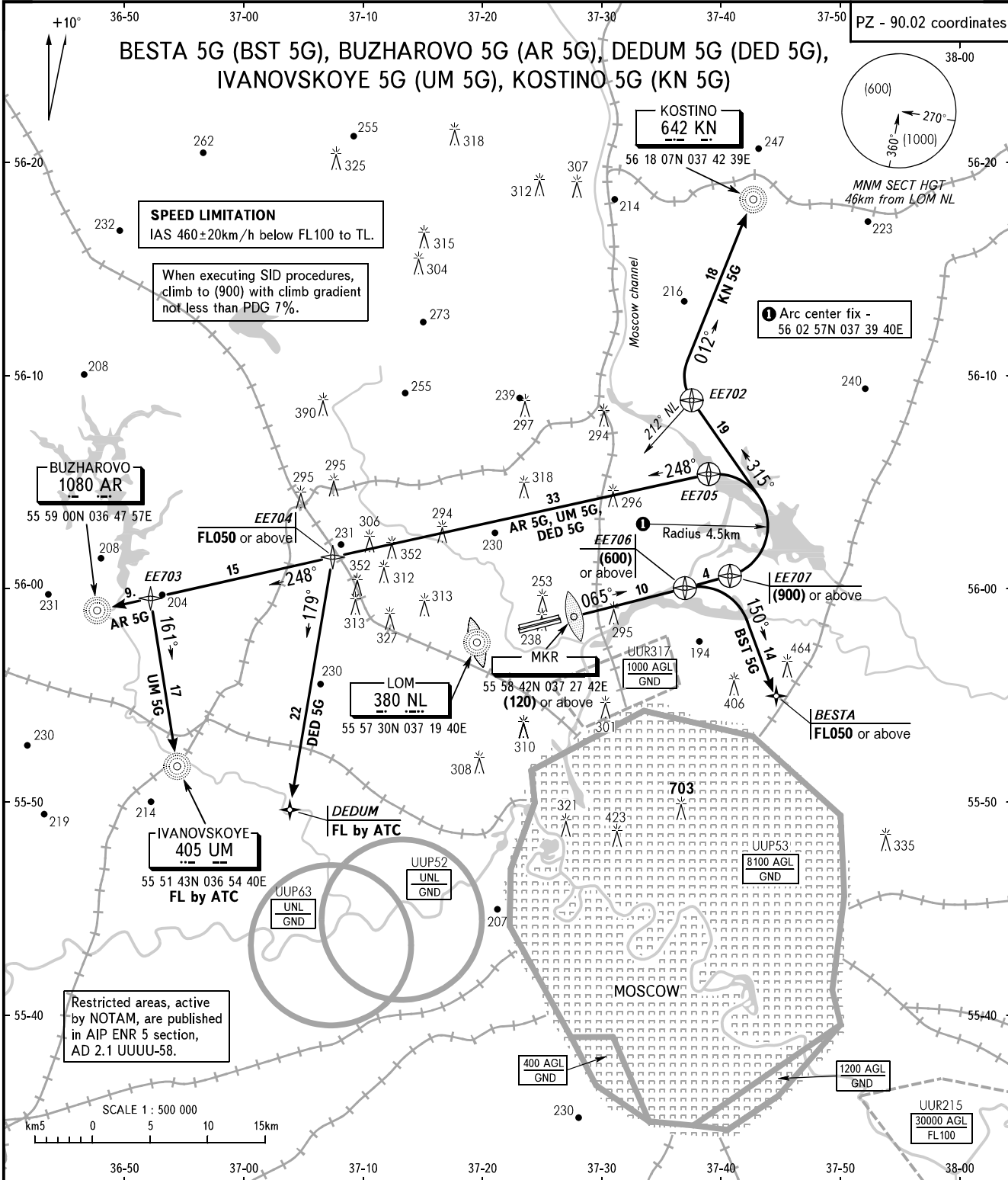
STANDARD DEPARTURE CHART
INSTRUMENT (SID) - ICAO

TRANSITION
HEIGHT : (1000)

MOSCOW, RUSSIA
SHEREMETYEVO
RNAV RWY 07R

BESTA 5G (BST 5G), BUZHAROVO 5G (AR 5G), DEDUM 5G (DED 5G),
IVANOVSKOYE 5G (UM 5G), KOSTINO 5G (KN 5G)

PZ - 90.02 coordinates



SHEREMETYEVO TOWER	RWY 07L/25R	131.500
	RWY 07R/25L	120.700
	RADAR	118.100
MOSCOW	APPROACH	122.700

- WARNING:**
1. After climbing to (200) immediately contact Sheremetyevo-Radar on 118.100.
 2. Initially cleared height of climb after take-off is (900) for all SID.
 3. All crews shall execute noise abatement procedures as in accordance with ICAO Annex 16 and DOC 8168.

BEARINGS AND TRACKS ARE MAGNETIC
ALTITUDES, HEIGHTS AND ELEVATIONS ARE IN METRES
DISTANCES ARE IN KILOMETRES

CHANGE: New chart