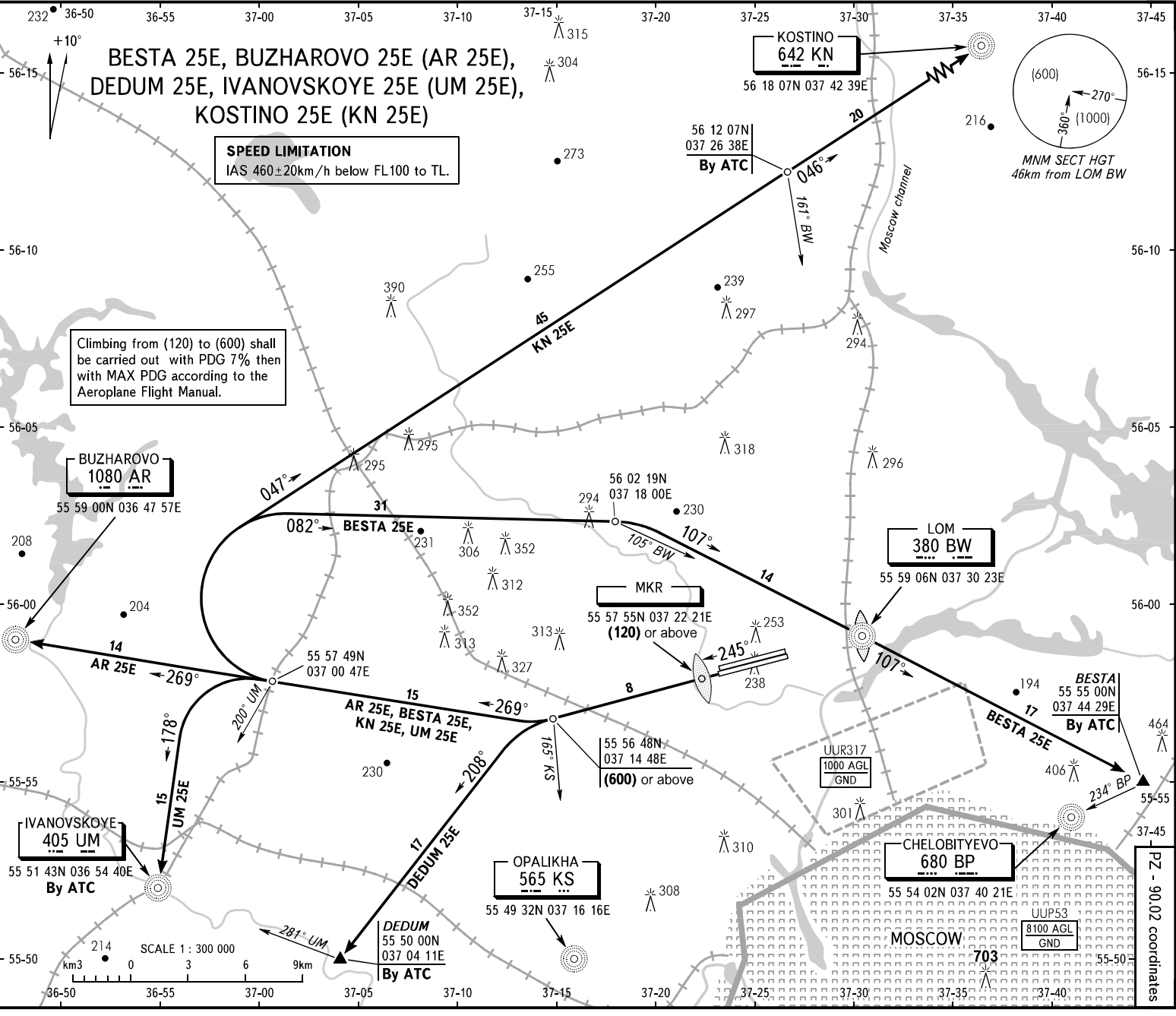


STANDARD DEPARTURE CHART  
INSTRUMENT (SID) - ICAO

TRANSITION  
HEIGHT : (1000)

MOSCOW, SHEREMET'YEVO  
SHEREMET'YEVO  
RWY 25L



SHEREMET'YEVO TOWER **131.500**  
 RWY 07L/25R **120.700**  
 RWY 07R/25L **118.100**  
 RADAR  
 APPROACH **See UJEE-55**

Climbing from (120) to (600) shall be carried out with PDG 7% then with MAX PDG according to the Aeroplane Flight Manual.

**WARNING:**  
 1. After climbing to (200) immediately contact Sheremetyevo-Radar on 118.100.  
 2. Initially cleared height of climb after take-off is (900) for all SID.  
 3. All crews shall execute noise abatement procedures as in accordance with ICAO Annex 16 and DOC 8168.

BEARINGS AND TRACKS ARE MAGNETIC  
 ALTITUDES, HEIGHTS AND ELEVATIONS ARE IN METRES  
 DISTANCES ARE IN KILOMETRES

CHANGE: FL, BRG, DIST, QDM