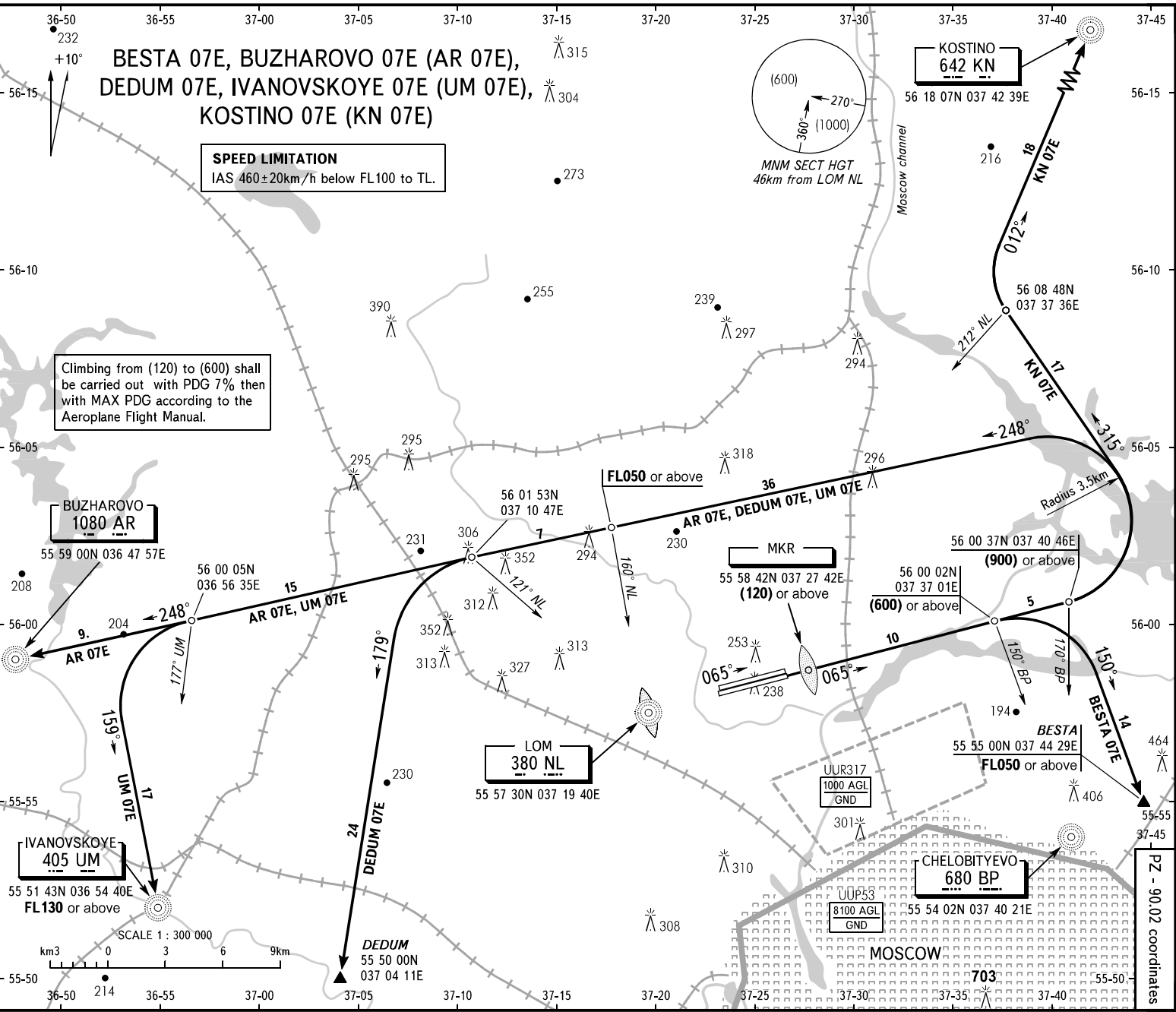


STANDARD DEPARTURE CHART  
INSTRUMENT (SID) - ICAO

TRANSITION  
HEIGHT : (1000)

MOSCOW, RUSSIA  
SHEREMETYEVO  
RWY 07R



SHEREMETYEVO TOWER  
RWY 07L/25R  
RWY 07R/25L  
RADAR  
APPROACH  
MOSCOW

131.500  
120.700  
118.100  
See UUEE-55

BEARINGS AND TRACKS ARE MAGNETIC  
ALTITUDES, HEIGHTS AND ELEVATIONS ARE IN METRES  
DISTANCES ARE IN KILOMETRES

- WARNING:**
1. After climbing to (200) immediately contact Sheremetyevo-Radar on 118.100.
  2. Initially cleared height of climb after take-off is (900) for all SID.
  3. All crews shall execute noise abatement procedures as in accordance with ICAO Annex 16 and DOC 8168.