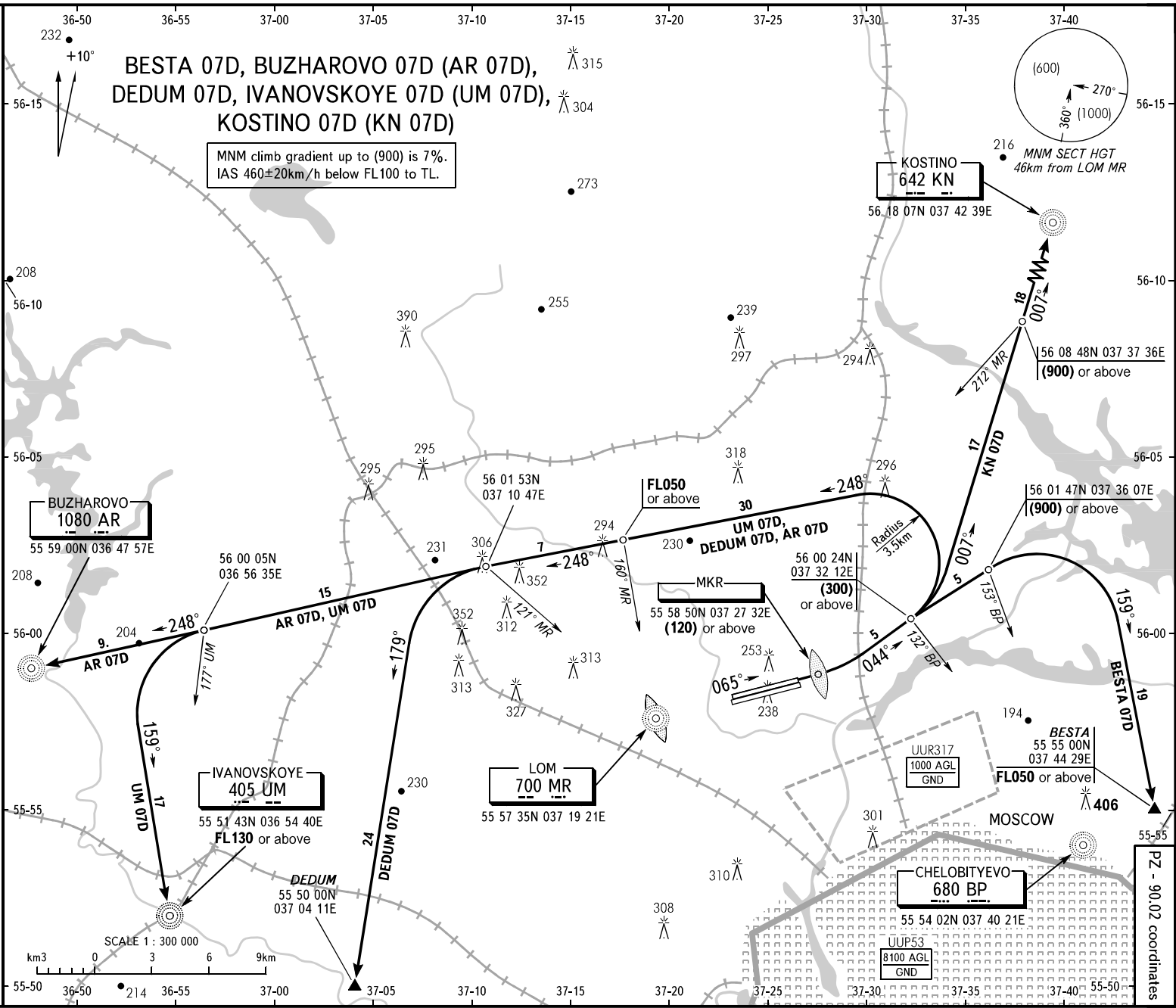


STANDARD DEPARTURE CHART
INSTRUMENT (SID) - ICAO

TRANSITION
HEIGHT : (1000)

MOSCOW, RUSSIA
SHEREMETYEVO
RWY 07L



SHEREMETYEVO TOWER
RWY 07L/25R
RWY 07R/25L
131.500
120.700
118.100
RADAR
APPROACH
See UIEE-55
MOSCOW

- WARNING:**
1. After climbing to (200) immediately contact Sheremetyevo-Radar on 118.100.
 2. Initially cleared height of climb after take-off is (900) for all SID.
 3. All crews shall execute noise abatement procedures as in accordance with ICAO Annex 16 and DOC 8168.

BEARINGS AND TRACKS ARE MAGNETIC
ALTITUDES, HEIGHTS AND ELEVATIONS ARE IN METRES
DISTANCES ARE IN KILOMETRES