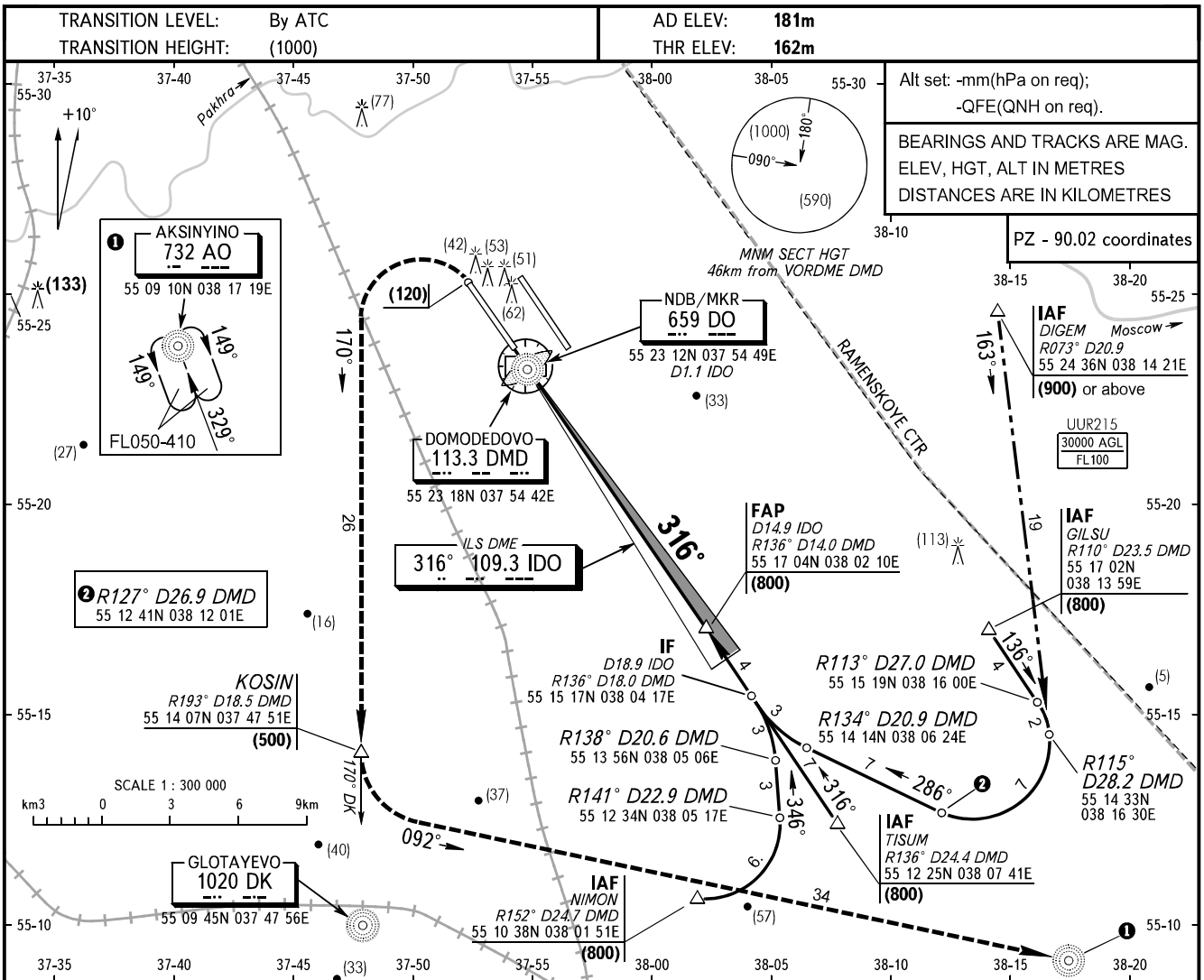


**INSTRUMENT  
APPROACH  
CHART - ICAO**

TOWER 1	<b>118.600</b>
DOMODEDOVO RADAR	<b>127.700</b>

**MOSCOW, RUSSIA**  
DOMODEDOVO  
ILS DME RWY 32L



**MISSED APPROACH**

Climb straight ahead to (120) or D0.0 IDO, whichever is later, turn LEFT to intercept QDM 170° DK, proceed to NCRP KOSIN climbing to (500), after passing KOSIN turn LEFT onto track 092° and proceed to Aksinyino NDB climbing to (600) or by ATS unit instruction.

**DO**  
D1.1 IDO

**FAP**  
D14.9 IDO

GPA 3°00'  
316°

(800)

HGT at NDB/MKR (80)

RDH 17.0

OCA/H		A	B	C	D								
Straight-in	<b>CAT I</b>	205(43)	208(46)	211(49)	216(54)								
	Approach												
GROUND SPEED		km/h	150	180	210	240	270	300	330	360	390	420	450
FAP-THR 14940m		min:sec	5.58	4.59	4.16	3.44	3.19	2.59	2.43	2.29	2.18	2.08	2.00
RATE OF DESCENT		m/s	2.2	2.6	3.0	3.5	3.9	4.3	4.8	5.2	5.6	6.1	6.5