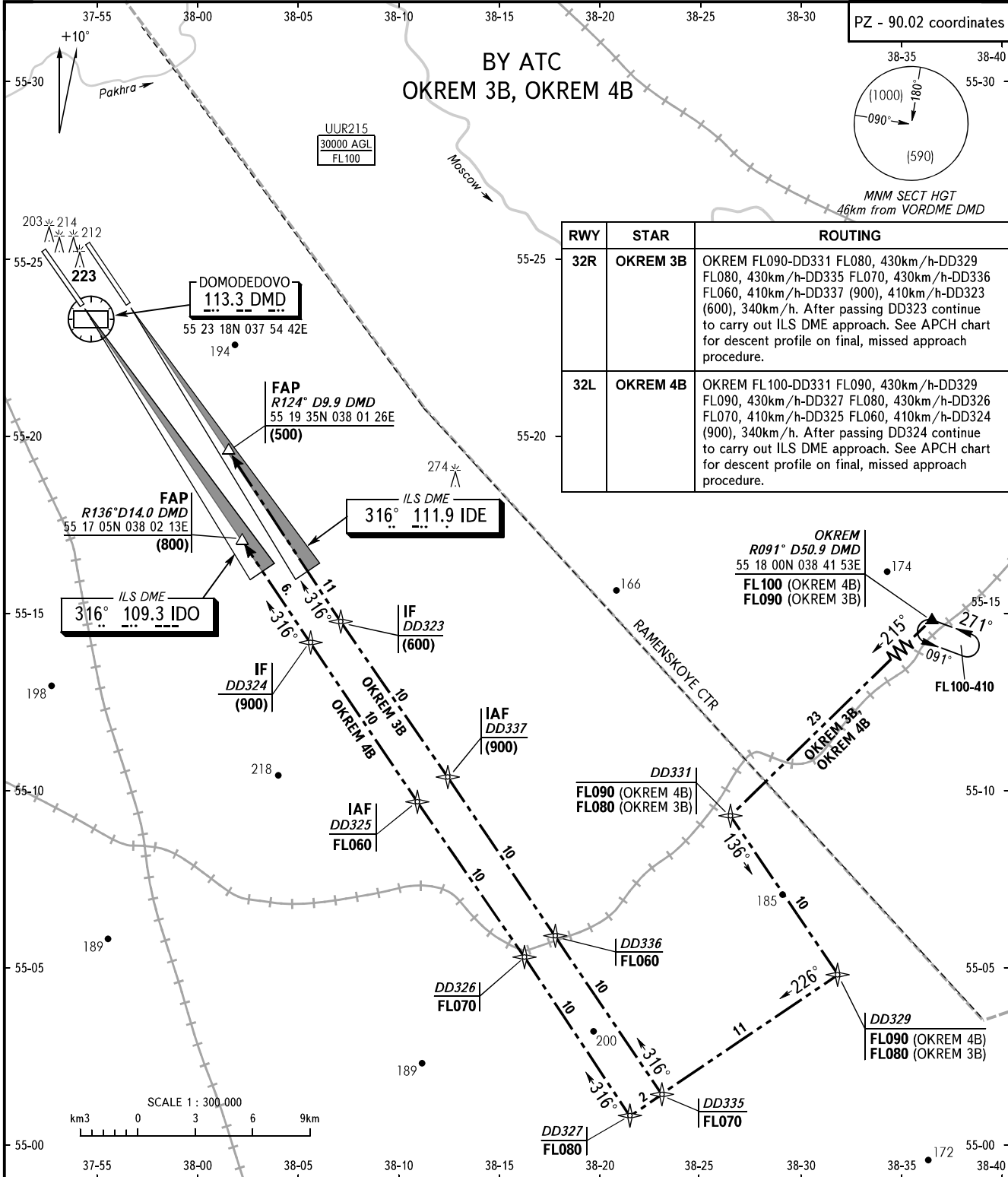


STANDARD ARRIVAL CHART
INSTRUMENT (STAR) - ICAO

TRANSITION
LEVEL: **By ATC**

MOSCOW, RUSSIA
DOMODEDOVO
RNAV (GNSS) ILS DME RWY 32L/R



RWY	STAR	ROUTING
32R	OKREM 3B	OKREM FL090-DD331 FL080, 430km/h-DD329 FL080, 430km/h-DD335 FL070, 430km/h-DD336 FL060, 410km/h-DD337 (900), 410km/h-DD323 (600), 340km/h. After passing DD323 continue to carry out ILS DME approach. See APCH chart for descent profile on final, missed approach procedure.
32L	OKREM 4B	OKREM FL100-DD331 FL090, 430km/h-DD329 FL090, 430km/h-DD327 FL080, 430km/h-DD326 FL070, 410km/h-DD325 FL060, 410km/h-DD324 (900), 340km/h. After passing DD324 continue to carry out ILS DME approach. See APCH chart for descent profile on final, missed approach procedure.

DOMODEDOVO TOWER 1 RWY 32L 118.600
TOWER 2 RWY 32R 119.700
MOSCOW RADAR 127.700
APPROACH See AD 2.1 UDD-56

WARNING:
1. MAX IAS shall be 460km/h at altitudes below FL100.
2. All ACFT shall follow the noise abatement procedures at all times as in accordance with ICAO DOC 8168.

BEARINGS AND TRACKS ARE MAGNETIC
ALTITUDES, HEIGHTS AND ELEVATIONS ARE IN METRES
DISTANCES ARE IN KILOMETRES