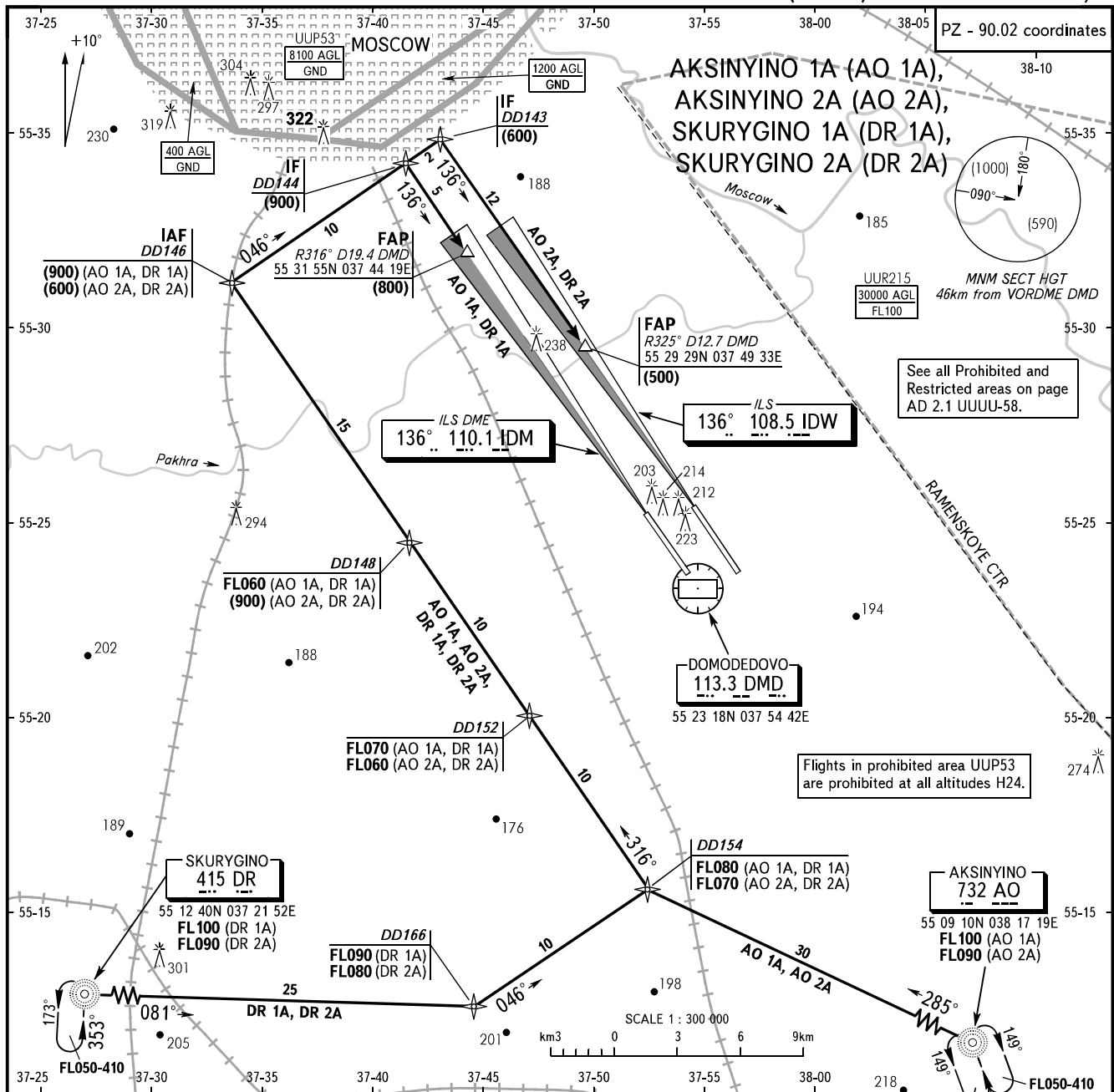


STANDARD ARRIVAL CHART
INSTRUMENT (STAR) - ICAO

TRANSITION
LEVEL: By ATC

MOSCOW, RUSSIA
DOMODEDOVO
RNAV (GNSS) ILS DME RWY 14R/L



RWY	STAR	ROUTING
14R	SKURYGINO 1A (DR 1A)	DR FL100-DD166 FL090, 410km/h
	AKSINYINO 1A (AO 1A)	AO FL100
14L	SKURYGINO 2A (DR 2A)	DR FL090-DD166 FL080, 410km/h
	AKSINYINO 2A (AO 2A)	AO FL090

DOMODEDOVO TOWER 1	RWY 14R	118.600	WARNING: 1. MAX IAS shall be 460km/h at altitudes below FL100. 2. All ACFT shall follow the noise abatement procedures at all times as in accordance with ICAO DOC 8168.
DOMODEDOVO TOWER 2	RWY 14L	119.700	
DOMODEDOVO RADAR		127.700	
MOSCOW APPROACH		See AD 2.1 UDD-56	

BEARINGS AND TRACKS ARE MAGNETIC
ALTITUDES, HEIGHTS AND ELEVATIONS ARE IN METRES
DISTANCES ARE IN KILOMETRES