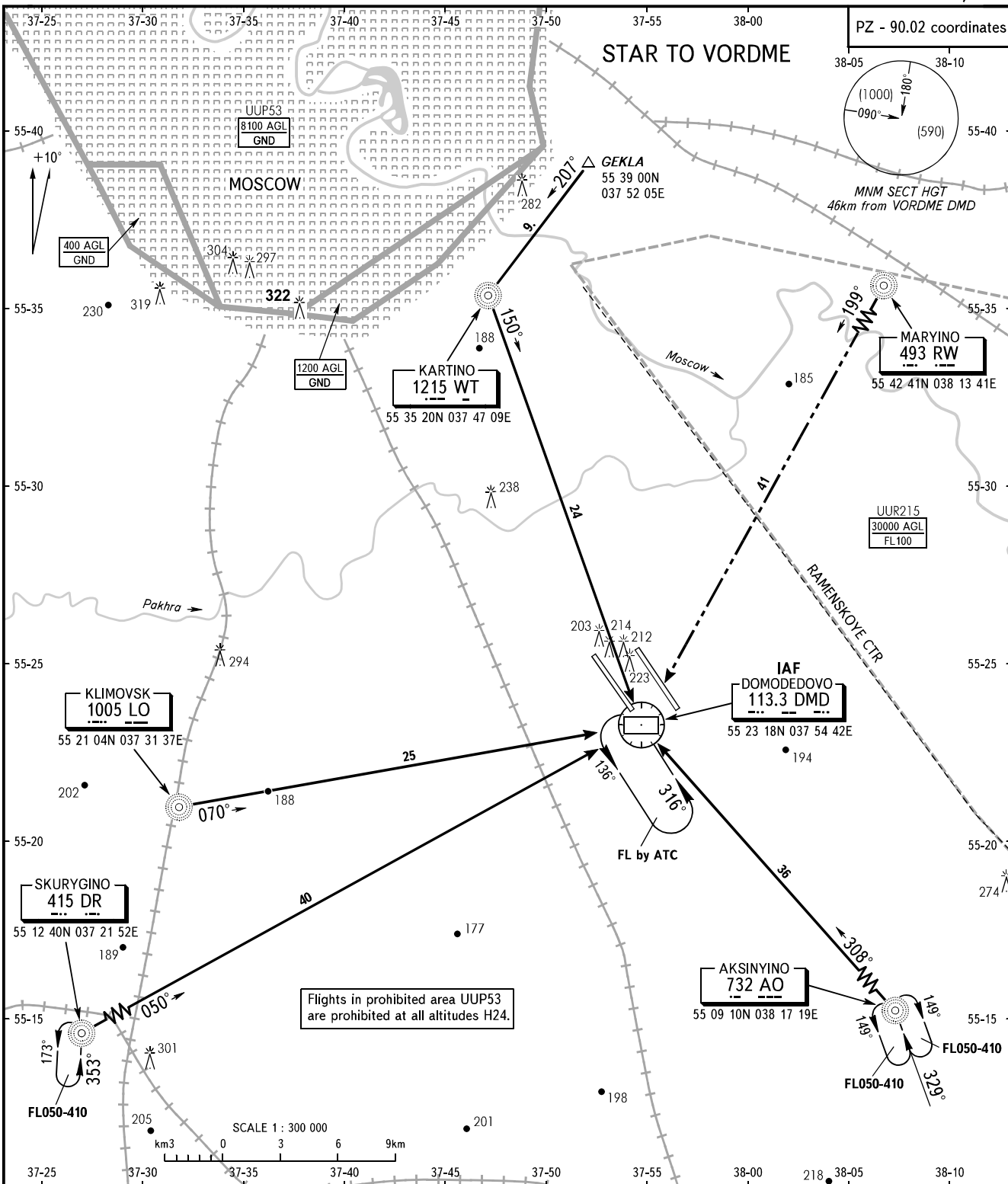


STANDARD ARRIVAL CHART
INSTRUMENT (STAR) - ICAO

TRANSITION
LEVEL: **By ATC**

MOSCOW, RUSSIA
DOMODEDOVO
RWY 14R/32L



DOMODEDOVO TOWER 1 RWY 14R/32L	118.600
RADAR	127.700
MOSCOW APPROACH	See AD 2.1 UDD-56

WARNING:

1. The routes shall be assigned by ATS unit.
2. MAX IAS shall be 460km/h at altitudes below FL100.
3. All ACFT shall follow the noise abatement procedures at all times as in accordance with ICAO DOC 8168.

BEARINGS AND TRACKS ARE MAGNETIC
ALTITUDES, HEIGHTS AND ELEVATIONS ARE IN METRES
DISTANCES ARE IN KILOMETRES

CHANGE: Area UUP53