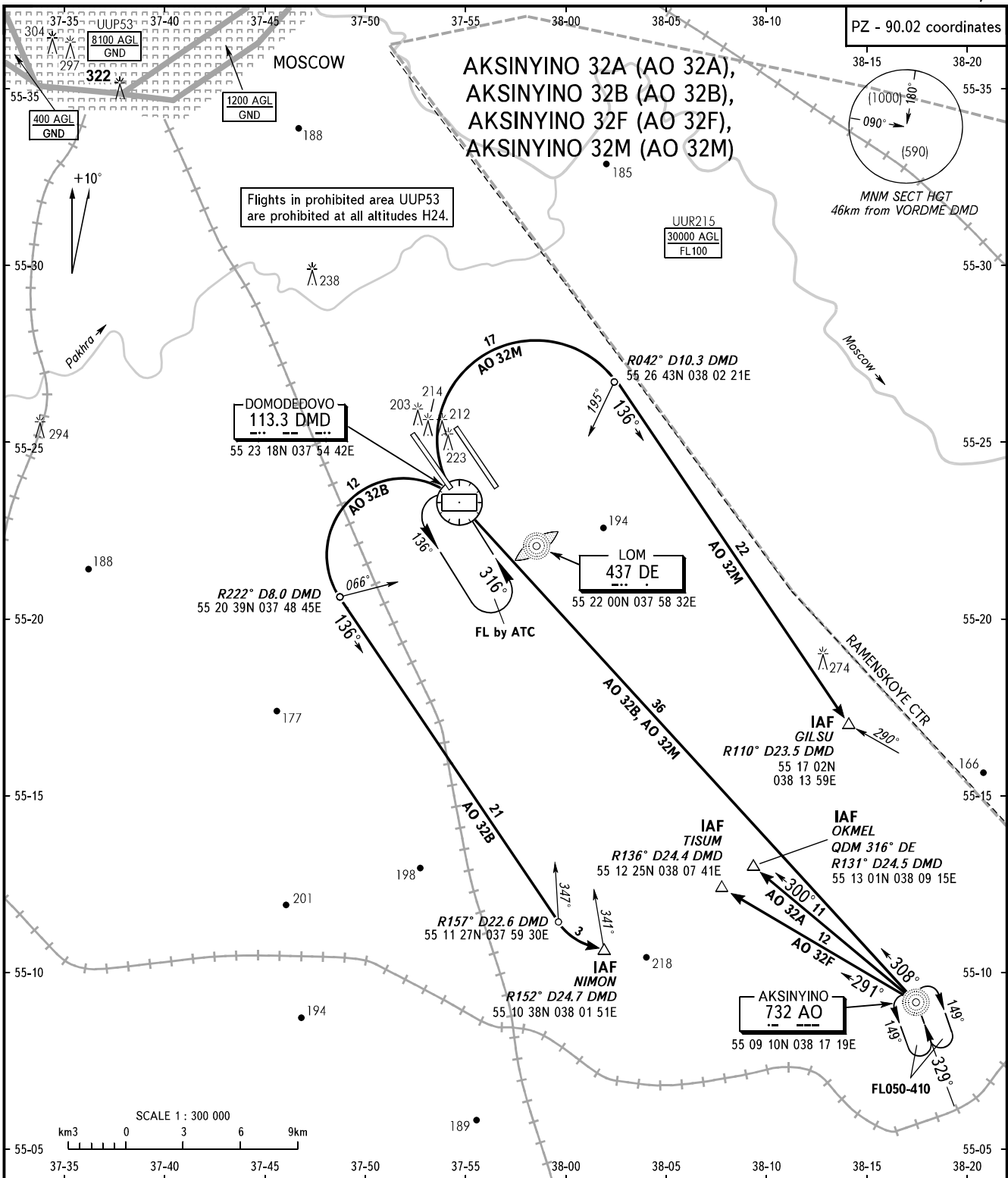


STANDARD ARRIVAL CHART  
INSTRUMENT (STAR) - ICAO

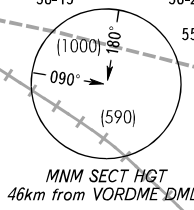
TRANSITION  
LEVEL: **By ATC**

MOSCOW, RUSSIA  
DOMODEDOVO  
RWY 32L/R



PZ - 90.02 coordinates

Flights in prohibited area UUP53 are prohibited at all altitudes H24.



DOMODEDOVO  
113.3 DMD  
55 23 18N 037 54 42E

LOM  
437 DE  
55 22 00N 037 58 32E

IAF  
GILSU  
R110° D23.5 DMD  
55 17 02N  
038 13 59E

IAF  
OKMEL  
QDM 316° DE  
R131° D24.5 DMD  
55 13 01N 038 09 15E

IAF  
NIMON  
R152° D24.7 DMD  
55 10 38N 038 01 51E

AKSINYINO  
732 AO  
55 09 10N 038 17 19E

DOMODEDOVO TOWER 1	RWY 32L	118.600
DOMODEDOVO TOWER 2	RWY 32R	119.700
MOSCOW RADAR		127.700
MOSCOW APPROACH		See AD 2.1 UDD-56

- WARNING:**
- MAX IAS shall be 460km/h at altitudes below FL100.
  - All ACFT shall follow the noise abatement procedures at all times as in accordance with ICAO DOC 8168.

BEARINGS AND TRACKS ARE MAGNETIC  
ALTITUDES, HEIGHTS AND ELEVATIONS ARE IN METRES  
DISTANCES ARE IN KILOMETRES

CHANGE: Area UUP53