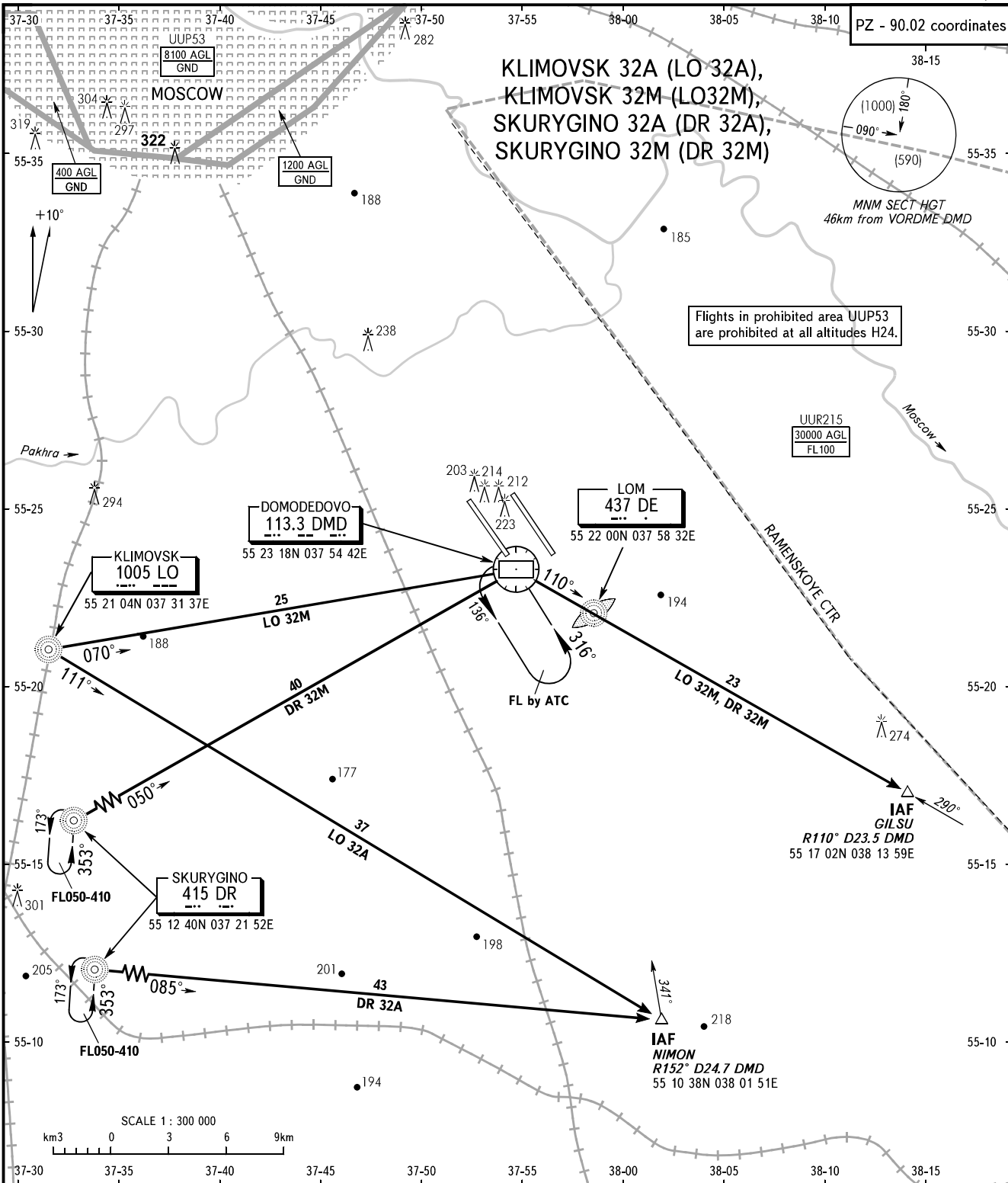


STANDARD ARRIVAL CHART
INSTRUMENT (STAR) - ICAO

TRANSITION
LEVEL : By ATC

MOSCOW, RUSSIA
DOMODEDOVO
RWY 32L/R



DOMODEDOVO	TOWER 1	RWY 32L	118.600
	TOWER 2	RWY 32R	119.700
	RADAR		127.700
MOSCOW	APPROACH		See AD 2.1 UDD-56

WARNING:
1. MAX IAS shall be 460km/h at altitudes below FL100.
2. All ACFT shall follow the noise abatement procedures at all times as in accordance with ICAO DOC 8168.

BEARINGS AND TRACKS ARE MAGNETIC
ALTITUDES, HEIGHTS AND ELEVATIONS ARE IN METRES
DISTANCES ARE IN KILOMETRES

CHANGE: Area UUP53