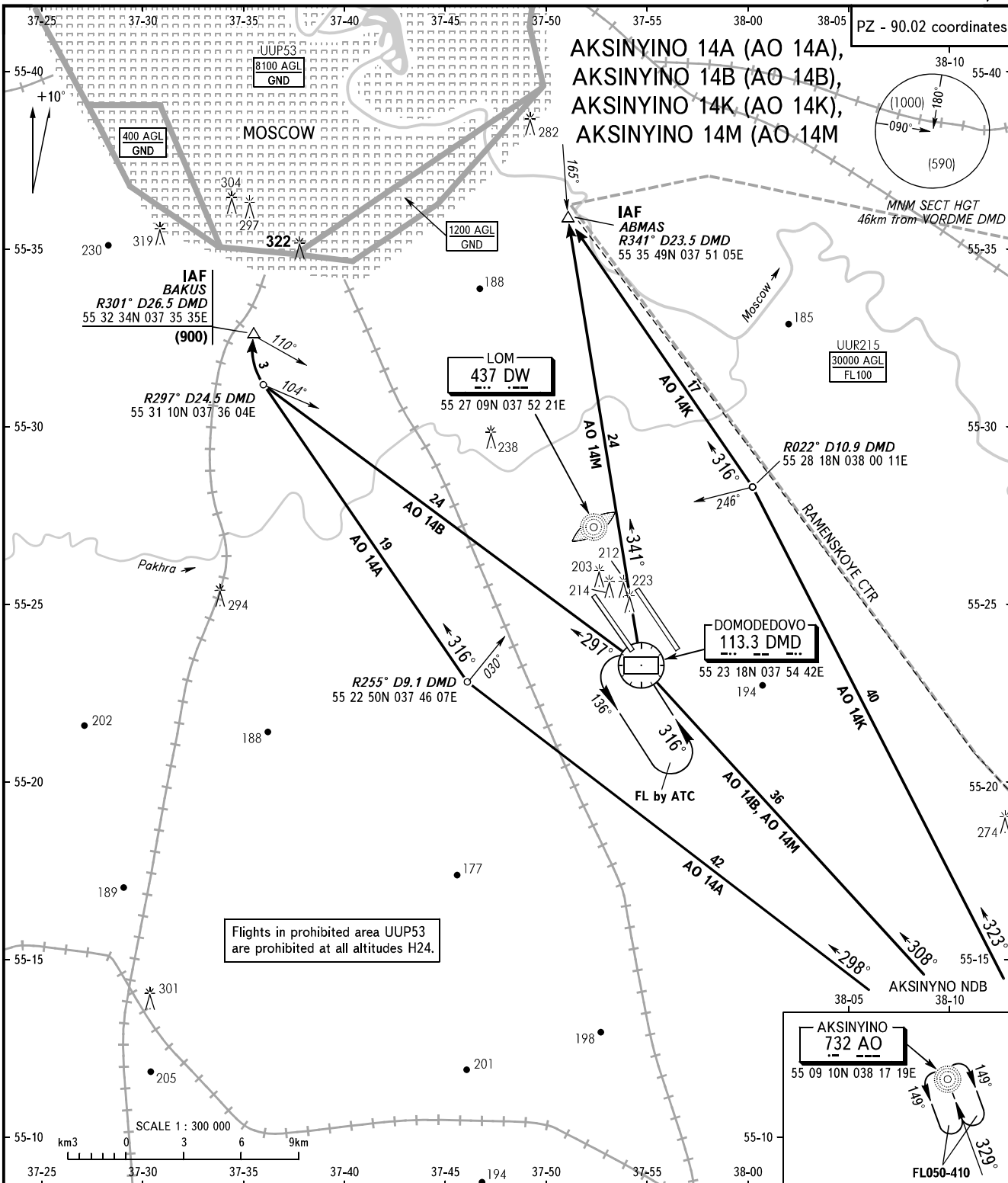


STANDARD ARRIVAL CHART
INSTRUMENT (STAR) - ICAO

MOSCOW, RUSSIA
DOMODEDOVO
RWY 14R/L

TRANSITION
LEVEL: **By ATC**

PZ - 90.02 coordinates



Flights in prohibited area UUP53 are prohibited at all altitudes H24.

SCALE 1 : 300 000

DOMODEDOVO TOWER 1	RWY 14R	118.600
DOMODEDOVO TOWER 2	RWY 14L	119.700
DOMODEDOVO RADAR		127.700
MOSCOW APPROACH		See AD 2.1 UDD-56

- WARNING:**
1. MAX IAS shall be 460km/h at altitudes below FL100.
 2. All ACFT shall follow the noise abatement procedures at all times as in accordance with ICAO DOC 8168.

BEARINGS AND TRACKS ARE MAGNETIC
ALTITUDES, HEIGHTS AND ELEVATIONS ARE IN METRES
DISTANCES ARE IN KILOMETRES

CHANGE: Area UUP53