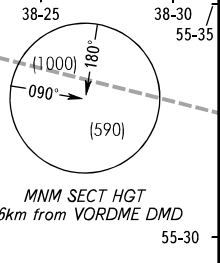


STANDARD DEPARTURE CHART  
INSTRUMENT (SID) - ICAO

TRANSITION  
HEIGHT: (1000)

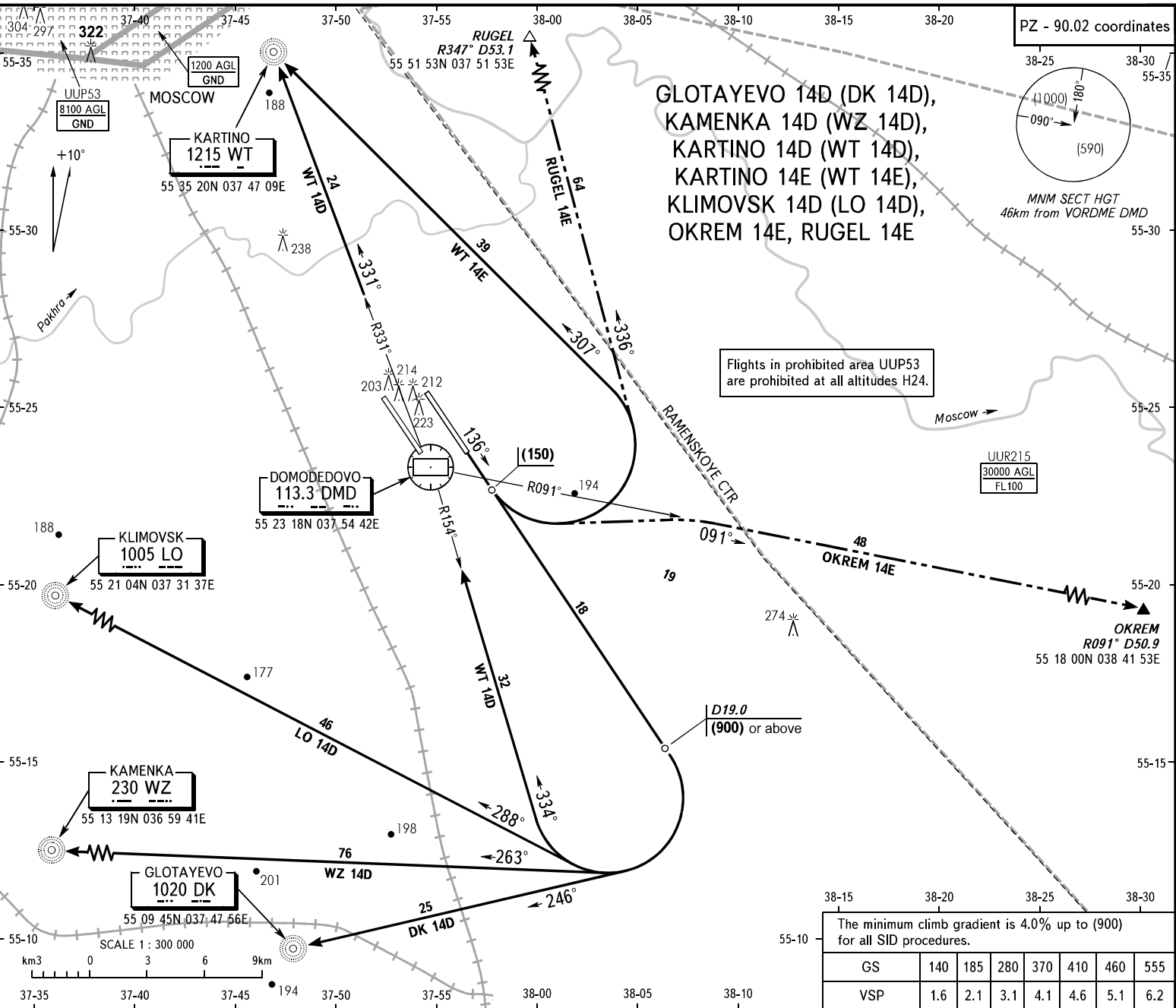
MOSCOW, RUSSIA  
DOMODEDOVO  
RWY 14L

PZ - 90.02 coordinates



GLOTAYEVO 14D (DK 14D),  
KAMENKA 14D (WZ 14D),  
KARTINO 14D (WT 14D),  
KARTINO 14E (WT 14E),  
KLIMOVSK 14D (LO 14D),  
OKREM 14E, RUGEL 14E

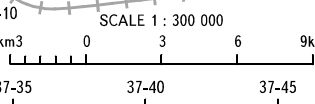
Flights in prohibited area UUP53  
are prohibited at all altitudes H24.



The minimum climb gradient is 4.0% up to (900)  
for all SID procedures.

	140	185	280	370	410	460	555
GS	1.6	2.1	3.1	4.1	4.6	5.1	6.2
VSP	1.6	2.1	3.1	4.1	4.6	5.1	6.2

DOMODEDOVO TOWER 2 RWY 14L  
RADAR APPROACH  
MOSCOW  
119.700  
127.700  
See AD 2.1 UDD-55



- WARNING:**
- 1. After take-off and climbing to (200) immediately contact Domodedovo-Radar on 127.700.
  - 2. The initially cleared height of climb is (900). Further climb is by ATS unit instruction.
  - 3. All ACFT shall follow the noise abatement procedures at all times as in accordance with ICAO DOC 8168.
  - 4. A procedure of simultaneous departures is AVBL.

BEARINGS AND TRACKS ARE MAGNETIC  
ALTITUDES, HEIGHTS AND ELEVATIONS ARE IN METRES  
DISTANCES ARE IN KILOMETRES