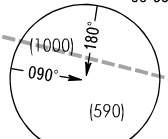


STANDARD DEPARTURE CHART
INSTRUMENT (SID) - ICAO

TRANSITION
HEIGHT : (1000)

MOSCOW, RUSSIA
DOMODEDOVO
RWY 32R

PZ - 90.02 coordinates



CHERUSTI 32E (SF 32E),
GLOTAYEVO 32D (DK 32D),
GLOTAYEVO 32E (DK 32E),
KARTINO 32D (WT 32D),
KLIMOVSK 32D (LO 32D),
OKREM 32E

CHERUSTI
410 SF
55 32 54N 039 59 49E
FL060-410

RAMEK
R068° D26.7
55 26 12N 038 19 29E

OKREM
R091° D50.9
55 18 00N 038 41 53E

UUR215
30000 AGL
FL100

LMM
887 E
55 23 18N 037 56 59E

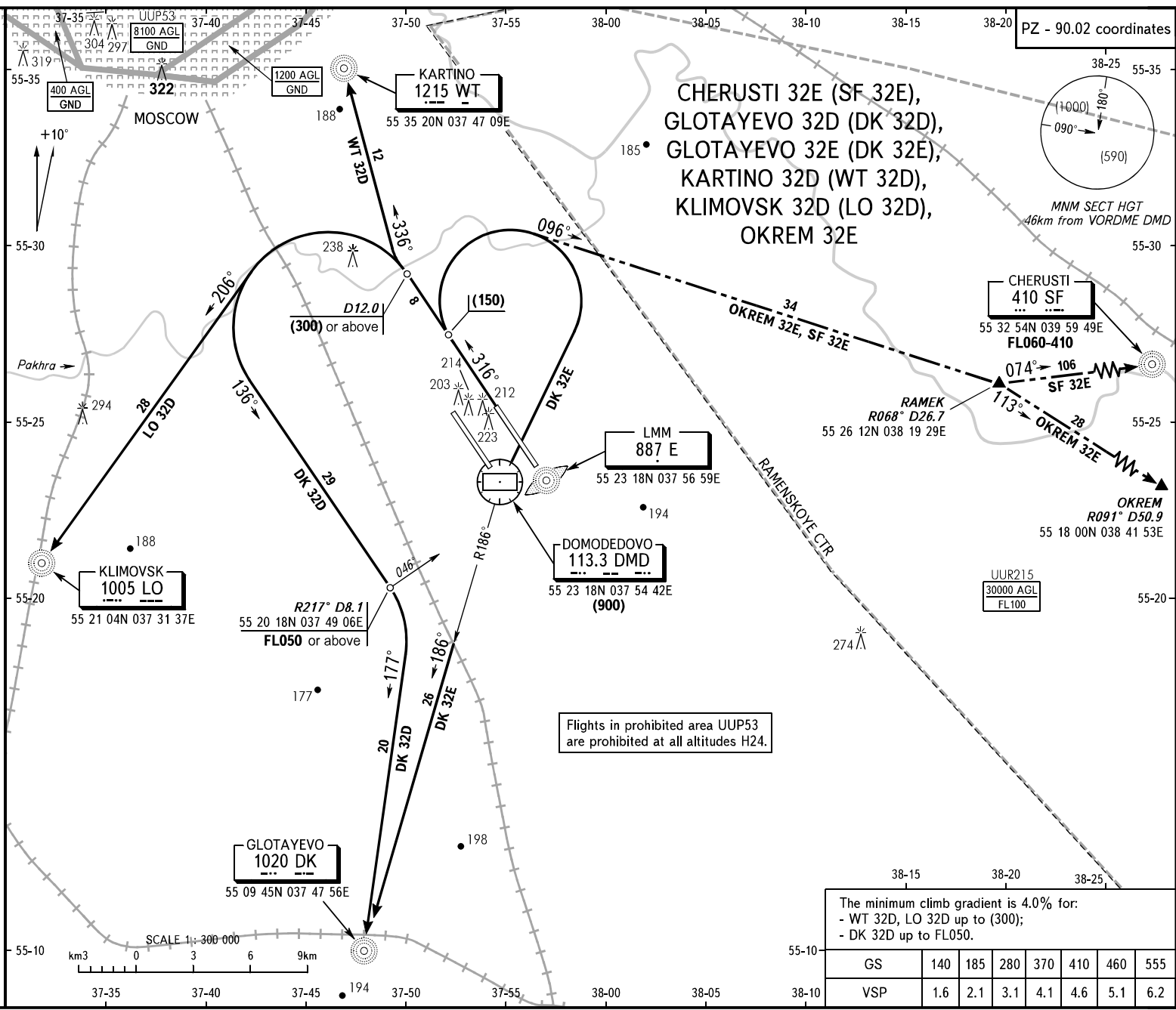
DOMODEDOVO
113.3 DMD
55 23 18N 037 54 42E
(900)

Flights in prohibited area UUP53
are prohibited at all altitudes H24.

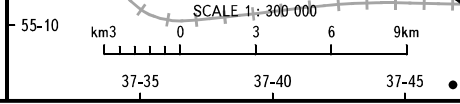
The minimum climb gradient is 4.0% for:

- WT 32D, LO 32D up to (300);
- DK 32D up to FL050.

GS	140	185	280	370	410	460	555
VSP	1.6	2.1	3.1	4.1	4.6	5.1	6.2



55-35 37-35 37-40 37-45 37-50 37-55 38-00 38-05 38-10 38-15 38-20 38-25 55-30 55-25 55-20 55-10



DOMODEDOVO TOWER 2 RWY 32R 119.700
RADAR 127.700
MOSCOW APPROACH See AD 2.1 UDD-55

BEARINGS AND TRACKS ARE MAGNETIC
ALTITUDES, HEIGHTS AND ELEVATIONS ARE IN METRES
DISTANCES ARE IN KILOMETRES

WARNING:

1. After take-off and climbing to (200) immediately contact Domodedovo-Radar on 127.700.
2. The initially cleared height of climb is (900), (600) for WT 32D SID.
3. Further climb is by ATIS unit instruction.
4. All ACFT shall follow the noise abatement procedures at all times as in accordance with ICAO DOC 8168.
5. A procedure of simultaneous departures is AVBL.