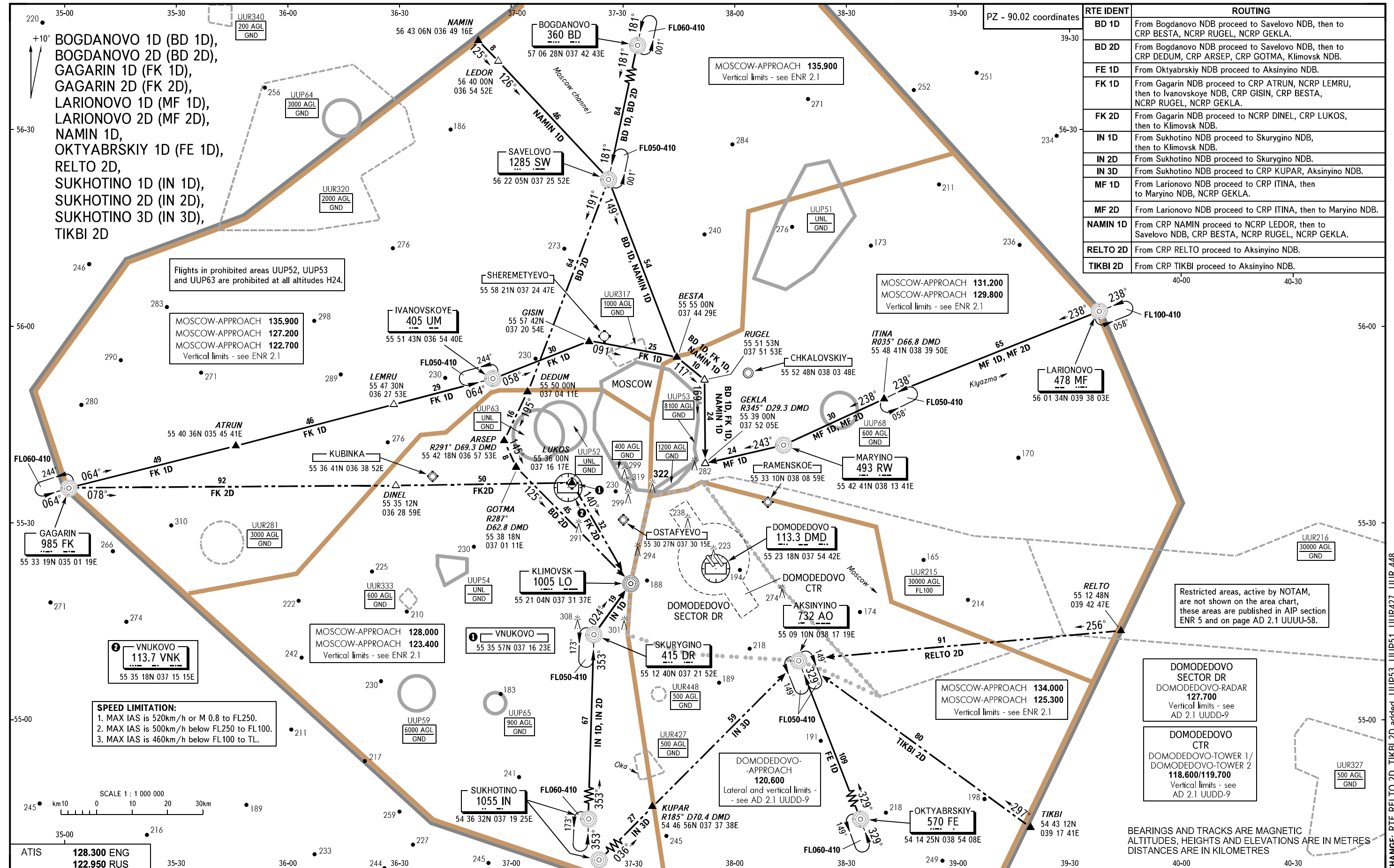


MOSCOW, RUSSIA  
DOMODEDOVO  
ARRIVAL

AREA CHART - ICAO

ARRIVAL ROUTES



| RTE IDENT | ROUTING   |
|-----------|---|
| BD 1D     | From Bogdanovo NDB proceed to Savelovo NDB, then to CRP BESTA, NCRP RUGEL, NCRP GEKLA.                                    |
| BD 2D     | From Bogdanovo NDB proceed to Savelovo NDB, then to CRP DEDUM, CRP ARSEP, CRP GOTMA, Klimovsk NDB.                        |
| FE 1D     | From Oktyabrskiy NDB proceed to Aksinyino NDB.  |
| FK 1D     | From Gagarin NDB proceed to CRP ATRUN, NCRP LEMRU, then to Ivanovskoye NDB, CRP GISIN, CRP BESTA, NCRP RUGEL, NCRP GEKLA. |
| FK 2D     | From Gagarin NDB proceed to NCRP DINEL, CRP LUKOS, then to Klimovsk NDB.  |
| IN 1D     | From Sukhotino NDB proceed to Skurygino NDB, then to Klimovsk NDB.  |
| IN 2D     | From Sukhotino NDB proceed to Skurygino NDB.  |
| IN 3D     | From Sukhotino NDB proceed to CRP KUPAR, Aksinyino NDB.   |
| MF 1D     | From Larionovo NDB proceed to CRP ITINA, then to Maryino NDB, NCRP GEKLA.   |
| MF 2D     | From Larionovo NDB proceed to CRP ITINA, then to Maryino NDB.   |
| NAMIN 1D  | From CRP NAMIN proceed to NCRP LEDOR, then to Savelovo NDB, CRP BESTA, NCRP RUGEL, NCRP GEKLA.                            |
| RELT 2D   | From CRP RELTO proceed to Aksinyino NDB.  |
| TIKBI 2D  | From CRP TIKBI proceed to Aksinyino NDB.  |

BOGDANOVO 1D (BD 1D),  
BOGDANOVO 2D (BD 2D),  
GAGARIN 1D (FK 1D),  
GAGARIN 2D (FK 2D),  
LARIONOVO 1D (MF 1D),  
LARIONOVO 2D (MF 2D),  
NAMIN 1D,  
OKTYABRSKIY 1D (FE 1D),  
RELTO 2D,  
SUKHOTINO 1D (IN 1D),  
SUKHOTINO 2D (IN 2D),  
SUKHOTINO 3D (IN 3D),  
TIKBI 2D

Flights in prohibited areas UUP52, UUP53 and UUP63 are prohibited at all altitudes H24.

MOSCOW-APPROACH 135.900  
MOSCOW-APPROACH 127.200  
MOSCOW-APPROACH 122.700  
Vertical limits - see ENR 2.1

**SPEED LIMITATION:**  
1. MAX IAS is 520km/h or M 0.8 to FL250.  
2. MAX IAS is 500km/h below FL250 to FL100.  
3. MAX IAS is 460km/h below FL100 to TL.

SCALE 1 : 1 000 000  
0 10 20 30km

ATIS 128.300 ENG  
122.950 RUS

Restricted areas, active by NOTAM, are not shown on the area chart, these areas are published in AIP section ENR 5 and on page AD 2.1 UUUU-58.

DOMODEDOVO SECTOR DR  
DOMODEDOVO-RADAR  
127.700  
Vertical limits - see AD 2.1 UDD-9

DOMODEDOVO CTR  
DOMODEDOVO-TOWER 1/  
DOMODEDOVO-TOWER 2  
118.600/119.700  
Vertical limits - see AD 2.1 UDD-9

BEARINGS AND TRACKS ARE MAGNETIC  
ALTITUDES, HEIGHTS AND ELEVATIONS ARE IN METRES  
DISTANCES ARE IN KILOMETRES

CHANGE: RTE RELTO 2D, TIKBI 2D added, UUP51, UUR427, UUR 448