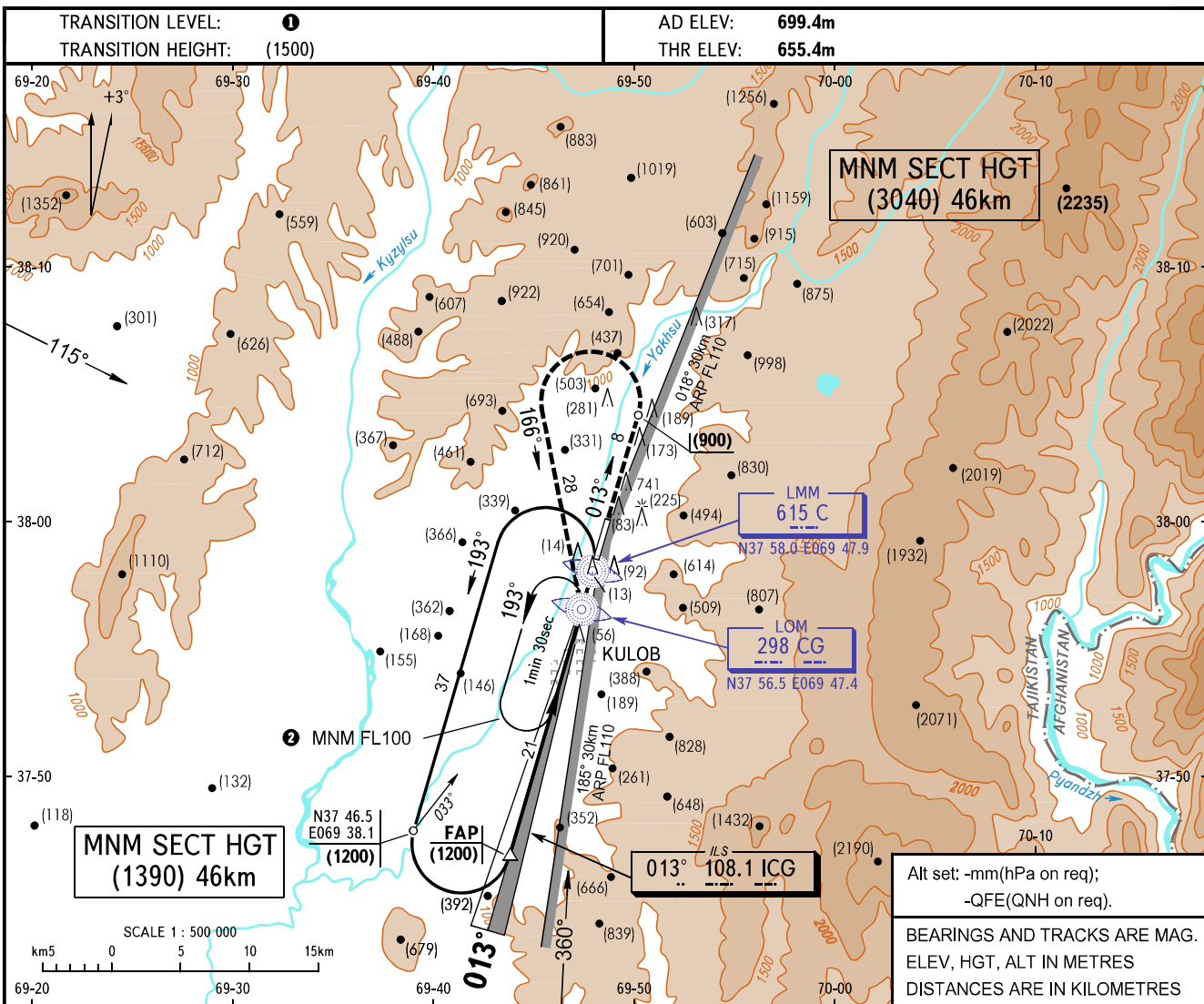


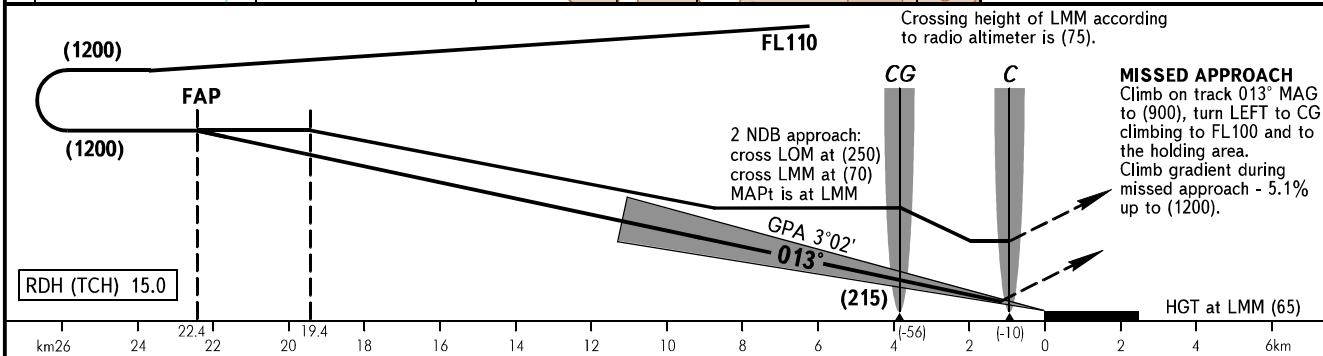
**INSTRUMENT  
APPROACH  
CHART - ICAO**

TOWER **118.5**

**KULOB, TAJIKISTAN  
KULOB  
ILS, 2 NDB RWY 01**



Alt set: -mm(hPa on req);  
-QFE(QNH on req).  
BEARINGS AND TRACKS ARE MAG.  
ELEV, HGT, ALT IN METRES  
DISTANCES ARE IN KILOMETRES



OCA/H		A	B	C	D
Straight-in Approach	ILS			730(75)	735(80)
	2 NDB	785(130)	785(130)	785(130)	785(130)

**1** TRANSITION LEVEL:  
- FL090 at atmospheric pressure above 678mm mercury column;  
- FL100 at atmospheric pressure below 678mm mercury column.  
**2** Turns to be executed at IAS not more than 400 km/h with a bank angle 25°.

GROUND SPEED	km/h	150	180	210	240	270	300	330	360	390	420	450
LOM-THR 3830m	min:sec	1.32	1.17	1.06	0.57	0.51	0.46	0.42	0.38	0.35	0.33	0.31
RATE OF DESCENT (Grad 5.8%)	m/s	2.6	3.1	3.6	4.1	4.6	5.1	5.6	6.2	6.7	7.1	7.6