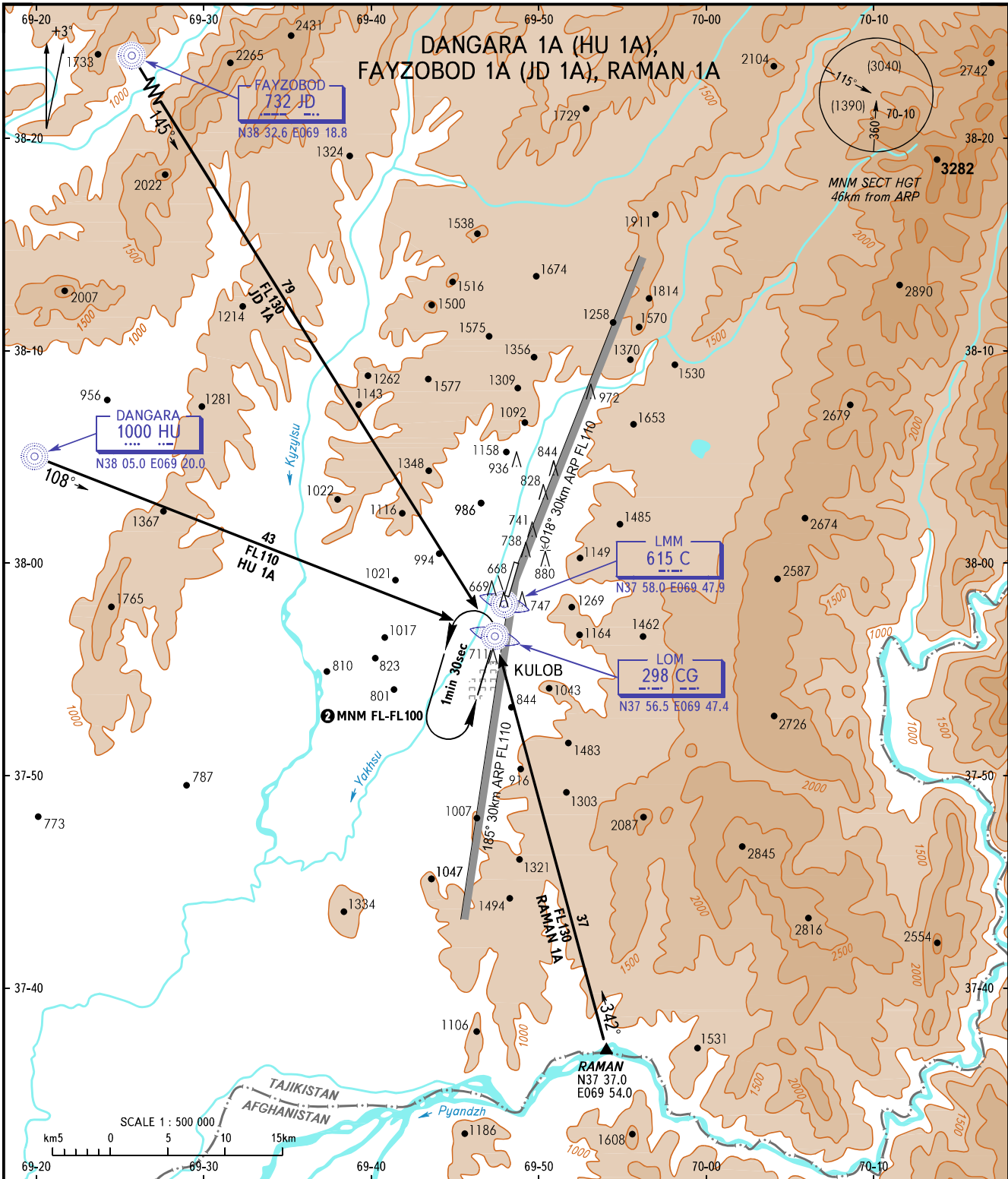


STANDARD ARRIVAL CHART  
INSTRUMENT (STAR) - ICAO

KULOB, TAJIKISTAN  
KULOB  
RWY 01

TRANSITION  
LEVEL : ①



- ① **TRANSITION LEVEL:**  
- FL090 at atmospheric pressure above 678mm mercury column;  
- FL100 at atmospheric pressure below 678mm mercury column.
- ② Turns to be executed at IAS not more than 400km/h with a bank angle 25°.

**WARNING:**

1. During radio communication failure ACFT shall maintain the last assigned FL (but not below the safe FL) proceeding to LOM CG. Join the holding pattern over LOM CG and reach the FL for the beginning of approach-to-land manoeuvre. After crossing LOM CG ACFT shall begin descending for approach-to-land according to the established pattern.
2. Crossing altitudes for exit points of airway are as directed by ATC unit.

BEARINGS AND TRACKS ARE MAGNETIC  
ALTITUDES, HEIGHTS AND ELEVATIONS ARE IN METRES  
DISTANCES ARE IN KILOMETRES