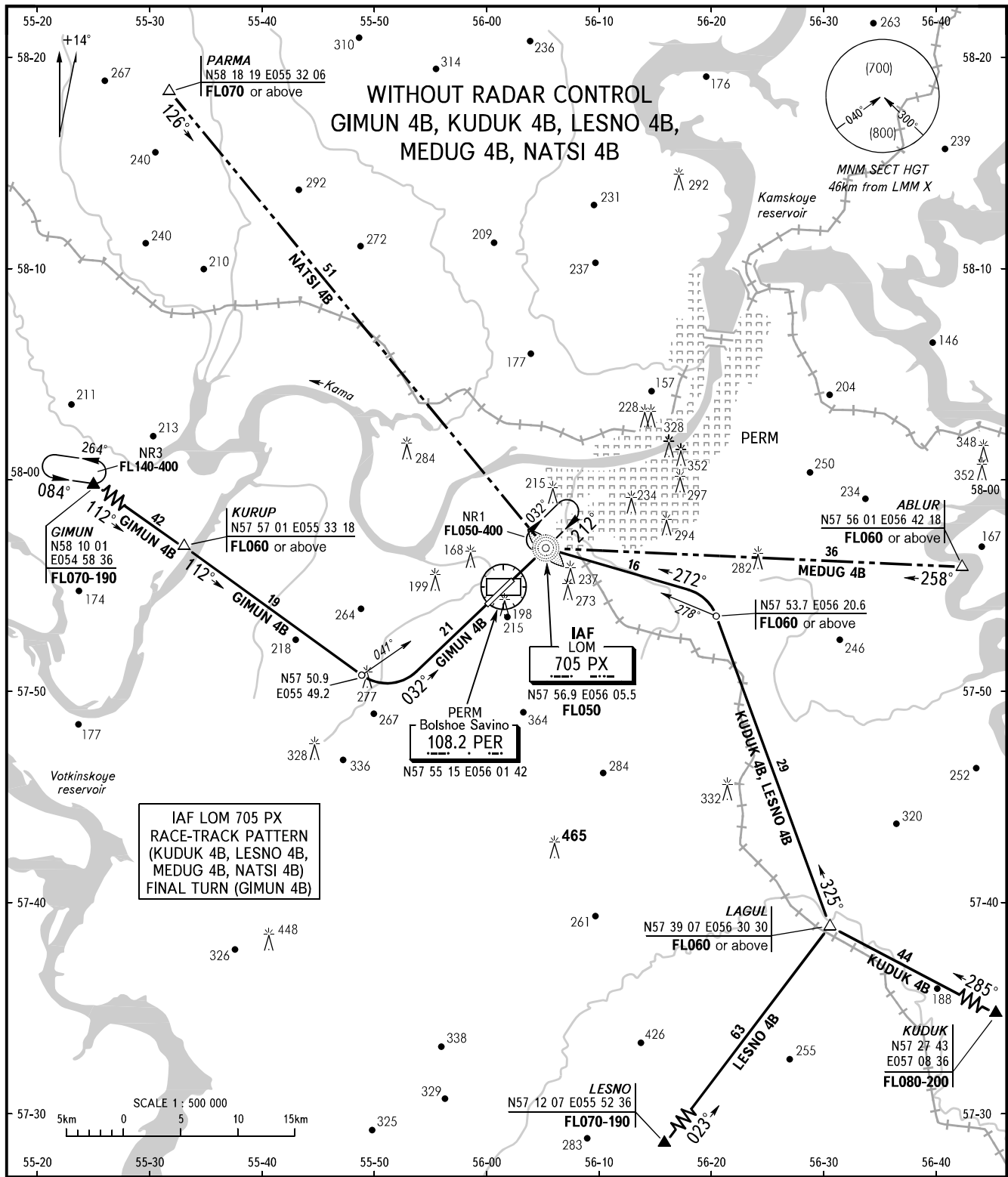


STANDARD ARRIVAL CHART  
INSTRUMENT (STAR) - ICAO

PERM, RUSSIA  
BOLSHOE SAVINO  
RWY 21

TRANSITION  
LEVEL : **1**



IAF LOM 705 PX  
RACE-TRACK PATTERN  
(KUDUK 4B, LESNO 4B,  
MEDUG 4B, NATSI 4B)  
FINAL TURN (GIMUN 4B)

APPROACH (Additionally serves as RADAR) **127.1**  
START (Additionally serves as TOWER and TAXIING) **124.0**

- 1** TRANSITION LEVEL:
- FL050 when atmospheric pressure is 749mm mercury column or above;
  - FL060 when atmospheric pressure is less than 749mm and is 722mm or above;
  - FL070 when atmospheric pressure is less than 722mm mercury column.

- WARNING:**
1. Traffic circuit width is 15km for simultaneous flights in area NR1 (over LMM).
  2. Out-of-sequence approach shall be carried out according to the rectangular approach pattern 8km wide or from base turn on outbound track descending and establishing on landing track.

BEARINGS AND TRACKS ARE MAGNETIC  
ALTITUDES, HEIGHTS AND ELEVATIONS ARE IN METRES  
DISTANCES ARE IN KILOMETRES

CHANGE: VORDME, STAR GIMUN 4B