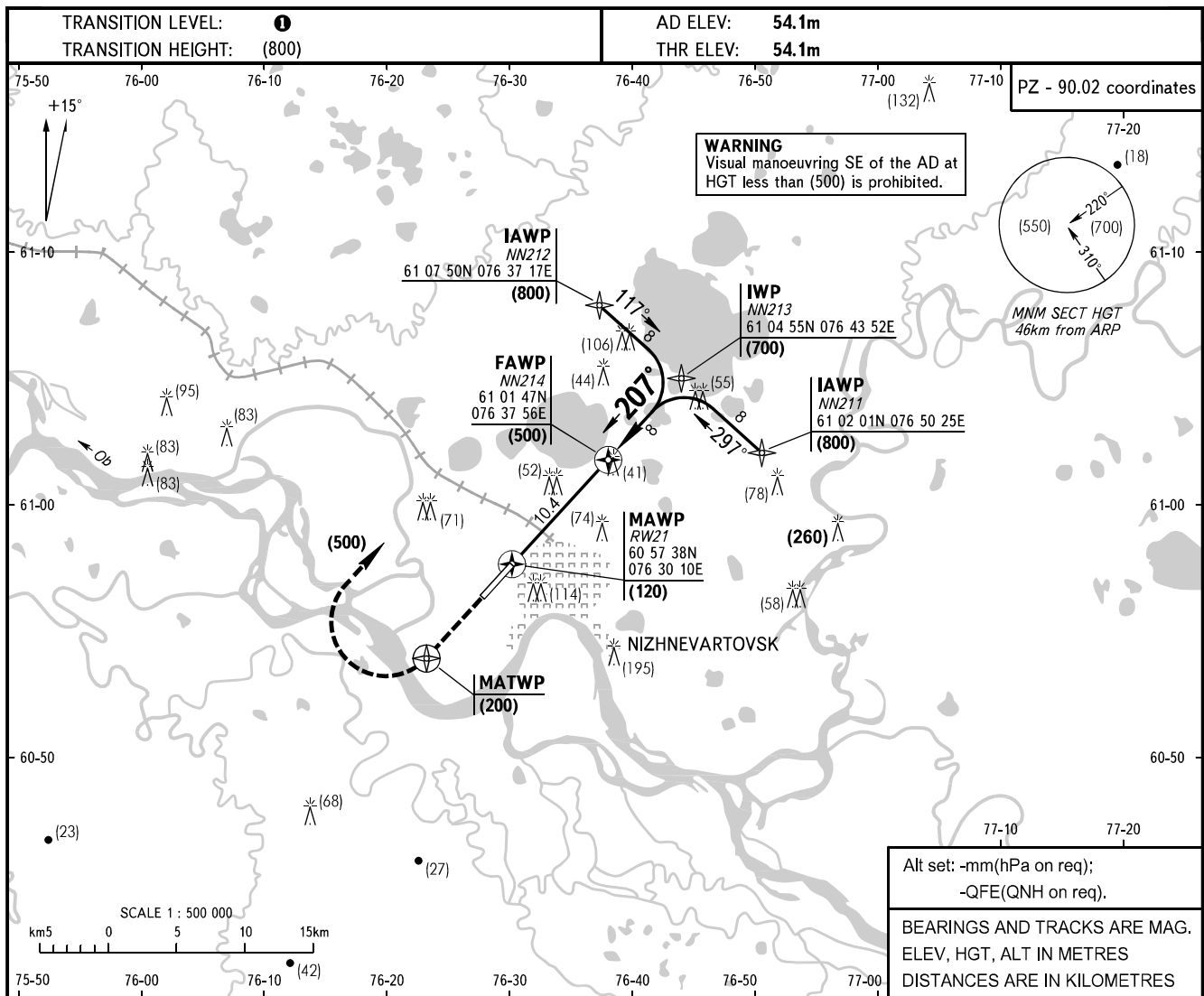


**INSTRUMENT
APPROACH
CHART - ICAO**

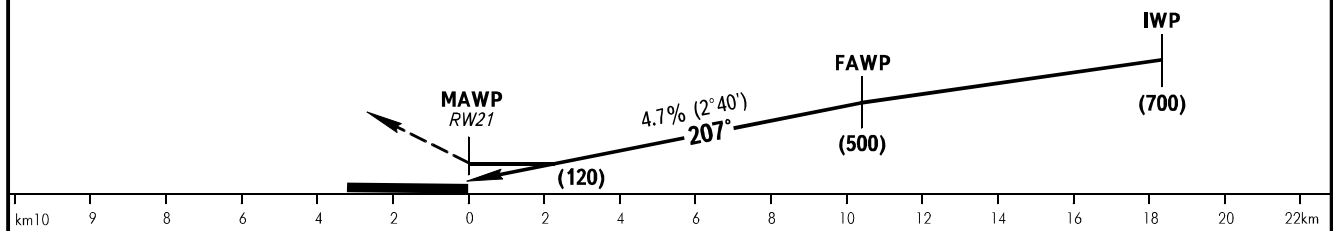
RADAR **120.400**
TOWER **118.100**

NIZHNEVARTOVSK, RUSSIA
NIZHNEVARTOVSK
RNAV (GNSS) RWY 21



MISSED APPROACH
Climb on track 207° to (200), then turn RIGHT to proceed to NN212 climbing to (500), then according to chart.

THR DISTANCE	10	9	8	7	6	5	4	3	2	1
ALT	525	480	435	385	340	300	245	200	155	105
HAT	(480)	(435)	(390)	(340)	(295)	(250)	(200)	(155)	(110)	(65)



OCA/H		A	B	C	D
Straight-in-Approach	CNSS	171(117)	171(117)	171(117)	171(117)
	MDA/H	216(162)	259(205)	289(235)	289(235)
Circle-to-land	CLD base, m	500	500	500	500
	VIS, m	3000	3000	3000	4000
	Circling radius	3120	5480	7850	9760

1 TRANSITION LEVEL:
- FL040 when atmospheric pressure is 755mm mercury column or above.
- FL050 when atmospheric pressure is 728mm or above but is less than 755mm.
- FL060 when atmospheric pressure is less than 728mm.

GROUND SPEED	km/h	150	180	210	240	270	300	330	360	390	420	450
FAWT-MAWP 10400m	min:sec	Timing not authorized for defining the MAWP.										
RATE OF DESCENT	m/s	2.0	2.3	2.8	3.2	3.5	4.0	4.3	4.8	5.1	5.4	5.9

CHANGE: ELEV, COORD