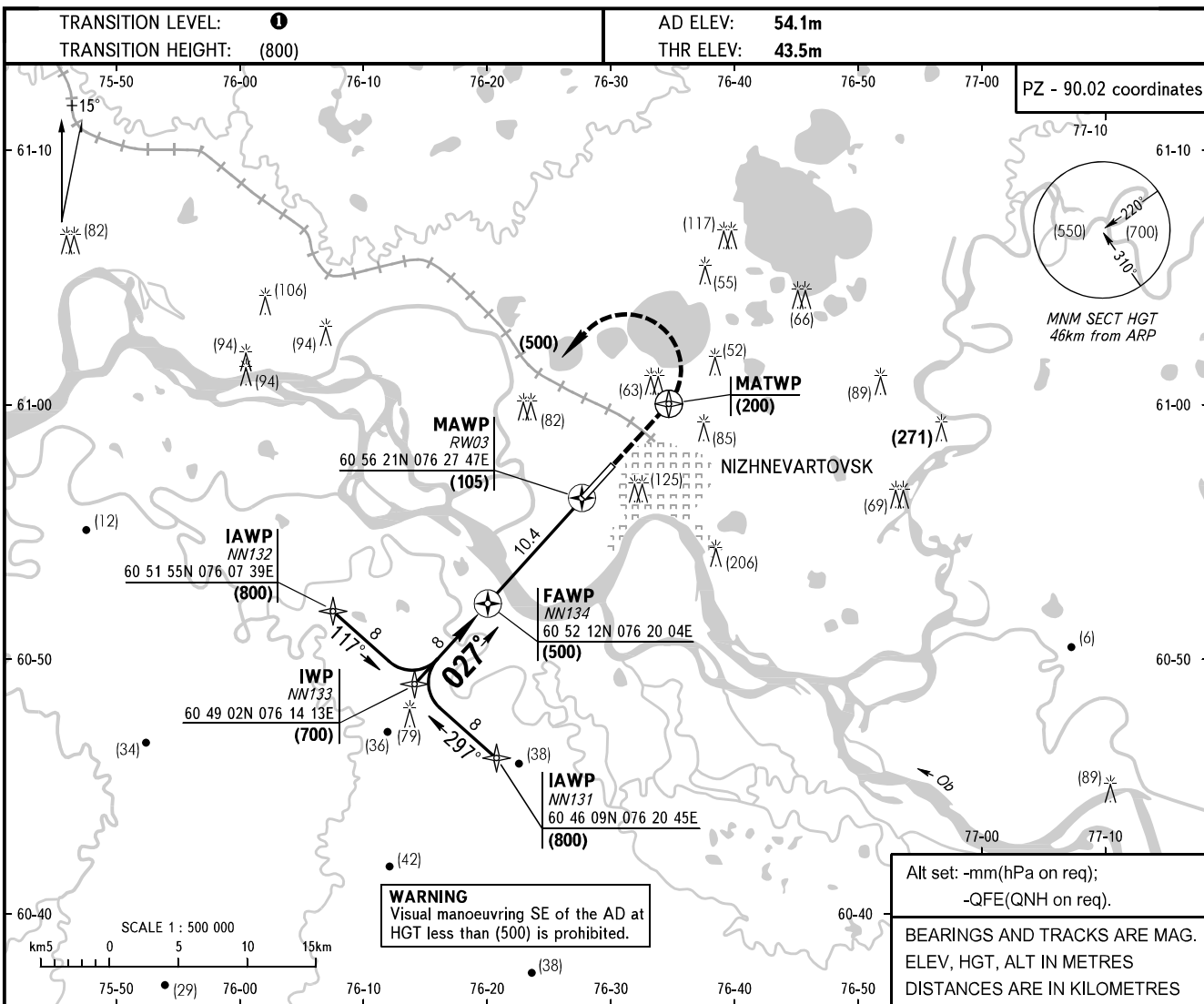


**INSTRUMENT
APPROACH
CHART - ICAO**

**NIZHNEVARTOVSK, RUSSIA
NIZHNEVARTOVSK
RNAV (GNSS) RWY 03**

RADAR	120.400
TOWER	118.100

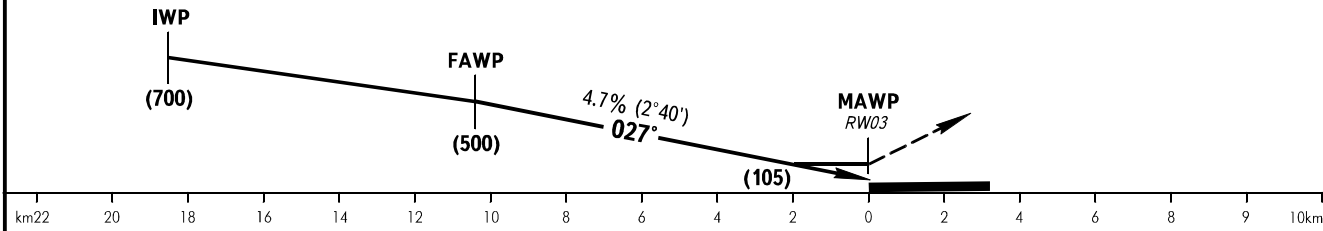


THR DISTANCE	10	9	8	7	6	5	4	3	2	1
ALT	525	480	435	385	340	300	245	200	155	105
HAT	(480)	(435)	(390)	(340)	(295)	(250)	(200)	(155)	(110)	(65)

Alt set: -mm(hPa on req);
-QFE(QNH on req).

BEARINGS AND TRACKS ARE MAG.
ELEV, HGT, ALT IN METRES
DISTANCES ARE IN KILOMETRES

MISSED APPROACH
Climb on track 027° to (200), then turn LEFT to proceed to NN132 climbing to (500), then according to chart.



		OCA/H				A	B	C	D				
Straight-in-Approach	CNSS	148(104)	148(104)	148(104)	148(104)								
	MDA/H	216(162)	259(205)	289(235)	289(235)								
Circle-to-land	CLD base, m	500	500	500	500								
	VIS, m	3000	3000	3000	4000								
	Circling radius	3120	5480	7850	9760								
GROUND SPEED		km/h	150	180	210	240	270	300	330	360	390	420	450
FAWT-MAWP 10400m		min:sec	Timing not authorized for defining the MAWP.										
RATE OF DESCENT		m/s	2.0	2.3	2.8	3.2	3.5	4.0	4.3	4.8	5.1	5.4	5.9

TRANSITION LEVEL:

- FL040 when atmospheric pressure is 756mm mercury column or above.
- FL050 when atmospheric pressure is 729mm or above but is less than 756mm.
- FL060 when atmospheric pressure is less than 729mm.