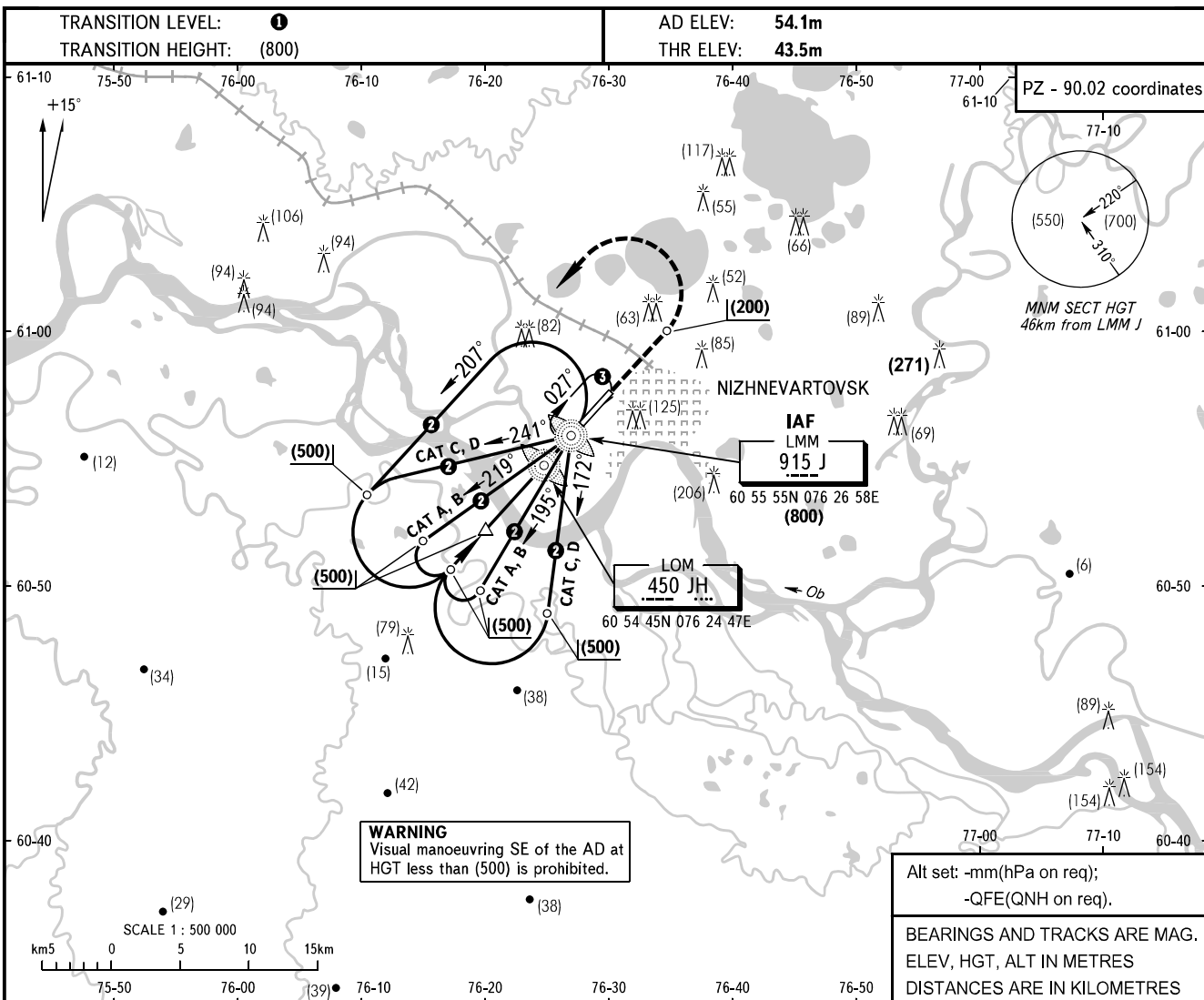


**INSTRUMENT
APPROACH
CHART - ICAO**

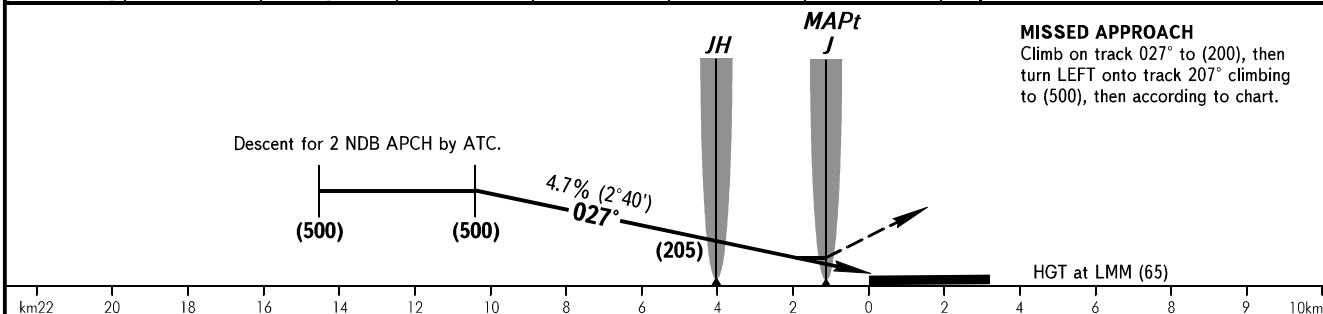
RADAR	120.400
TOWER	118.100

NIZHNEVARTOVSK, RUSSIA
NIZHNEVARTOVSK
2 NDB RWY 03



Alt set: -mm(hPa on req);
-QFE(QNH on req).

BEARINGS AND TRACKS ARE MAG.
ELEV, HGT, ALT IN METRES
DISTANCES ARE IN KILOMETRES



OCA/H		A	B	C	D	
Straight-in Approach	2 NDB	148(104)	148(104)	148(104)	148(104)	
	NDB (LMM)	With FAF	150(105)	150(105)	150(105)	150(105)
		WO FAF	215(170)	215(170)	215(170)	215(170)
Circle-to-land	MDA/H	216(162)	259(205)	289(235)	289(235)	
	CLD base, m	500	500	500	500	
	VIS, m	3000	3000	3000	4000	
	Circling radius	3120	5480	7850	9760	

- ① **TRANSITION LEVEL:**
 - FL040 when atmospheric pressure is 756mm mercury column or above.
 - FL050 when atmospheric pressure is 729mm or above but is less than 756mm.
 - FL060 when atmospheric pressure is less than 729mm.
- ② **OUTBOUND TRACK:**
CAT A, B - 2min 30sec; CAT C, D - 1min 30sec.
- ③ 1min, FL040-100

GROUND SPEED	km/h	150	180	210	240	270	300	330	360	390	420	450
Timing not authorized for defining the MAPt.												
RATE OF DESCENT	m/s	2.0	2.3	2.8	3.2	3.5	4.0	4.3	4.8	5.1	5.4	5.9

CHANGE: ELEV, COORD, OCA/H