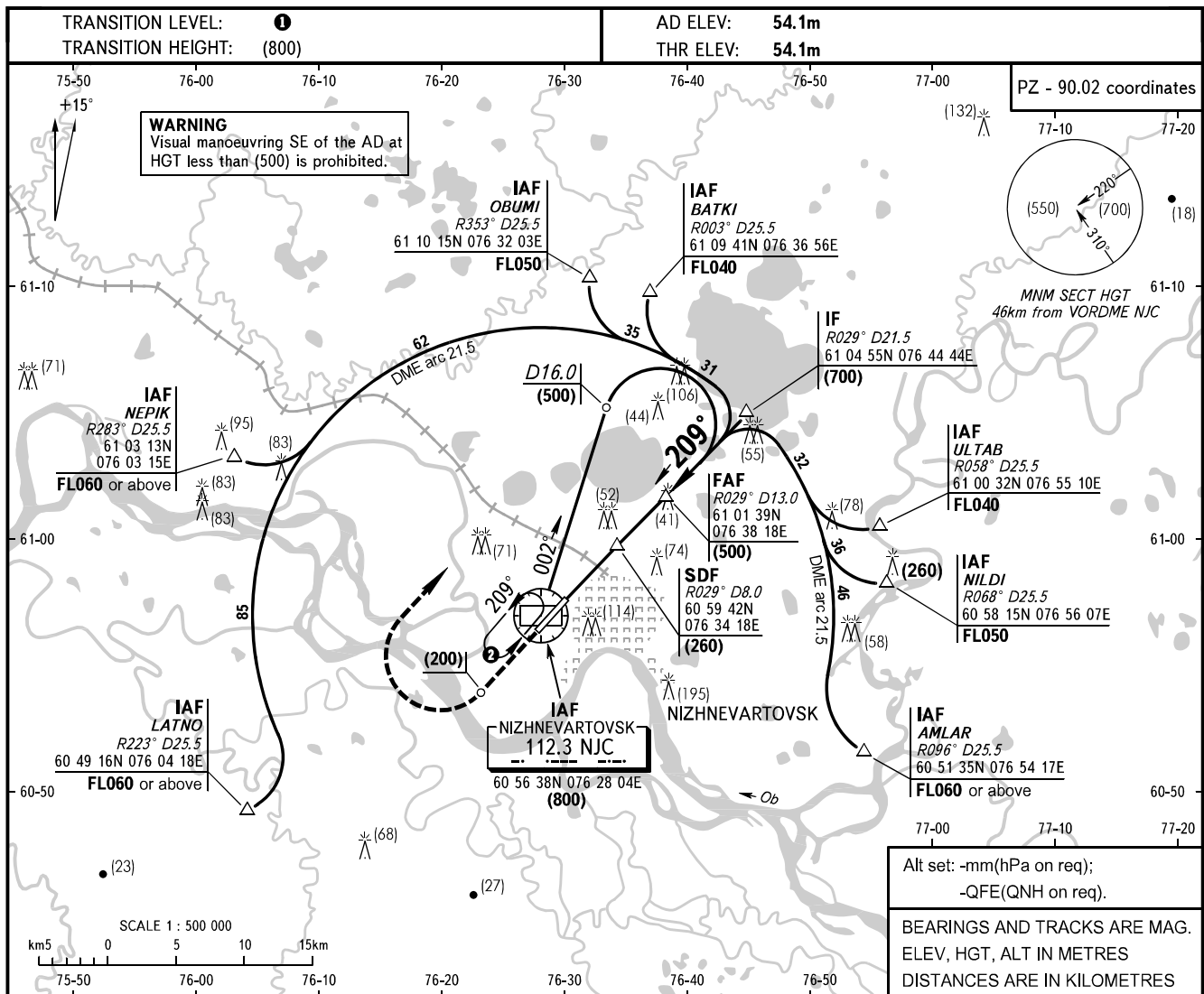


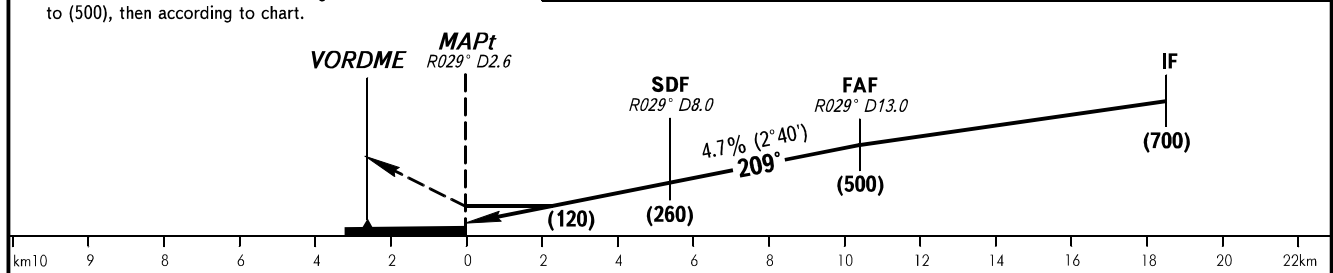
**INSTRUMENT
APPROACH
CHART - ICAO**

APPROACH TOWER **134.300**
118.100

NIZHNEVARTOVSK, RUSSIA
NIZHNEVARTOVSK
VORDME RWY 21



MISSED APPROACH Climb on track 209° to (200), then turn RIGHT onto track 029° climbing to (500), then according to chart.	THR DISTANCE	10	9	8	7	6	5	4	3	2	1
	DME NJC	12.6	11.6	10.6	9.6	8.6	7.6	6.6	5.6	4.6	3.6
	HAT	(480)	(435)	(390)	(340)	(295)	(250)	(200)	(155)	(110)	(65)



OCA/H		A	B	C	D	1 TRANSITION LEVEL: - FL040 when atmospheric pressure is 755mm mercury column or above. - FL050 when atmospheric pressure is 728mm or above but is less than 755mm. - FL060 when atmospheric pressure is less than 728mm. 2 1min, FL040-100									
Straight-in-Approach	VORDME	171(117)	171(117)	171(117)	171(117)										
	MDA/H	216(162)	259(205)	289(235)	289(235)										
Circle-to-land	CLD base, m	500	500	500	500										
	VIS, m	3000	3000	3000	4000										
	Circling radius	3120	5480	7850	9760										
GROUND SPEED	km/h	150	180	210	240	270	300	330	360	390	420	450			
FAF-MAPt 10400m	min:sec	Timing not authorized for defining the MAPt.													
RATE OF DESCENT	m/s	2.0	2.3	2.8	3.2	3.5	4.0	4.3	4.8	5.1	5.4	5.9			