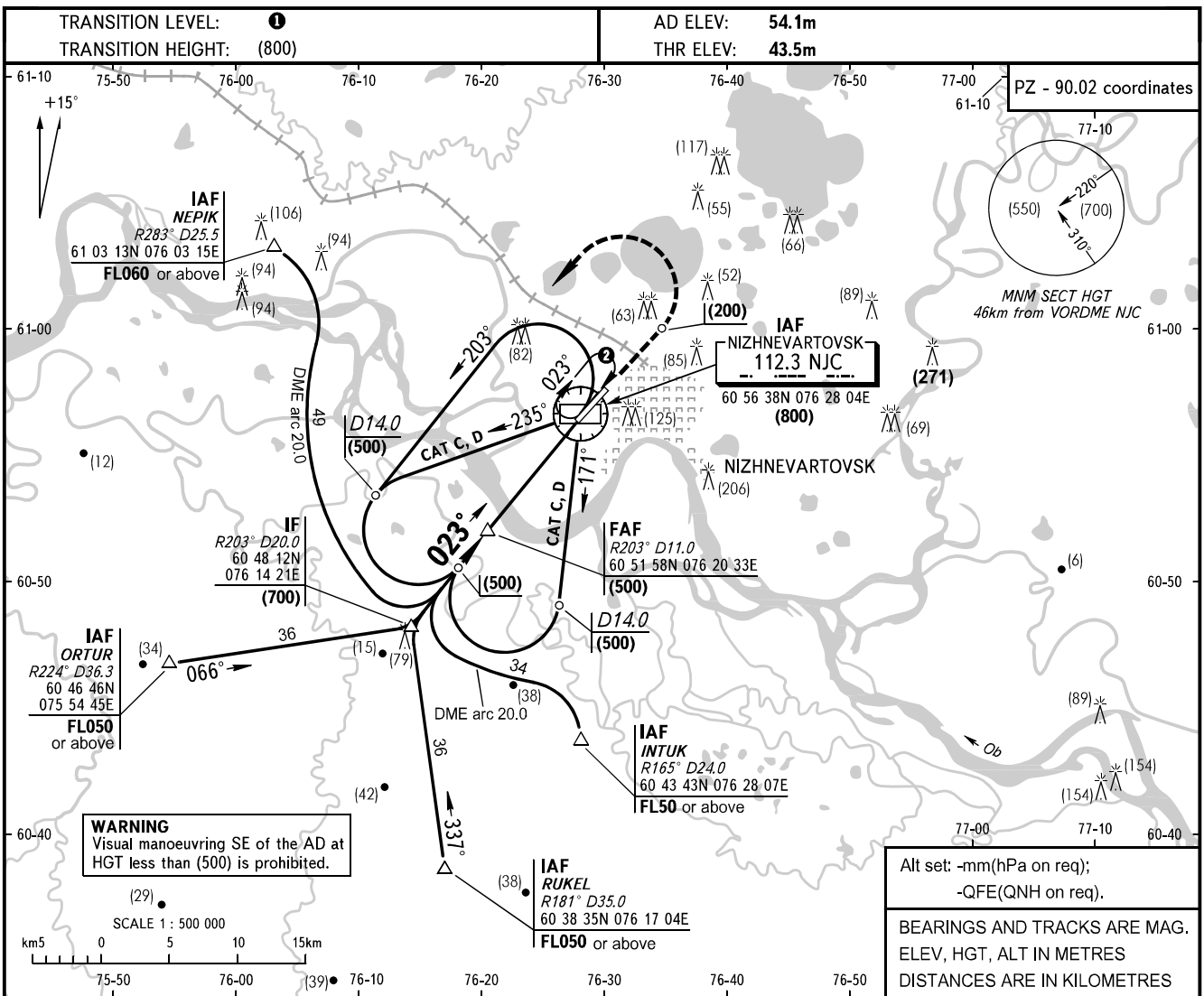


**INSTRUMENT
APPROACH
CHART - ICAO**

RADAR	120.400
TOWER	118.100

**NIZHNEVARTOVSK, RUSSIA
NIZHNEVARTOVSK
VORDME RWY 03**

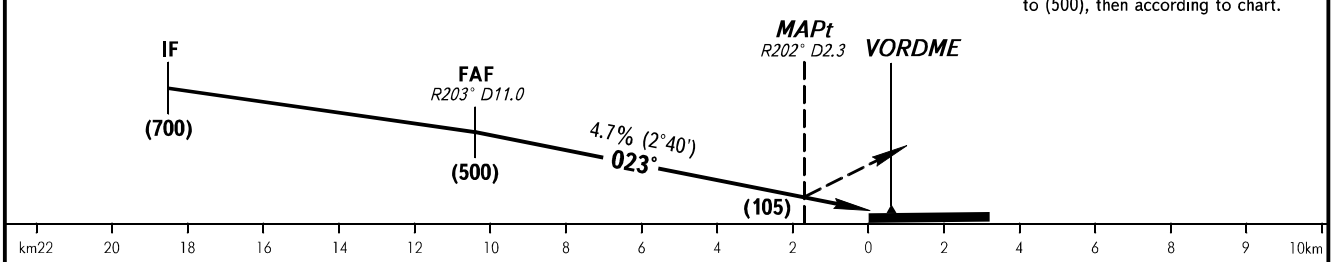


THR DISTANCE	10	9	8	7	6	5	4	3	2	1
DME NJC	10.6	9.6	8.6	7.6	6.6	5.6	4.6	3.6	2.6	1.6
HAT	(480)	(435)	(390)	(340)	(295)	(250)	(200)	(155)	(110)	(65)

Alt set: -mm(hPa on req);
-QFE(QNH on req).

BEARINGS AND TRACKS ARE MAG.
ELEV, HGT, ALT IN METRES
DISTANCES ARE IN KILOMETRES

MISSED APPROACH
Climb on track 023° to (200), then turn LEFT onto track 203° climbing to (500), then according to chart.



OCA/H		A	B	C	D
Straight-in-Approach	VORDME	148(104)	148(104)	148(104)	148(104)
	MDA/H	216(162)	259(205)	289(235)	289(235)
Circle-to-land	CLD base, m	500	500	500	500
	VIS, m	3000	3000	3000	4000
	Circling radius	3120	5480	7850	9760

- 1 TRANSITION LEVEL:
- FL040 when atmospheric pressure is 756mm mercury column or above.
- FL050 when atmospheric pressure is 729mm or above but is less than 756mm.
- FL060 when atmospheric pressure is less than 729mm.
- 2 1min, FL040-100

GROUND SPEED	km/h	150	180	210	240	270	300	330	360	390	420	450
FAF-MAPt 10400m	min:sec	Timing not authorized for defining the MAPt.										
RATE OF DESCENT	m/s	2.0	2.3	2.8	3.2	3.5	4.0	4.3	4.8	5.1	5.4	5.9

CHANGE: New chart