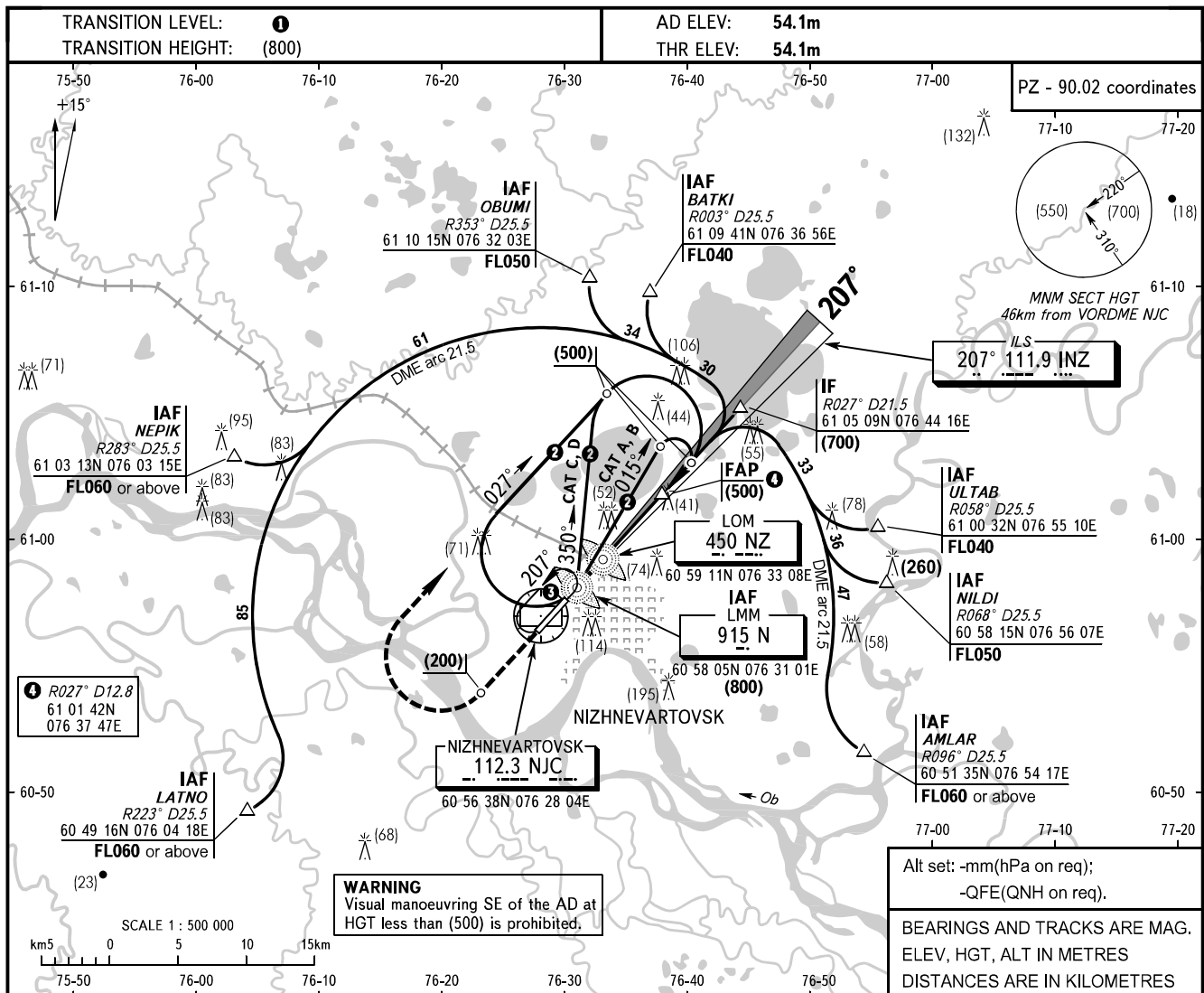


INSTRUMENT  
APPROACH  
CHART - ICAO

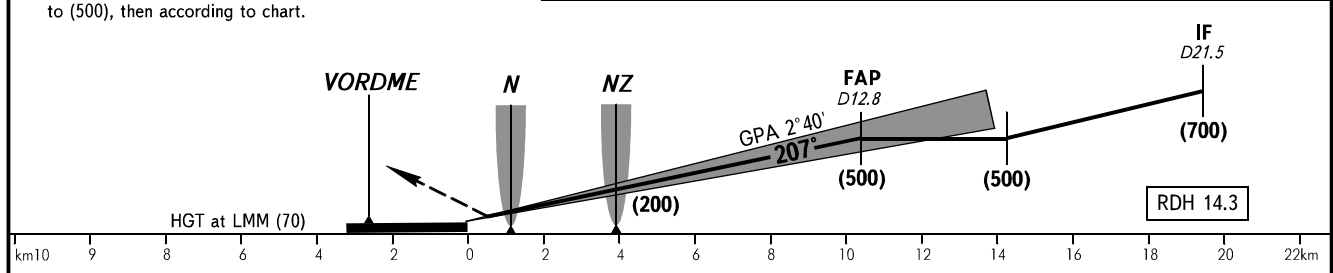
RADAR 120.400  
TOWER 118.100

NIZHNEVARTOVSK, RUSSIA  
NIZHNEVARTOVSK  
ILS RWY 21



**MISSED APPROACH**  
Climb on track 207° to (200), then turn RIGHT onto track 027° climbing to (500), then according to chart.

THR DISTANCE	10	9	8	7	6	5	4	3	2	1
DME NJC	12.6	11.6	10.6	9.6	8.6	7.6	6.6	5.6	4.6	3.6
HAT	(480)	(435)	(390)	(340)	(295)	(250)	(200)	(155)	(110)	(65)



OCA/H		A	B	C	D	<p><b>1</b> TRANSITION LEVEL: - FL040 when atmospheric pressure is 755mm mercury column or above. - FL050 when atmospheric pressure is 728mm or above but is less than 755mm. - FL060 when atmospheric pressure is less than 728mm.</p> <p><b>2</b> OUTBOUND TRACK: CAT A, B - 2min 30sec; CAT C, D - 1min 30sec.</p> <p><b>3</b> 1min, FL040-100</p>							
Straight-in-Approach		CAT I	105(51)	108(54)	111(57)						114(60)		
Circle-to-land		MDA/H	216(162)	259(205)	289(235)						289(235)		
		CLD base, m	500	500	500						500		
		VIS, m	3000	3000	3000						4000		
		Circling radius	3120	5480	7850	9760							
GROUND SPEED		km/h	150	180	210	240	270	300	330	360	390	420	450
		Timing not authorized for defining the MAPt.											
RATE OF DESCENT		m/s	2.0	2.3	2.8	3.2	3.5	4.0	4.3	4.8	5.1	5.4	5.9