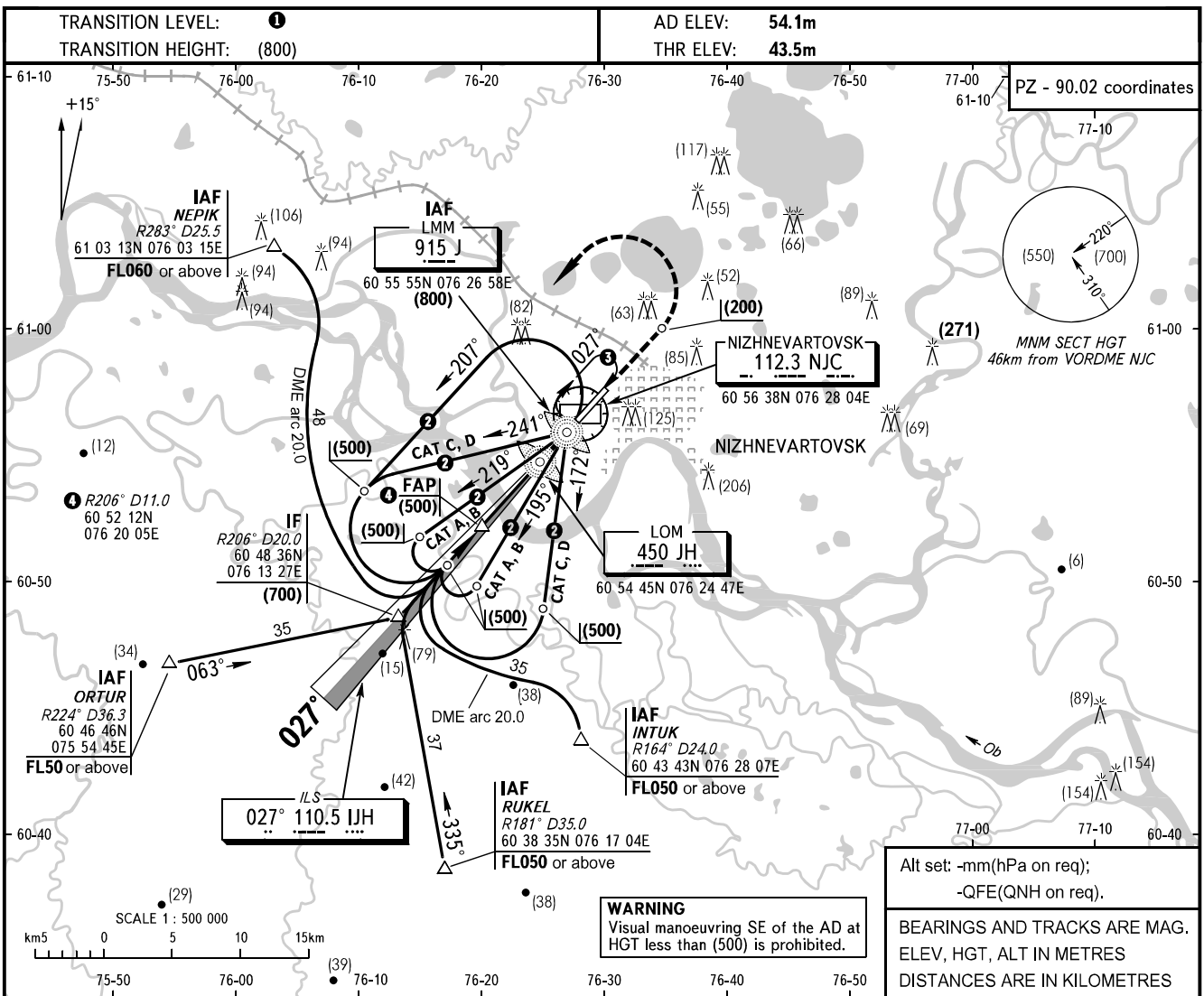


INSTRUMENT  
APPROACH  
CHART - ICAO

RADAR 120.400  
TOWER 118.100

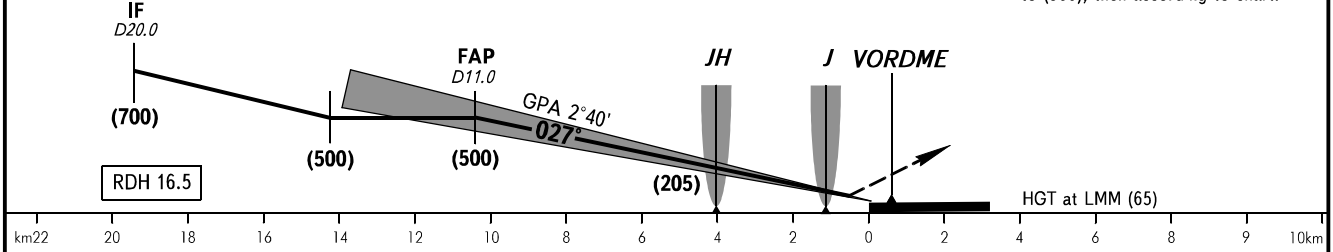
NIZHNEVARTOVSK, RUSSIA  
NIZHNEVARTOVSK  
ILS RWY 03



Alt set: -mm(hPa on req);  
-QFE(QNH on req).  
BEARINGS AND TRACKS ARE MAG.  
ELEV, HGT, ALT IN METRES  
DISTANCES ARE IN KILOMETRES

|              |       |       |       |       |       |       |       |       |       |      |
|--------------|-------|-------|-------|-------|-------|-------|-------|-------|-------|------|
| THR DISTANCE | 10    | 9     | 8     | 7     | 6     | 5     | 4     | 3     | 2     | 1    |
| DME NJC      | 10.6  | 9.6   | 8.6   | 7.6   | 6.6   | 5.6   | 4.6   | 3.6   | 2.6   | 1.6  |
| HAT          | (480) | (435) | (390) | (340) | (295) | (250) | (200) | (155) | (110) | (65) |

**MISSED APPROACH**  
Climb on track 027° to (200), then turn LEFT onto track 207° climbing to (500), then according to chart.



| OCA/H                |                 | A        | B        | C        | D        |
|----------------------|-----------------|----------|----------|----------|----------|
| Straight-in-Approach | CAT I           | 95(51)   | 98(54)   | 101(57)  | 104(60)  |
|                      | MDA/H           | 216(162) | 259(205) | 289(235) | 289(235) |
| Circle-to-land       | CLD base, m     | 500      | 500      | 500      | 500      |
|                      | VIS, m          | 3000     | 3000     | 3000     | 4000     |
|                      | Circling radius | 3120     | 5480     | 7850     | 9760     |

- 1 TRANSITION LEVEL:  
- FL040 when atmospheric pressure is 756mm mercury column or above.  
- FL050 when atmospheric pressure is 729mm or above but is less than 756mm.  
- FL060 when atmospheric pressure is less than 729mm.
- 2 OUTBOUND TRACK:  
CAT A, B - 2min 30sec; CAT C, D - 1min 30sec.
- 3 1min, FL040-100

|  |      |     |     |     |     |     |     |     |     |     |     |     |
|--|------|-----|-----|-----|-----|-----|-----|-----|-----|-----|-----|-----|
| GROUND SPEED                                 | km/h | 150 | 180 | 210 | 240 | 270 | 300 | 330 | 360 | 390 | 420 | 450 |
| Timing not authorized for defining the MAPt. |      |     |     |     |     |     |     |     |     |     |     |     |
| RATE OF DESCENT                              | m/s  | 2.0 | 2.3 | 2.8 | 3.2 | 3.5 | 4.0 | 4.3 | 4.8 | 5.1 | 5.4 | 5.9 |