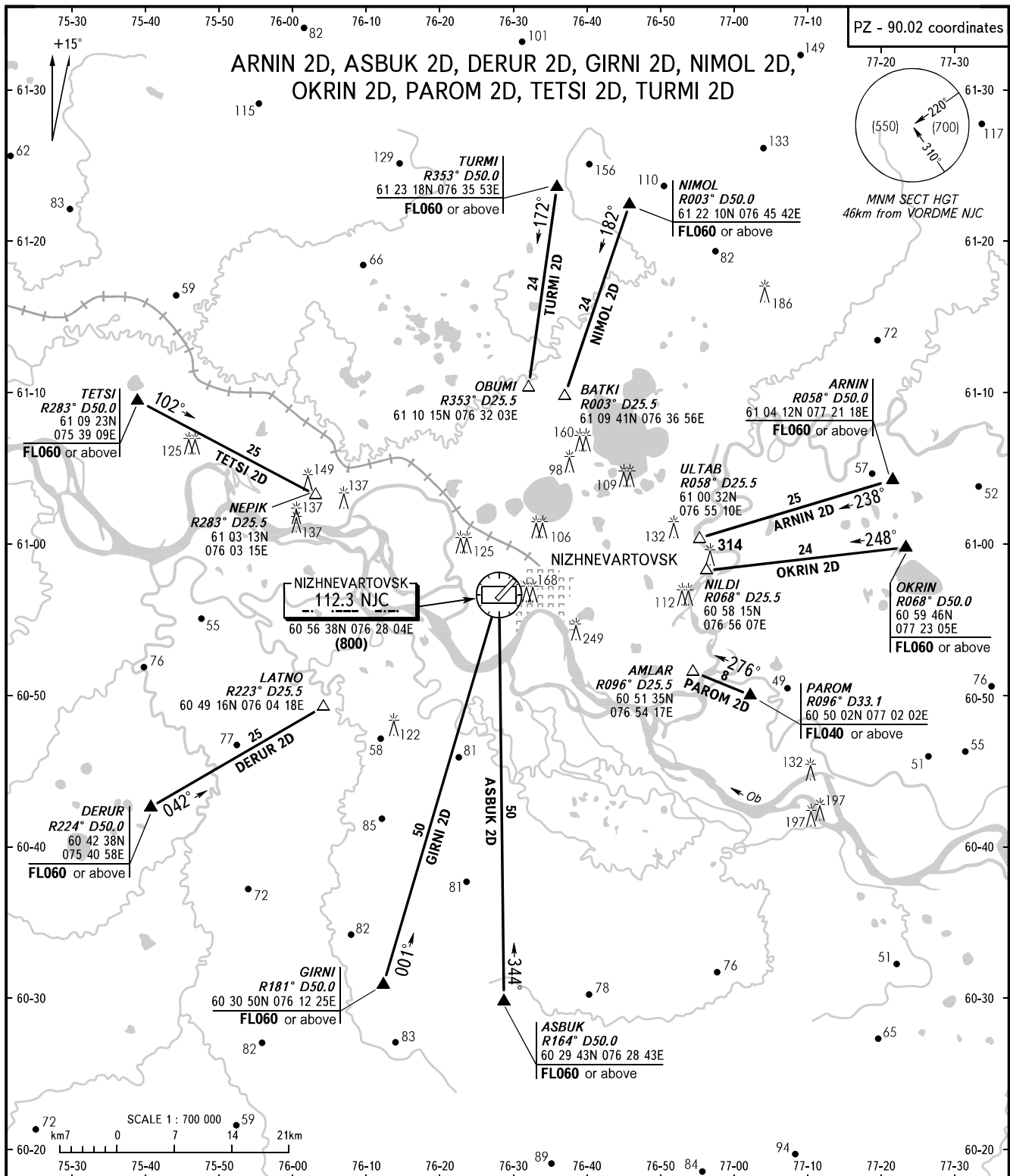


STANDARD ARRIVAL CHART  
INSTRUMENT (STAR) - ICAO

TRANSITION  
LEVEL : **1**



NIZHNEVARTOVSK TOWER **118.100**  
RADAR **120.400**

**1** TRANSITION LEVEL:  
- FL040 when atmospheric pressure is 755mm mercury column or above.  
- FL050 when atmospheric pressure is 728mm or above but is less than 755mm.  
- FL060 when atmospheric pressure is less than 728mm.

BEARINGS AND TRACKS ARE MAGNETIC  
ALTITUDES, HEIGHTS AND ELEVATIONS ARE IN METRES  
DISTANCES ARE IN KILOMETRES

CHANGE: ELEV