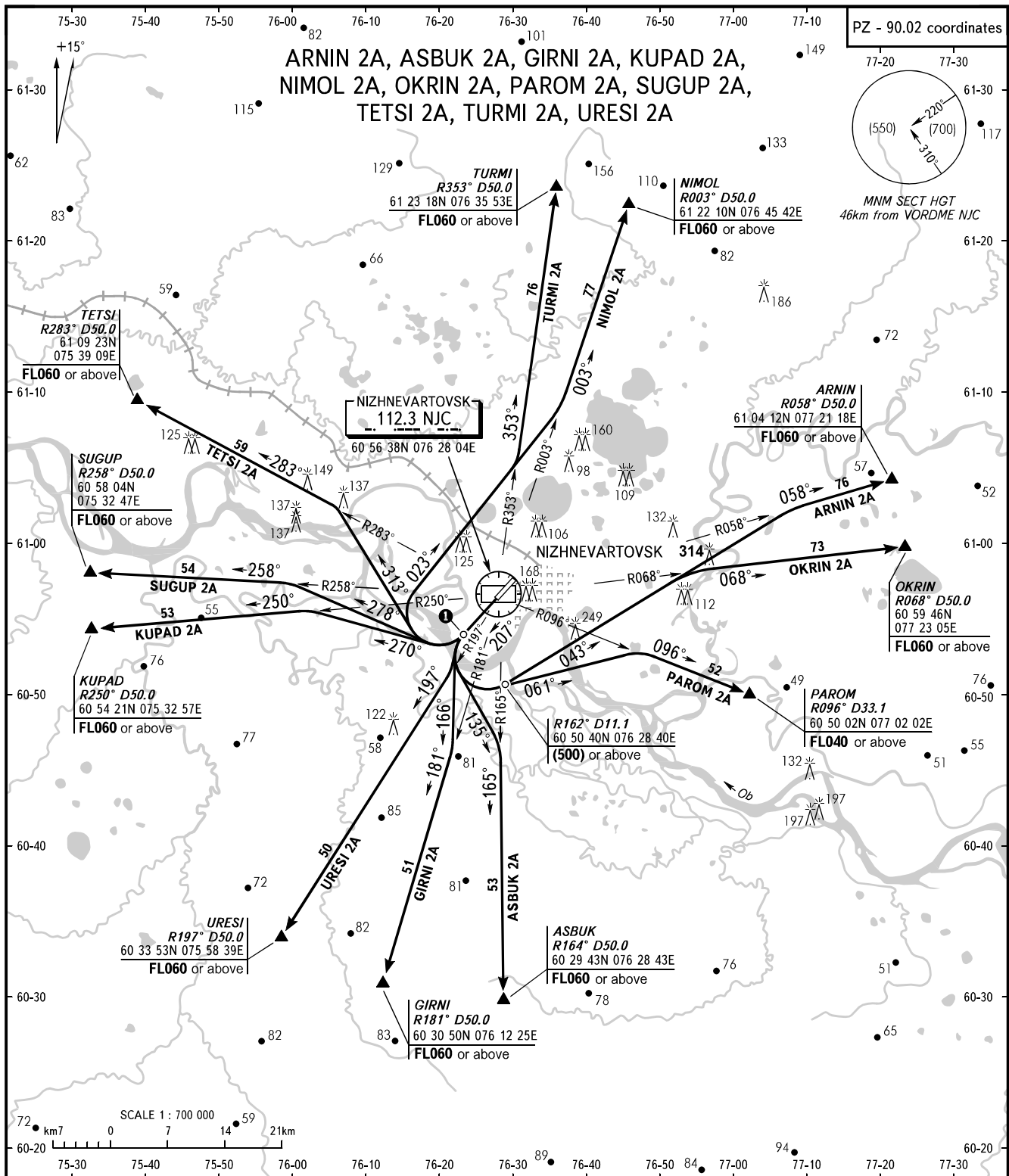


STANDARD DEPARTURE CHART
INSTRUMENT (SID) - ICAO

TRANSITION
HEIGHT : (800)

NIZHNEVARTOVSK, RUSSIA
NIZHNEVARTOVSK
RWY 21



NIZHNEVARTOVSK TOWER 118.100
RADAR 120.400

1 More than 1min or (200) whichever is later.

WARNING:

1. After climbing to (200) contact NIZHNEVARTOVSK-Radar on 120.400.
2. Initially cleared height of climb after take-off for all SID routes is (500).

BEARINGS AND TRACKS ARE MAGNETIC
ALTITUDES, HEIGHTS AND ELEVATIONS ARE IN METRES
DISTANCES ARE IN KILOMETRES