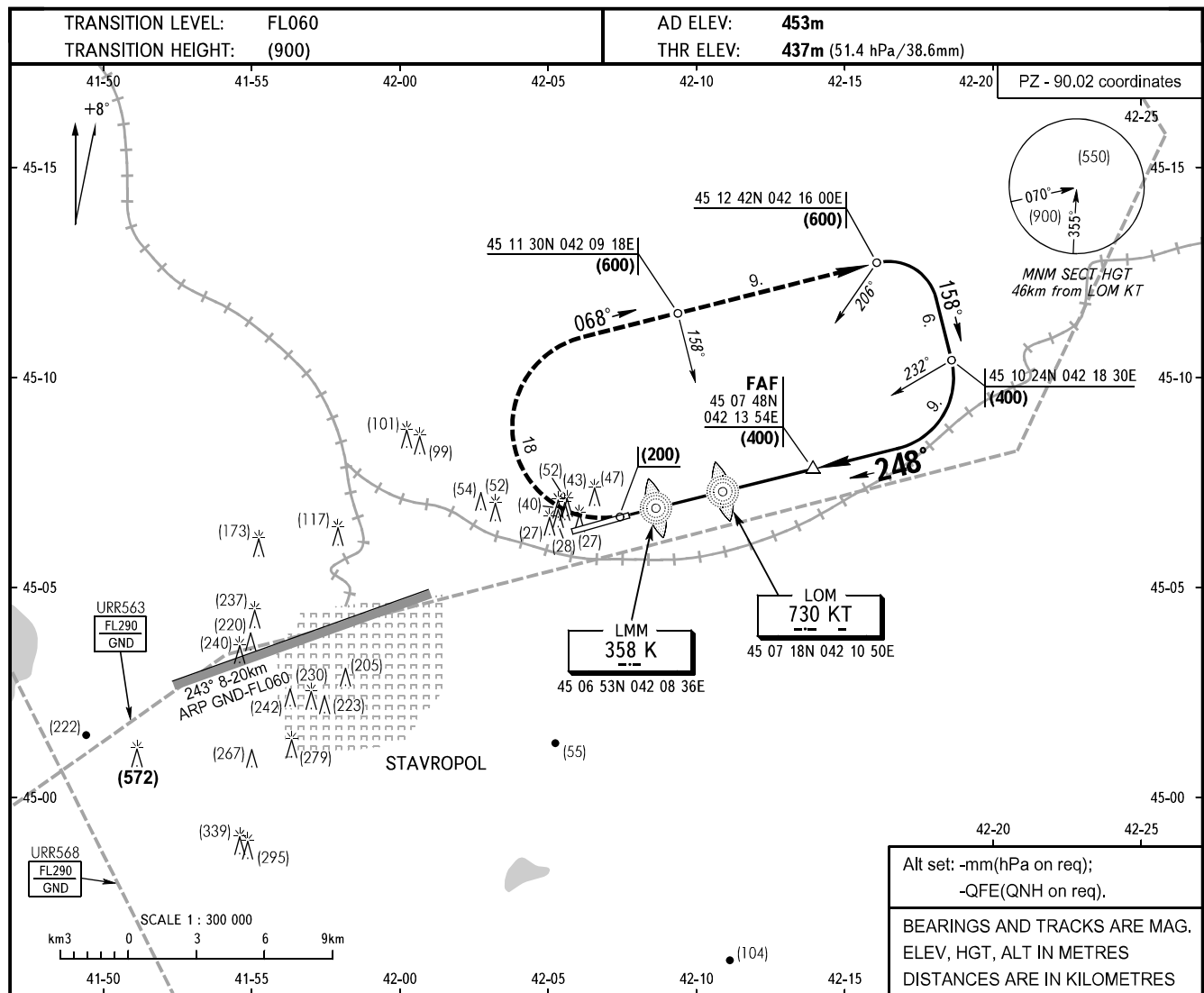


**INSTRUMENT
APPROACH
CHART - ICAO**

TOWER **120.900**

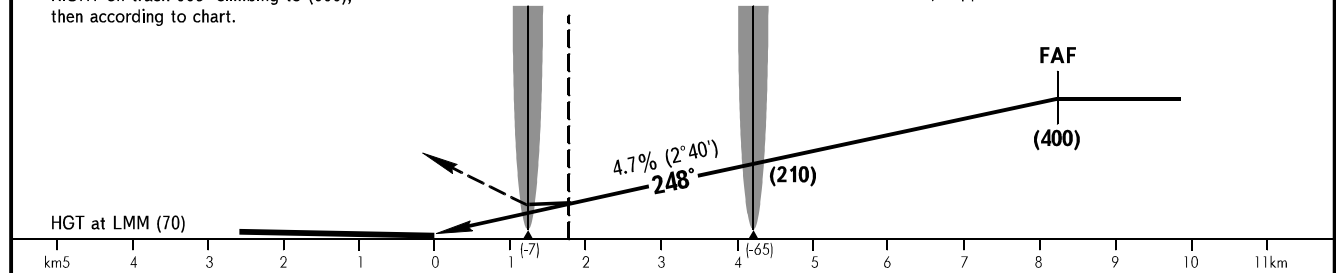
STAVROPOL, RUSSIA
SHPAKOVSKOYE
2 NDB, NDB RWY 25



Alt set: -mm(hPa on req);
-QFE(QNH on req).
BEARINGS AND TRACKS ARE MAG.
ELEV, HGT, ALT IN METRES
DISTANCES ARE IN KILOMETRES

MISSED APPROACH
Climb on track 248° to (200), then turn
RIGHT on track 068° climbing to (600),
then according to chart.

2 NDB and NDB approach: FAF by TAR azimuth 069° MAG,
DIST 9.8. (Terminal area surveillance radar 45 06 38N
042 06 32E). Approach-to-land shall be under control of SRE.



OCA/H		A	B	C	D	
Straight-in Approach	2 NDB	With FAF	529(92)	529(92)	529(92)	529(92)
		WO FAF	529(92)	529(92)	529(92)	529(92)
	NDB (LOM)	With FAF	529(92)	529(92)	529(92)	529(92)
		WO FAF	529(92)	529(92)	529(92)	529(92)

GROUND SPEED	km/h	150	180	210	240	270	300	330	360	390	420	450
LOM-THR 4200m	min:sec	1.40	1.24	1.12	1.03	0.56	0.50	0.46	0.42	0.39	0.36	0.34
RATE OF DESCENT	m/s	2.0	2.3	2.7	3.1	3.5	3.9	4.2	4.6	5.0	5.4	5.8