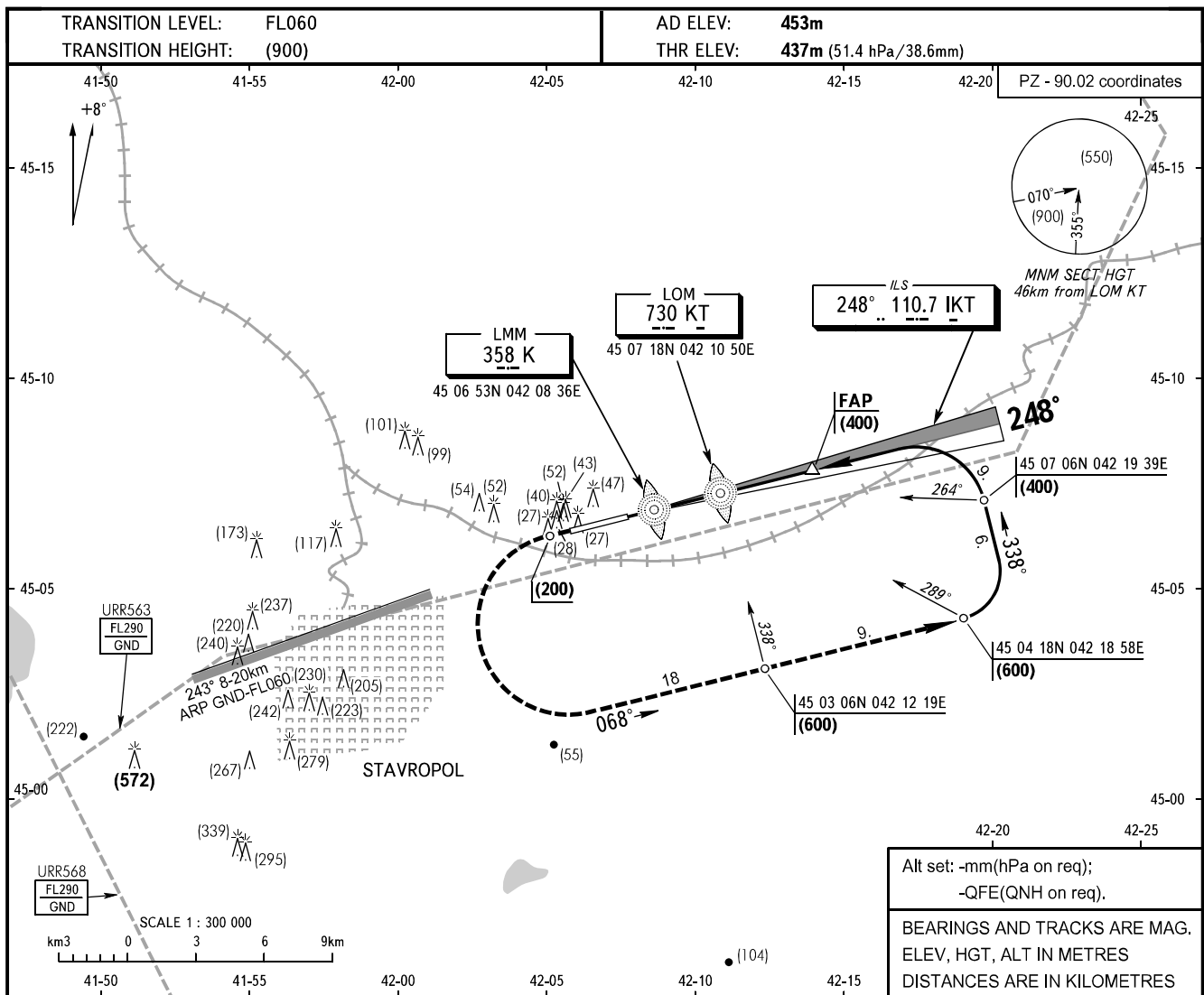


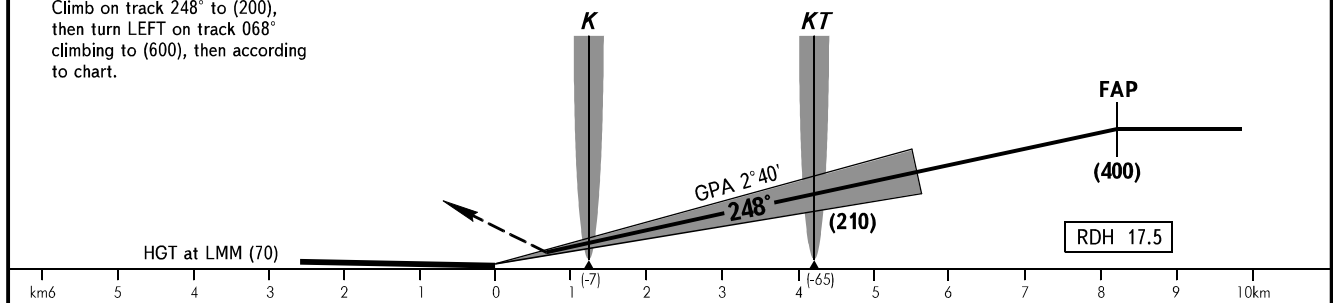
**INSTRUMENT
APPROACH
CHART - ICAO**

TOWER	120.900
-------	----------------

STAVROPOL, RUSSIA
SHPAKOVSKOYE
ILS RWY 25



MISSED APPROACH
Climb on track 248° to (200),
then turn LEFT on track 068°
climbing to (600), then according
to chart.



OCA/H		A	B	C	D								
Straight-in	CAT I	480(43)	482(45)	485(48)	488(51)								
	Approach												
GROUND SPEED		km/h	150	180	210	240	270	300	330	360	390	420	450
LOM-THR 4200m		min:sec	1.40	1.24	1.12	1.03	0.56	0.50	0.46	0.42	0.39	0.36	0.34
RATE OF DESCENT		m/s	2.0	2.3	2.7	3.1	3.5	3.9	4.2	4.6	5.0	5.4	5.8