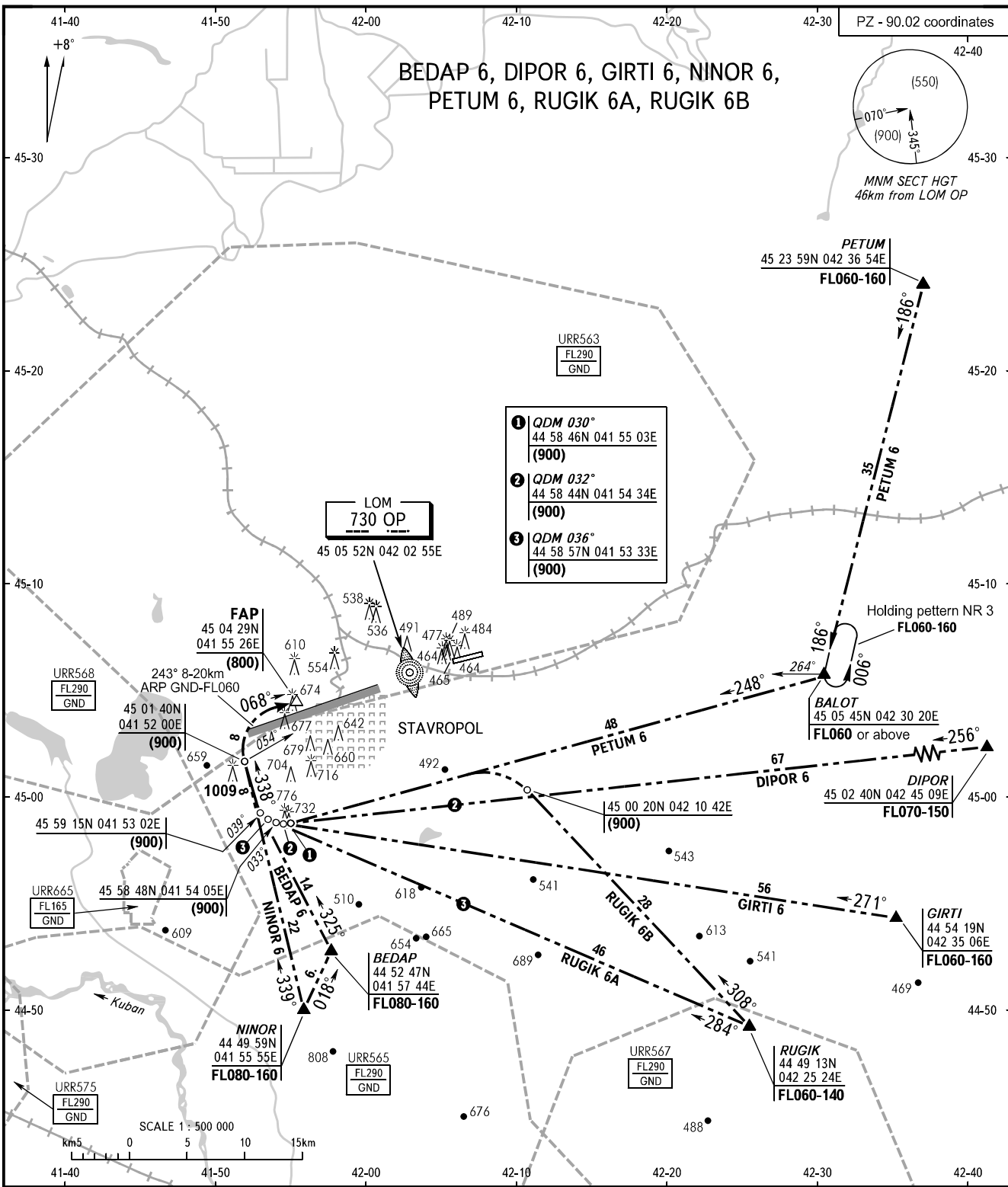


STANDARD ARRIVAL CHART
INSTRUMENT (STAR) - ICAO

TRANSITION
LEVEL : **FL060**

STAVROPOL, RUSSIA
SHPAKOVSKOYE
RWY 07



APPROACH **120.300**

WARNING
Turbulence with downdraughts and wind shear may be expected in the vicinity of base turn and on final.

BEARINGS AND TRACKS ARE MAGNETIC
ALTITUDES, HEIGHTS AND ELEVATIONS ARE IN METRES
DISTANCES ARE IN KILOMETRES

CHANGE: New chart