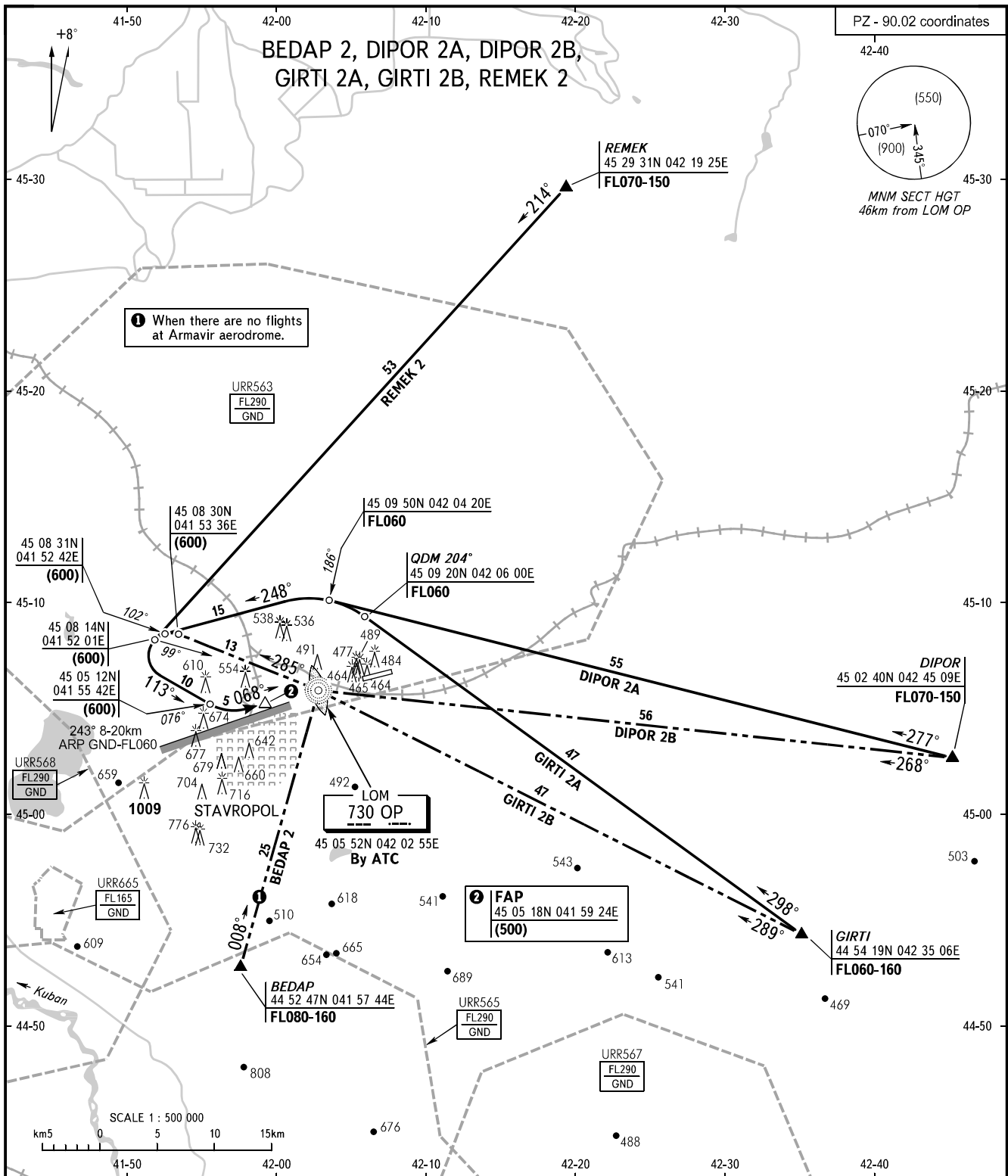


STANDARD ARRIVAL CHART  
INSTRUMENT (STAR) - ICAO

TRANSITION  
LEVEL : FL060

STAVROPOL, RUSSIA  
SHPAKOVSKOYE  
RWY 07



APPROACH 120.300

**WARNING**  
Turbulence with downdraughts and windshear may be expected in the vicinity of base turn.

BEARINGS AND TRACKS ARE MAGNETIC  
ALTITUDES, HEIGHTS AND ELEVATIONS ARE IN METRES  
DISTANCES ARE IN KILOMETRES