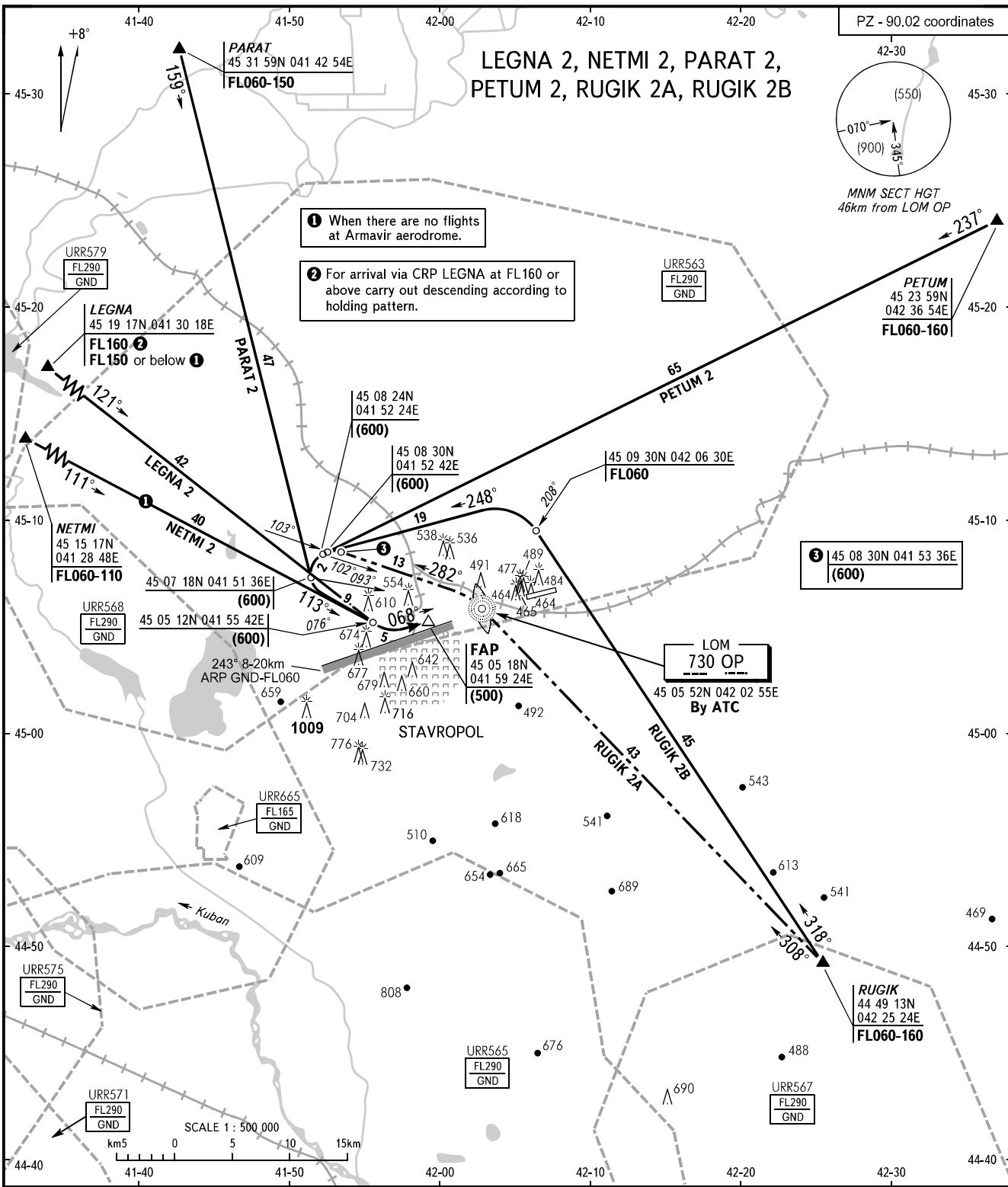


STANDARD ARRIVAL CHART  
INSTRUMENT (STAR) - ICAO

TRANSITION  
LEVEL : **FL060**

STAVROPOL, RUSSIA  
SHPAKOVSKOYE  
RWY 07



1 When there are no flights at Armavir aerodrome.

2 For arrival via CRP LEGNA at FL160 or above carry out descending according to holding pattern.

3 45 08 30N 041 53 36E (600)

LOM  
730 OP  
By ATC

APPROACH 120.300

**WARNING**  
Turbulence with downdraughts and windshear may be expected in the vicinity of base turn.

BEARINGS AND TRACKS ARE MAGNETIC  
ALTITUDES, HEIGHTS AND ELEVATIONS ARE IN METRES  
DISTANCES ARE IN KILOMETRES

CHANGE: New chart