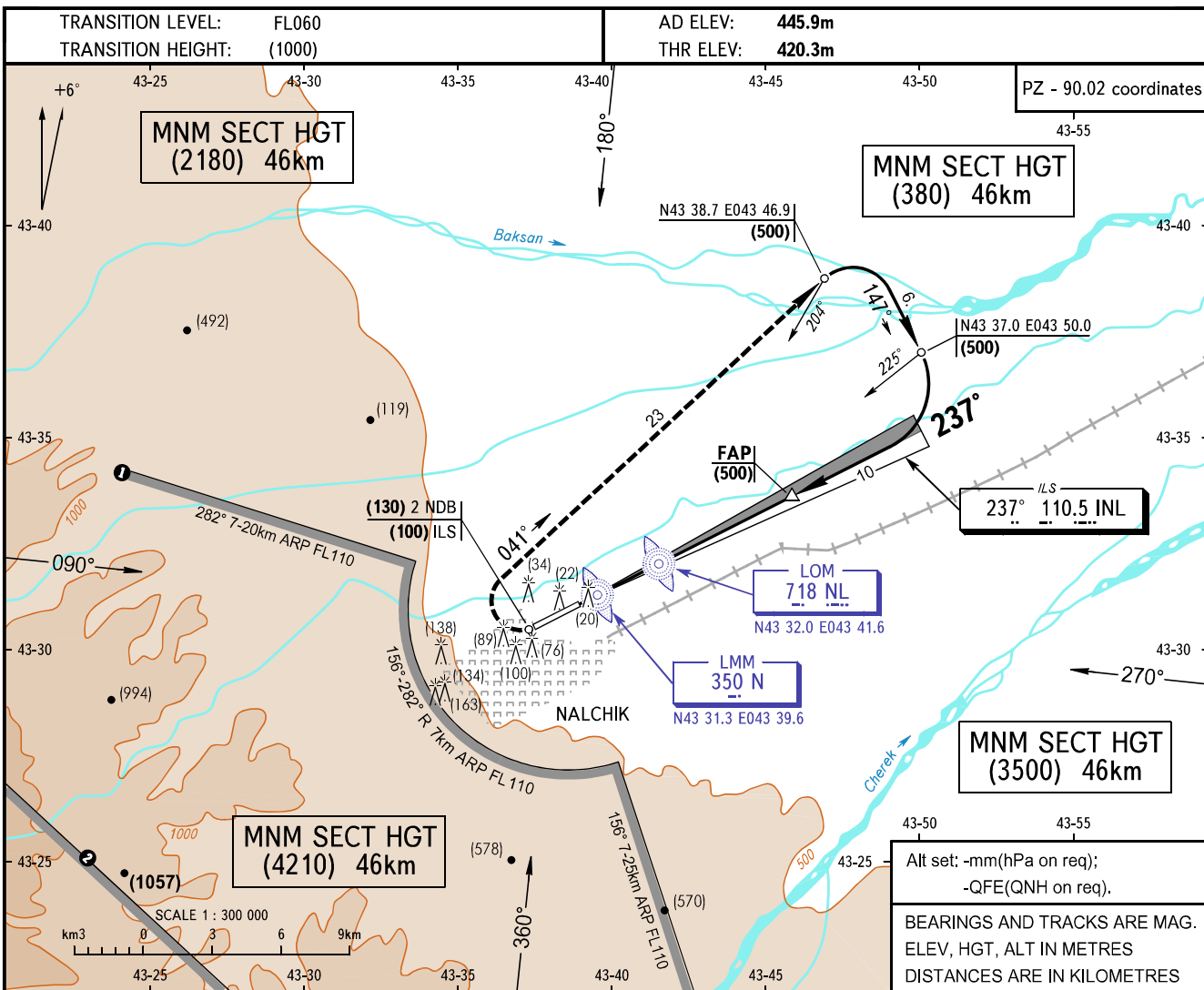


**INSTRUMENT
APPROACH
CHART - ICAO**

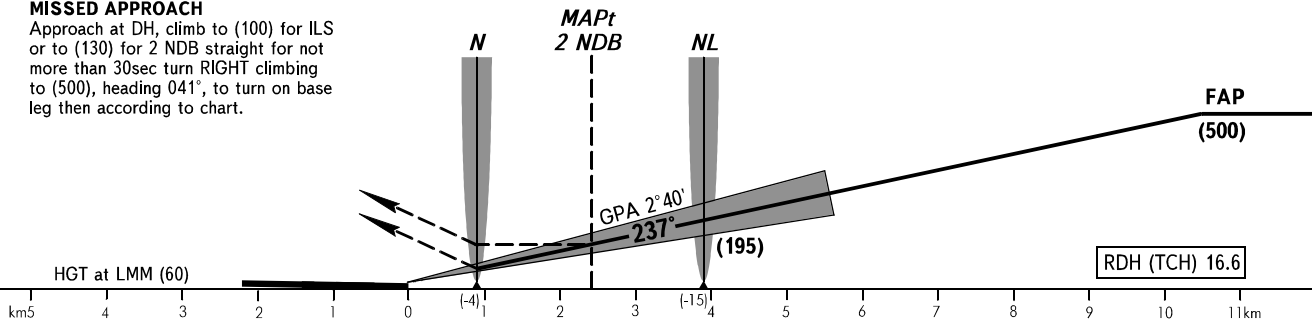
APPROACH
(Additionally serves as RADAR) **126.9**
TOWER **118.3**

NALCHIK, RUSSIA
NALCHIK
ILS, 2 NDB RWY 24



MISSED APPROACH

Approach at DH, climb to (100) for ILS or to (130) for 2 NDB straight for not more than 30sec turn RIGHT climbing to (500), heading 041°, to turn on base leg then according to chart.



OCA/H		A	B	C	D
Straight-in	ILS	470(50)	473(53)	476(56)	479(59)
	2 NDB	548(128)	548(128)	548(128)	548(128)

WARNING:
 1 Line to the south of which IFR flights below FL110 are PROHIBITED.
 2 Line to the south of which IFR flights below FL200 are PROHIBITED.

GROUND SPEED	km/h	150	180	210	240	270	300	330	360	390	420	450
LOM-MAPt 2 NDB 1475m	min:sec	0.35	0.29	0.25	0.22	0.20	0.18	0.17	0.15	0.14	0.13	0.12
RATE OF DESCENT (Grad 4.7%)	m/s	1.9	2.3	2.7	3.1	3.5	3.8	4.2	4.6	5.0	5.4	5.8