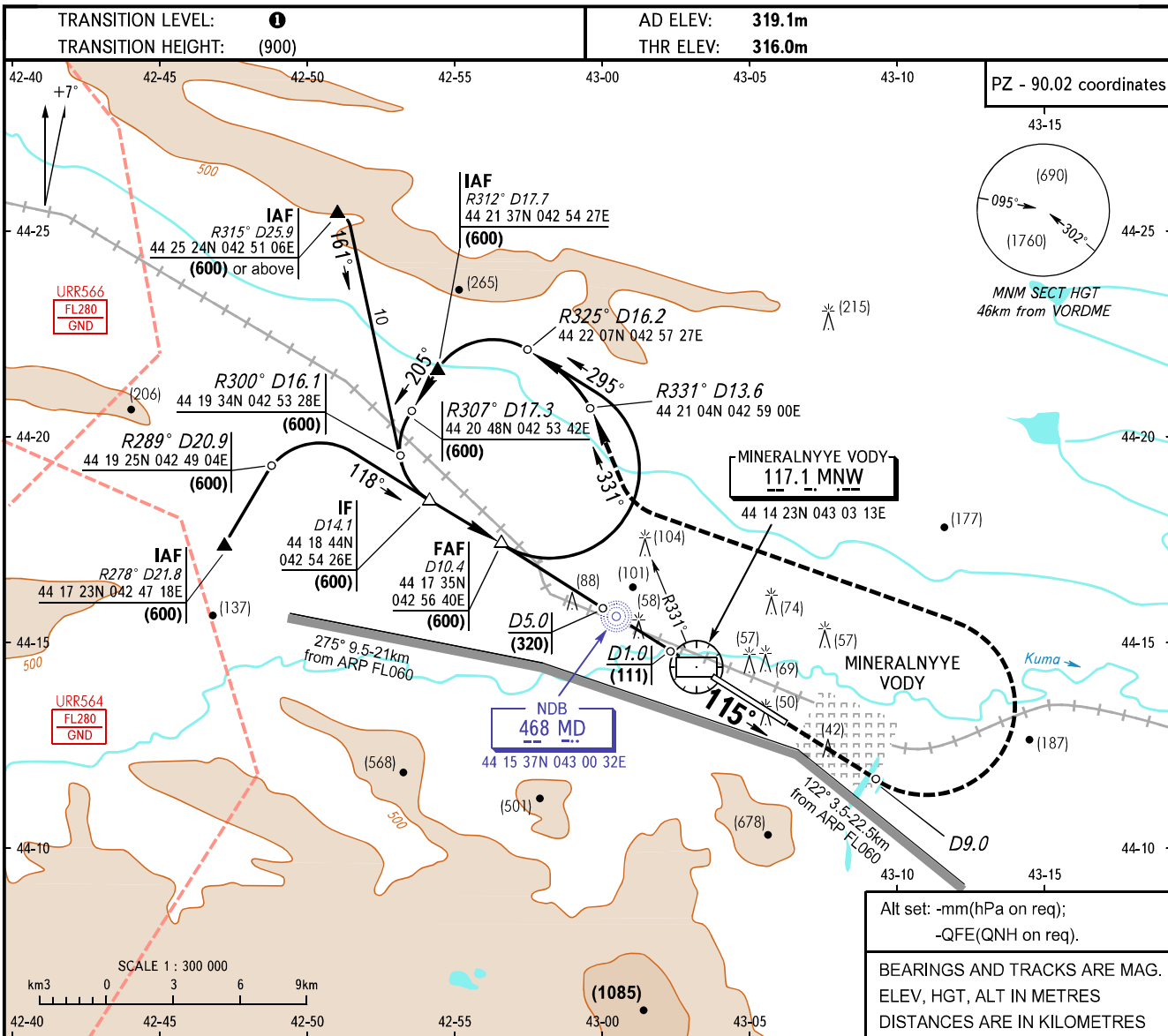


**INSTRUMENT
APPROACH
CHART - ICAO**

APPROACH	119.3
KRUG	120.7
START	128.0

**MINERALNYYE VODY, RUSSIA
MINERALNYYE VODY
VORDME RWY 12**

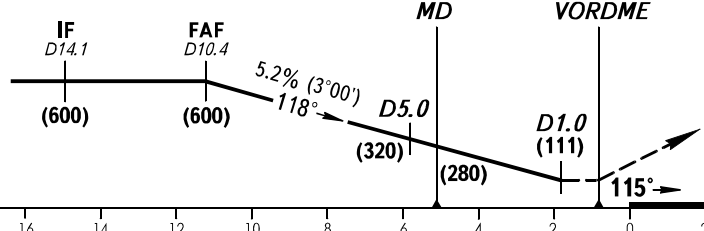


Alt set: -mm(hPa on req);
-QFE(QNH on req).

BEARINGS AND TRACKS ARE MAG.
ELEV, HGT, ALT IN METRES
DISTANCES ARE IN KILOMETRES

FAF is fixed by TAR
13.2km from ARP.

MISSED APPROACH
Climb on track 115° to D9.0 MNW,
then turn LEFT to intercept R331° MNW
climbing to (600), then by ATS unit
instruction.



OCA/H		A	B	C	D
Straight-in Approach	VORDME, VORDME WO FAF	449(133)	449(133)	449(133)	449(133)

1 TRANSITION LEVEL:
- FL060 when atmospheric pressure is
704mm mercury column or above;
- FL070 when atmospheric pressure is
less than 704mm mercury column.

GROUND SPEED	km/h	150	180	210	240	270	300	330	360	390
FAF - THR 11200m	min:sec	4.29	3.44	3.12	2.48	2.29	2.14	2.02	1.52	1.43
RATE OF DESCENT	m/s	2.2	2.6	3.0	3.5	3.9	4.3	4.8	5.2	5.7