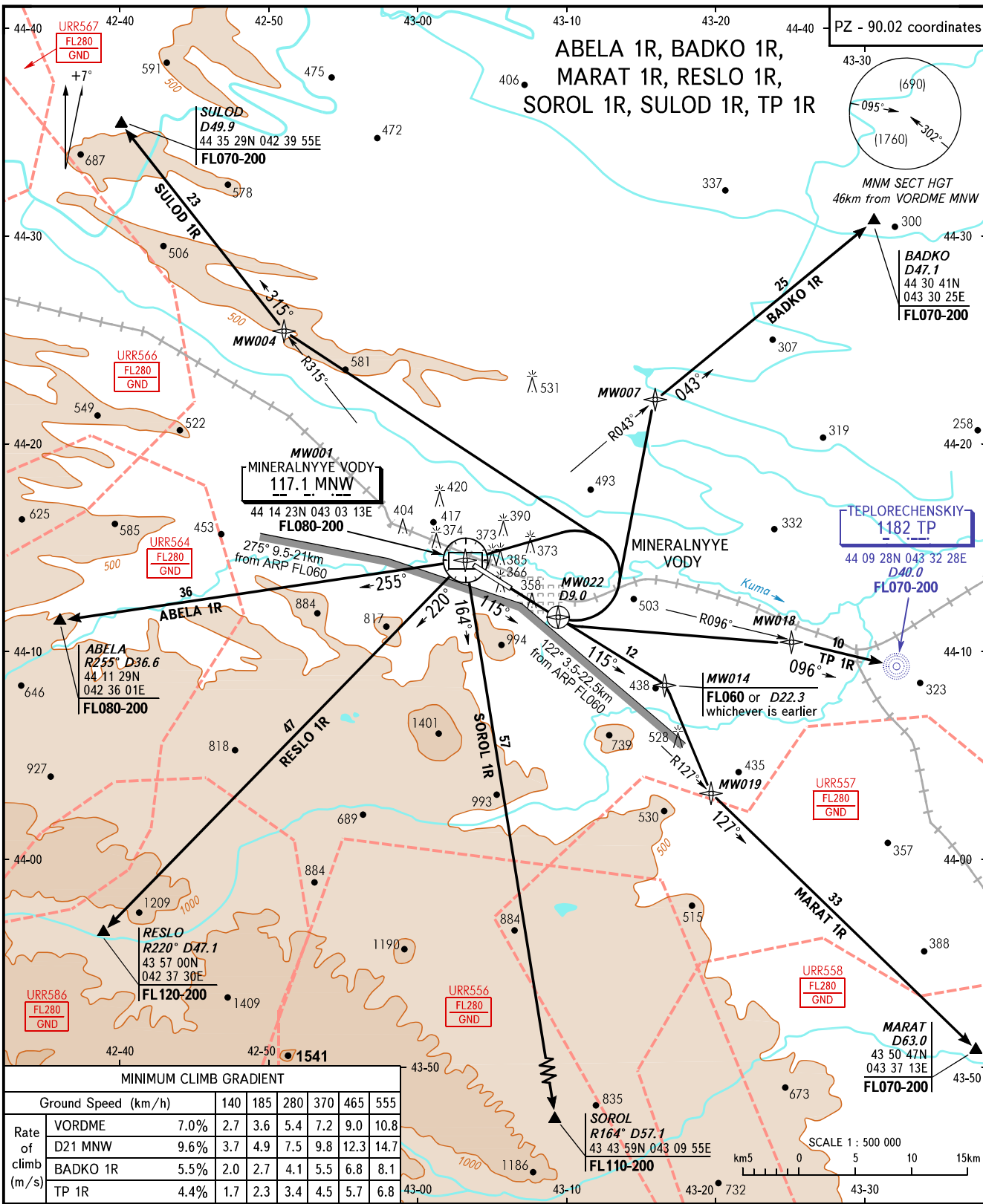


STANDARD DEPARTURE CHART
INSTRUMENT (SID) - ICAO

TRANSITION
HEIGHT : (900)

MINERALNYYE VODY, RUSSIA
MINERALNYYE VODY
RNAV RWY 12



MINIMUM CLIMB GRADIENT							
		140	185	280	370	465	555
Rate of climb (m/s)	VORDME	7.0%	2.7	3.6	5.4	7.2	9.0
	D21 MNW	9.6%	3.7	4.9	7.5	9.8	12.3
	BADKO 1R	5.5%	2.0	2.7	4.1	5.5	6.8
	TP 1R	4.4%	1.7	2.3	3.4	4.5	5.7

START **128.000**
 KRUG **120.700**
 APPROACH **119.300**

BEARINGS AND TRACKS ARE MAGNETIC
 ALTITUDES, HEIGHTS AND ELEVATIONS ARE IN METRES
 DISTANCES ARE IN KILOMETRES

- WARNING:**
1. Take-off shall be carried out using noise abatement procedure for the area according to the Aeroplane Flight Manual.
 2. ACFT unable to maintain the required climb gradient shall advise ATS unit about it and get other instructions.
 3. After climbing to (120) immediately contact Mineralnyye Vody-Krug on 120.700.

CHANGE: MW014 D22.3