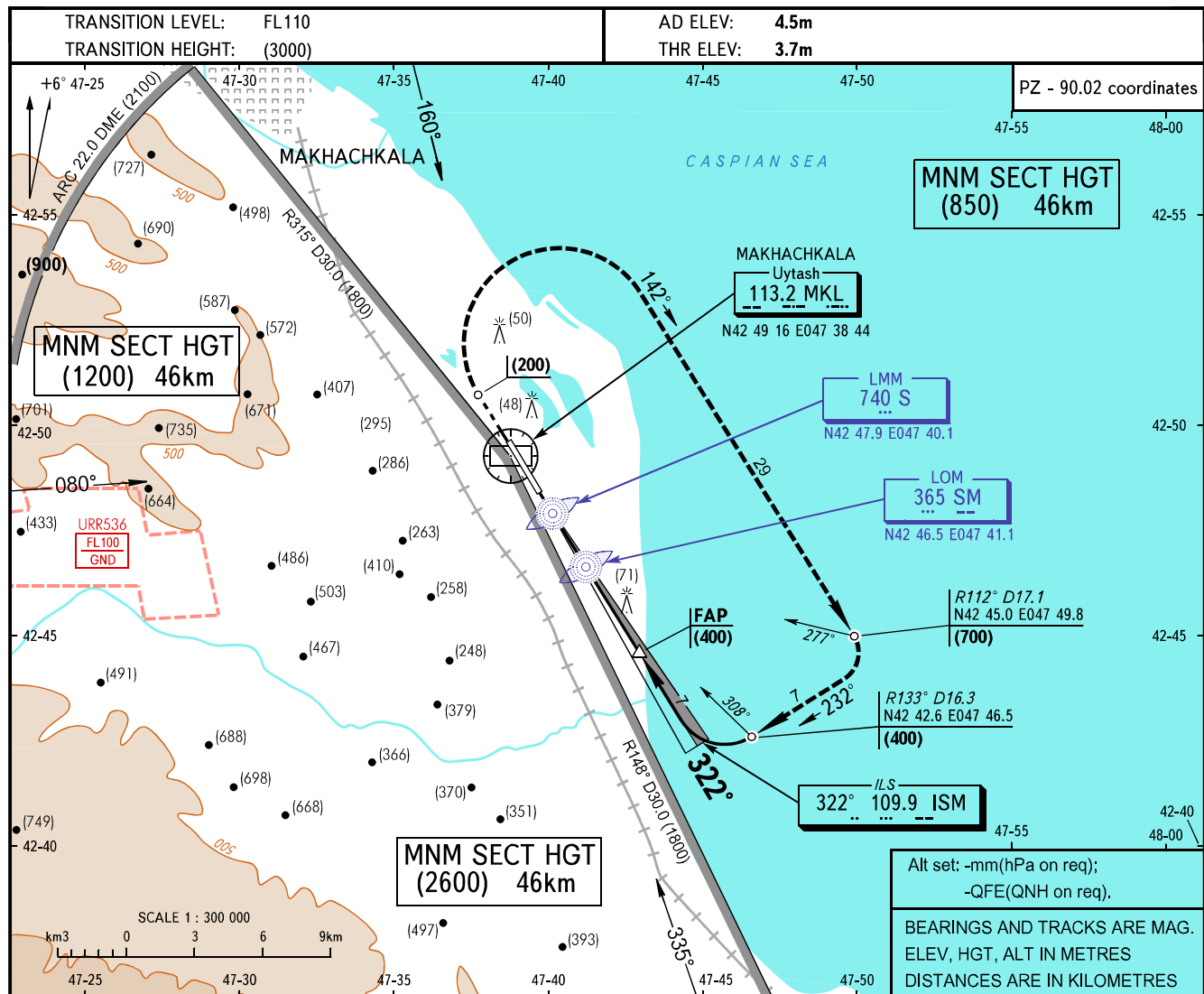


**INSTRUMENT
APPROACH
CHART - ICAO**

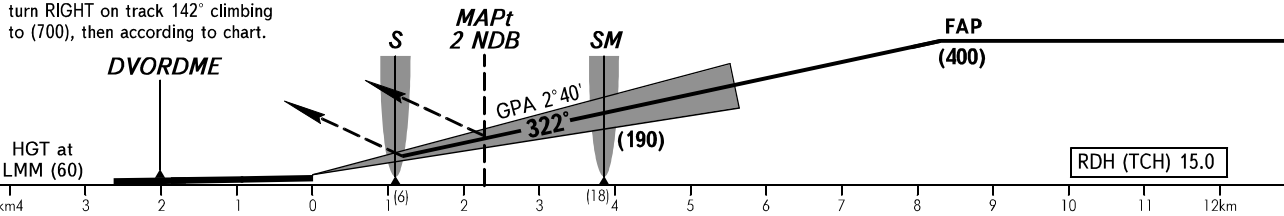
APPROACH	119.7
KRUG	121.3
TOWER	121.3

MAKHACHKALA, RUSSIA
UYTASH
ILS, 2 NDB RWY 32



MISSED APPROACH

Climb on track 322° to (200), then turn RIGHT on track 142° climbing to (700), then according to chart.



OCA/H		A	B	C	D
Straight-in	ILS	64(60)	60(60)	74(70)	74(70)
	2 NDB	104(100)	104(100)	104(100)	124(120)
Circle-to-land	MDA/H	164(160)	164(160)	204(200)	214(210)
	CLD base, m	300	300	350	350
	VIS, m	1600 / 5000*	2500 / 5000*	3000 / 7000*	4000 / 7000*
Circling radius		4900	4900	7850	9790

WARNING:

- Approach shall be carried out under radar control only.
- FAF location is R141° D10.3km by VORDME.
- There are mobile rigs 43-65m high AAL at a distance of 1.5-15km from RWY outside obstacle areas for take-off and approach.

NOTE

* For circling-to-land from CRP AGALA.

GROUND SPEED	km/h	150	180	210	240	270	300	330	360	390	420	450
LOM-MAPt 2 NDB 1600m	min:sec	0.38	0.32	0.27	0.24	0.21	0.19	0.17	0.16	0.15	0.14	0.13
RATE OF DESCENT (Grad 4.7%)	m/s	2.0	2.4	2.7	3.1	3.5	3.9	4.3	4.7	5.1	5.5	5.8