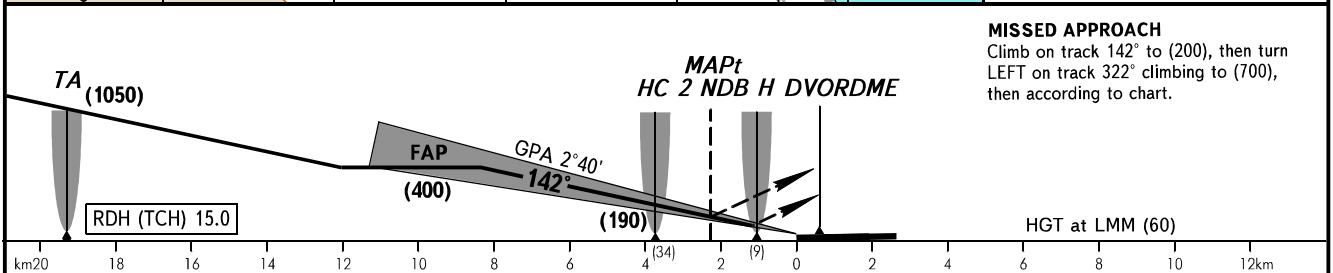
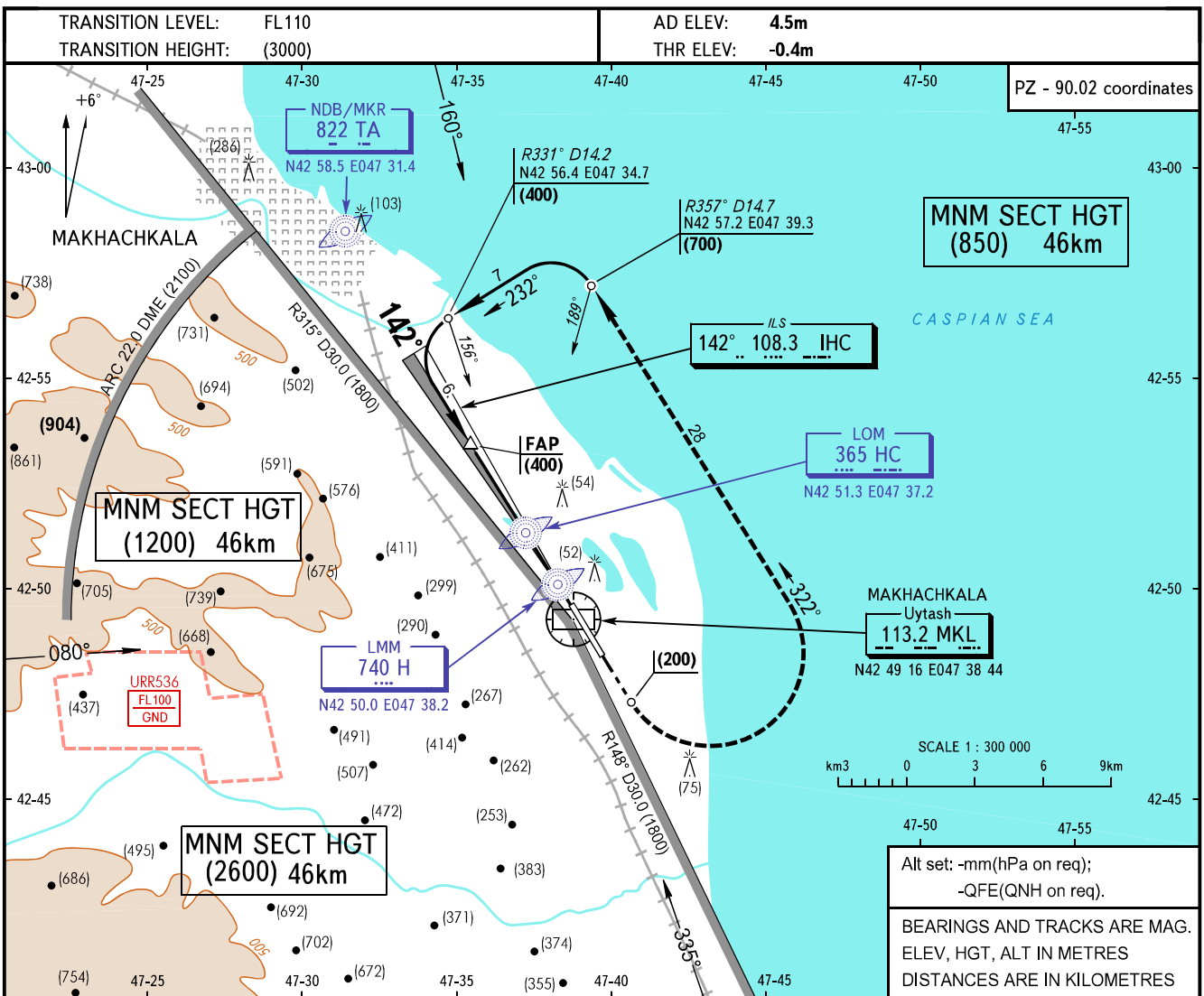


**INSTRUMENT
APPROACH
CHART - ICAO**

MAKHACHKALA, RUSSIA
UYTASH
ILS, 2 NDB RWY 14

APPROACH	119.7
KRUG	121.3
TOWER	121.3



OCA/H		A	B	C	D
Straight-in Approach	ILS	60(60)	60(60)	70(70)	70(70)
	2 NDB	100(100)	100(100)	100(100)	120(120)
Circle-to-land	MDA/H	160(160)	160(160)	200(200)	210(210)
	CLD base, m	300	300	350	350
	VIS, m	1600 / 5000*	2500 / 5000*	3000 / 7000*	4000 / 7000*
	Circling radius	4900	4900	7850	9790

WARNING:
1. Approach shall be carried out under radar control only.
2. FAF location is R323° D8.9km by VORDME.
3. There are mobile rigs 43-65m high AAL at a distance of 1.5-15km from RWY outside obstacle areas for take-off and approach.

NOTE
* For circling-to-land from CRP AGALA.

GROUND SPEED	km/h	150	180	210	240	270	300	330	360	390	420	450
LOM-MAPt 2 NDB 1470m	min:sec	0.35	0.29	0.25	0.22	0.20	0.18	0.16	0.15	0.14	0.13	0.12
RATE OF DESCENT (Grad 4.7%)	m/s	2.0	2.4	2.7	3.1	3.5	3.9	4.3	4.7	5.1	5.5	5.8

CHANGE: New chart