

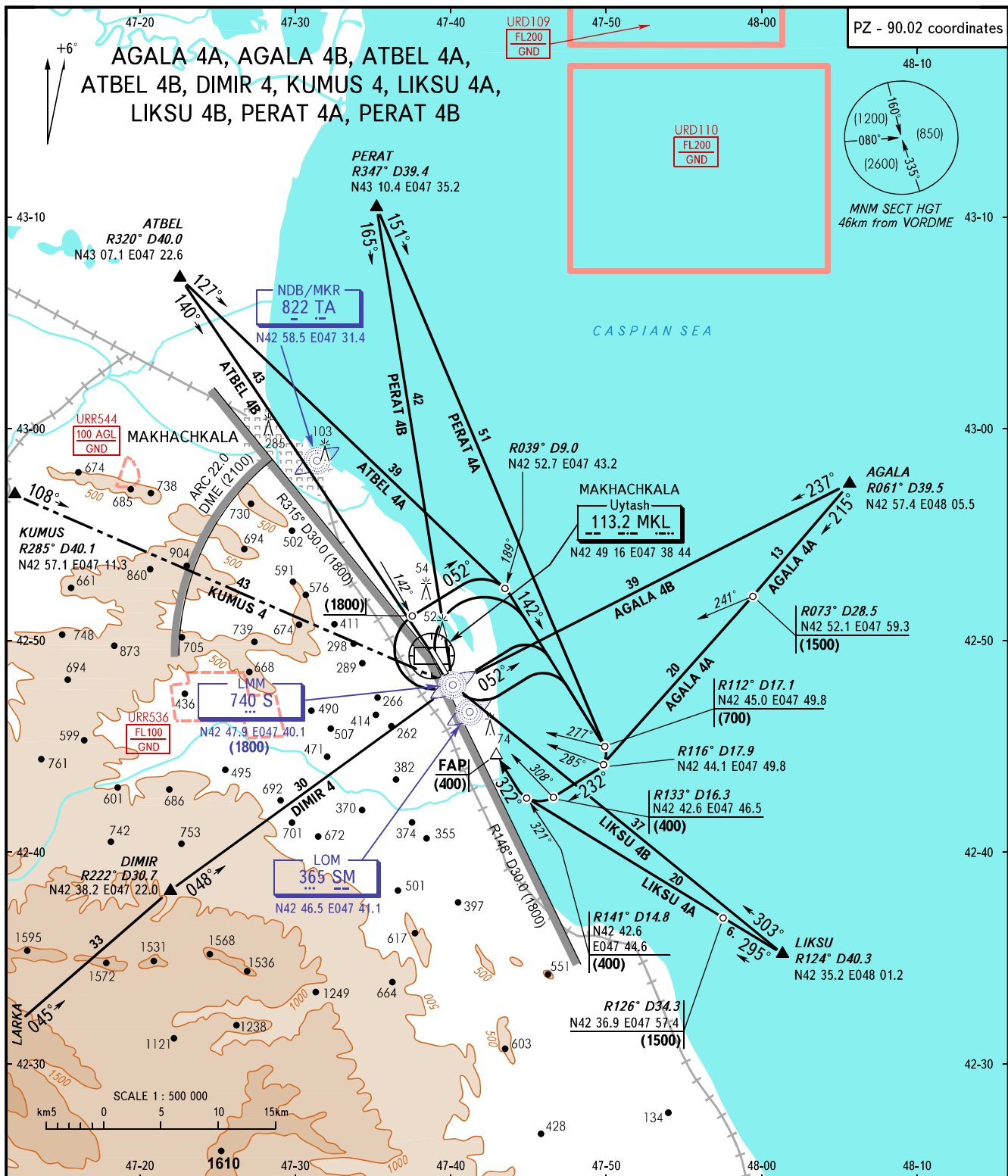
STANDARD ARRIVAL CHART
INSTRUMENT (STAR) - ICAO

TRANSITION
LEVEL : **FL110**

MAKHACHKALA, RUSSIA

UYTASH

RWY 32



APPROACH	119.7
KRUG	121.3
TOWER	121.3

WARNING:

1. Flight from CRP LARKA, KUMUS is allowed under continuous radar control and steady operation of airborne navigation facilities.
2. Crossing altitudes for exit points of AWY are as directed by ATC.

BEARINGS AND TRACKS ARE MAGNETIC
 ALTITUDES, HEIGHTS AND ELEVATIONS ARE IN METRES
 DISTANCES ARE IN KILOMETRES