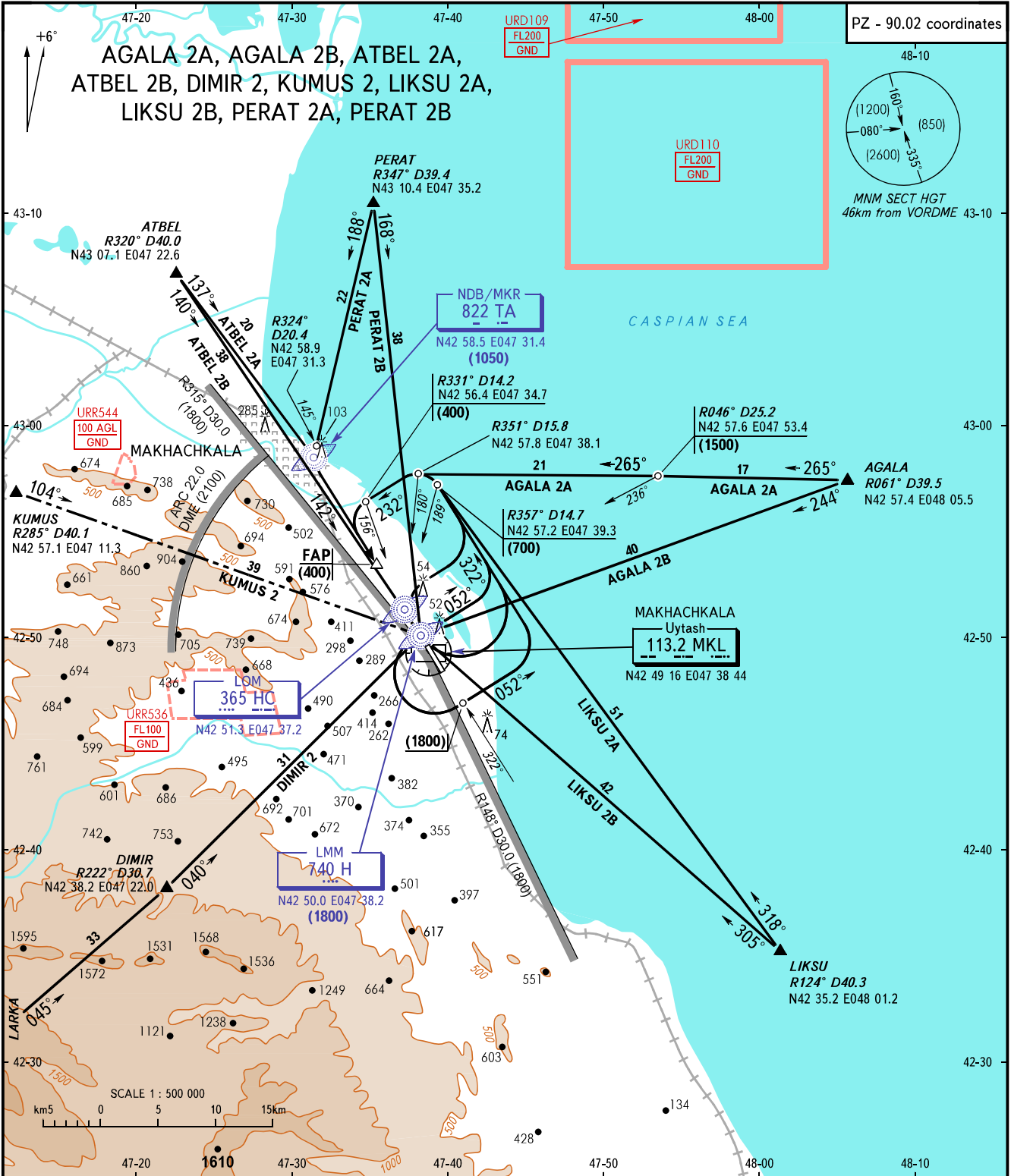


STANDARD ARRIVAL CHART
INSTRUMENT (STAR) - ICAO

TRANSITION
LEVEL : **FL110**

MAKHACHKALA, RUSSIA
UYTASH
RWY 14



APPROACH **119.7**
KRUG **121.3**
TOWER **121.3**

- WARNING:**
1. When signalling of crossing NDB/MKR 822 TA is absent, further descent is prohibited, proceed to LMM at HGT (1800).
 2. Flight from CRP LARKA, KUMUS is allowed under continuous radar control and steady operation of airborne navigation facilities.
 3. Crossing altitudes for exit points of AWY are as directed by ATC.

BEARINGS AND TRACKS ARE MAGNETIC
ALTITUDES, HEIGHTS AND ELEVATIONS ARE IN METRES
DISTANCES ARE IN KILOMETRES

CHANGE: TL, STAR KUMUS 2