

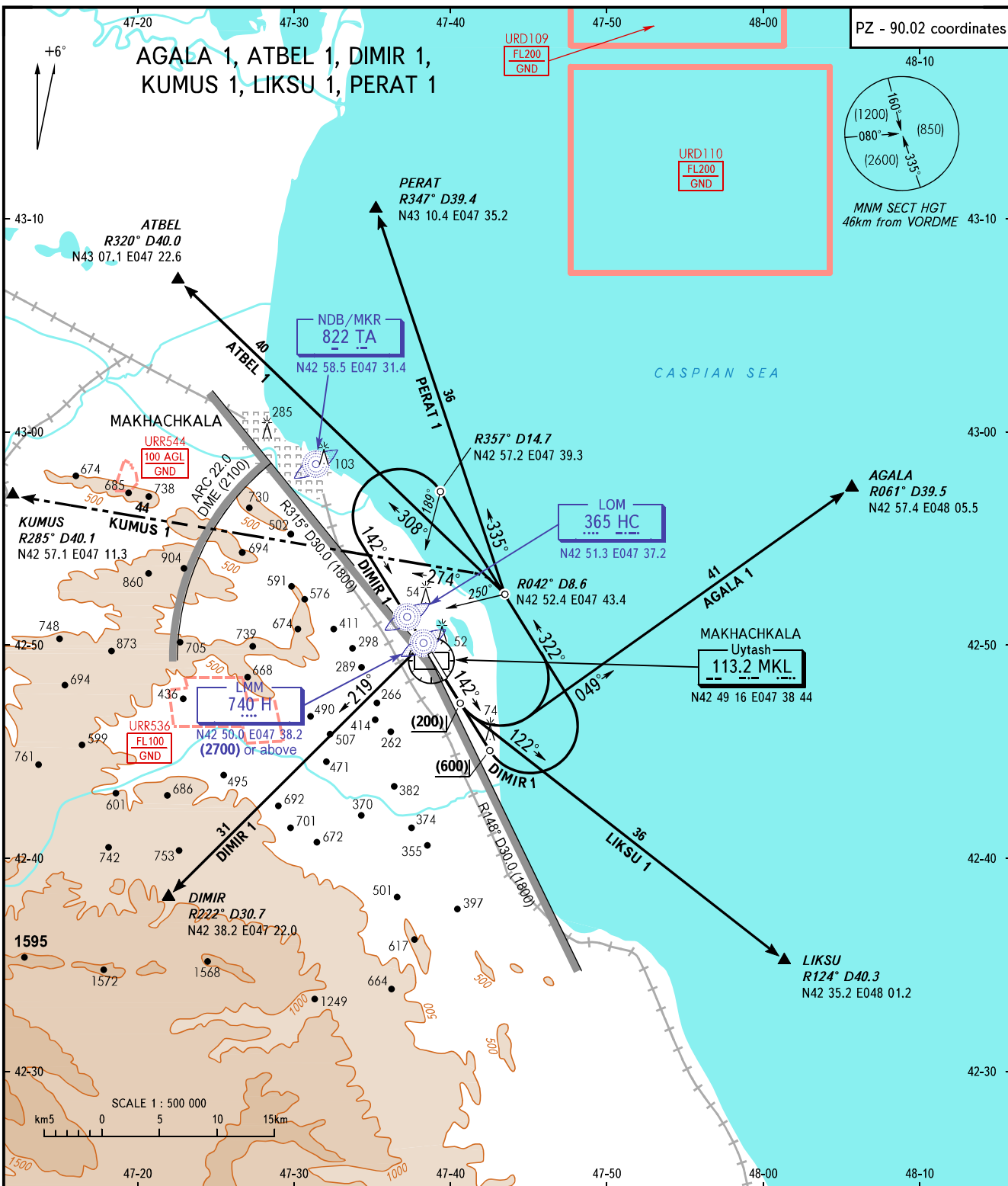
STANDARD DEPARTURE CHART  
INSTRUMENT (SID) - ICAO

TRANSITION  
HEIGHT : (3000)

MAKHACHKALA, RUSSIA

UYTASH

RWY 14



START	121.3
KRUG	121.3
APPROACH	119.7

- WARNING:**
1. Proceed to CRP DIMIR after climbing straight ahead to (600), turn LEFT onto track 322° and then according to the approach pattern climbing to LMM. Proceed from LMM at not below (2700).
  2. Flight to CRP DIMIR, KUMUS is allowed under continuous radar control and steady operation of airborne navigation facilities.
  3. Crossing altitudes for entry points of AWY are as directed by ATS unit.

BEARINGS AND TRACKS ARE MAGNETIC  
ALTITUDES, HEIGHTS AND ELEVATIONS ARE IN METRES  
DISTANCES ARE IN KILOMETRES

CHANGE: SID KUMUS 1, UUR