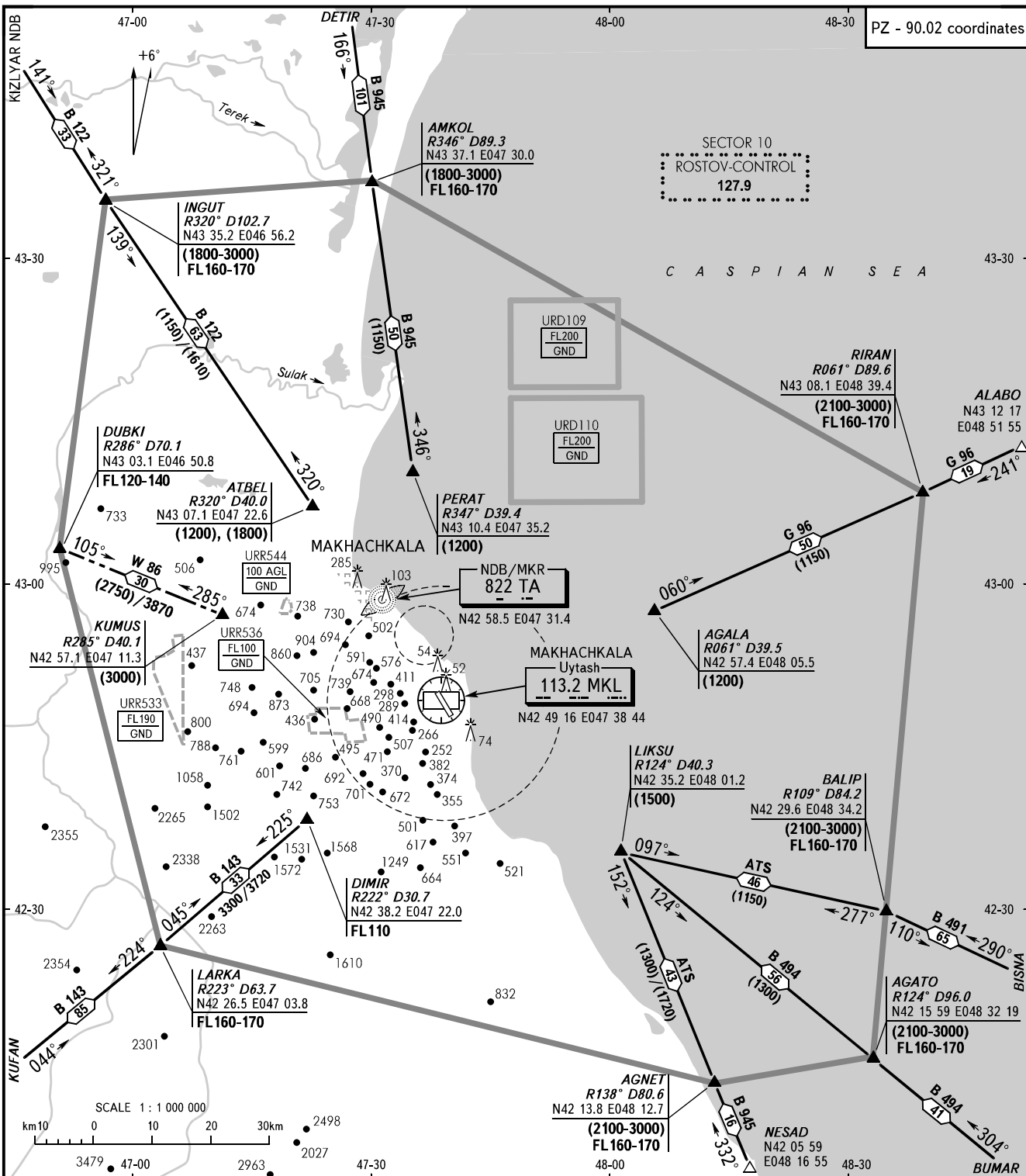


AREA CHART - ICAO

ARRIVAL, DEPARTURE
AND TRANSIT ROUTES

MAKHACHKALA, RUSSIA

UYTASH



WARNING:

- There are mobile rigs 43-65m high AAL at a distance of 1.5-15km from RWY outside obstacle areas for take-off and approach.
- Flight from CRP LARKA, KUMUS is allowed under continuous radar control and steady operation of airborne navigation facilities.

BEARINGS AND TRACKS ARE MAGNETIC
ALTITUDES, HEIGHTS AND ELEVATIONS ARE IN METRES
DISTANCES ARE IN KILOMETRES

CHANGE: CRP DUBKI COORD